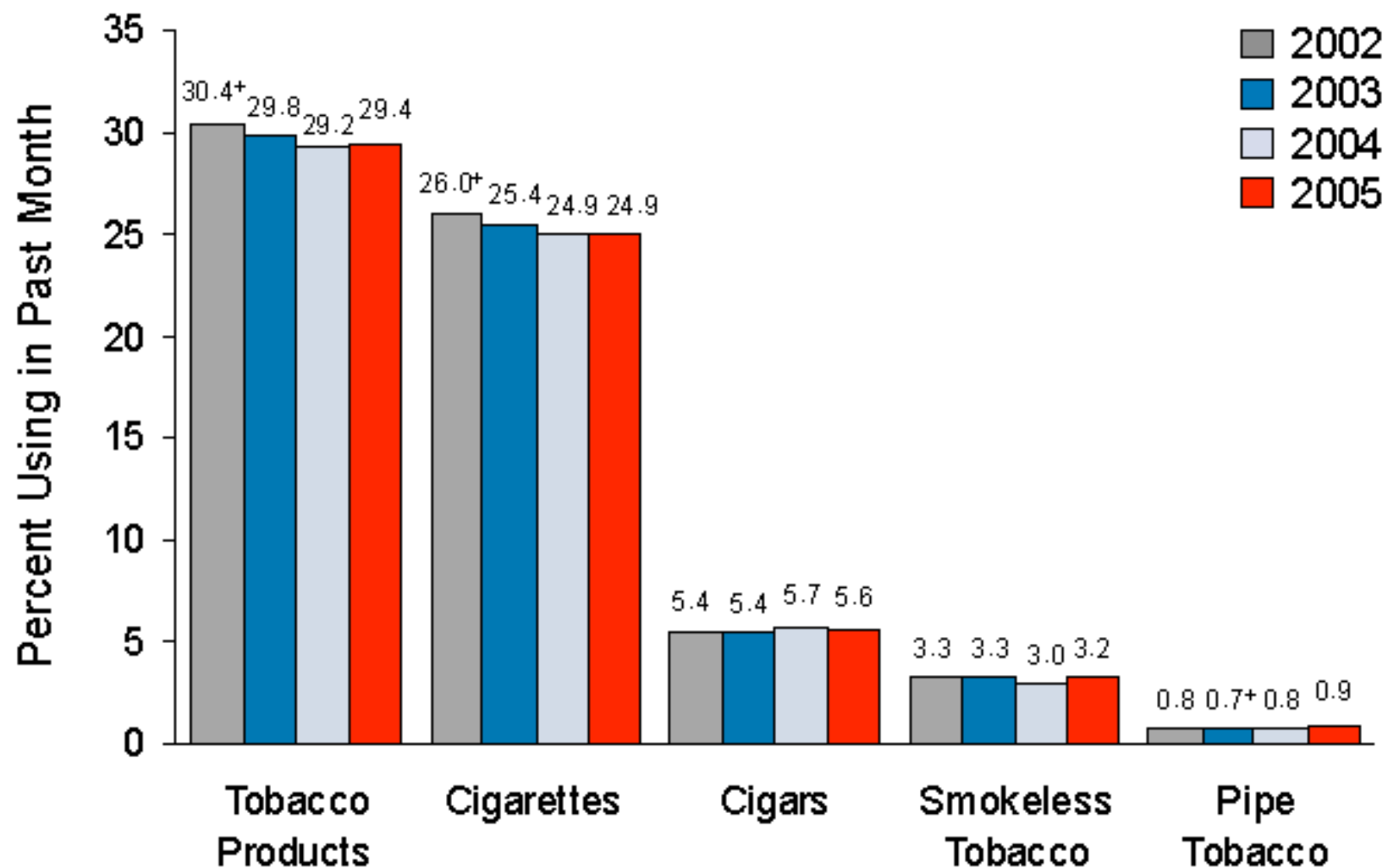
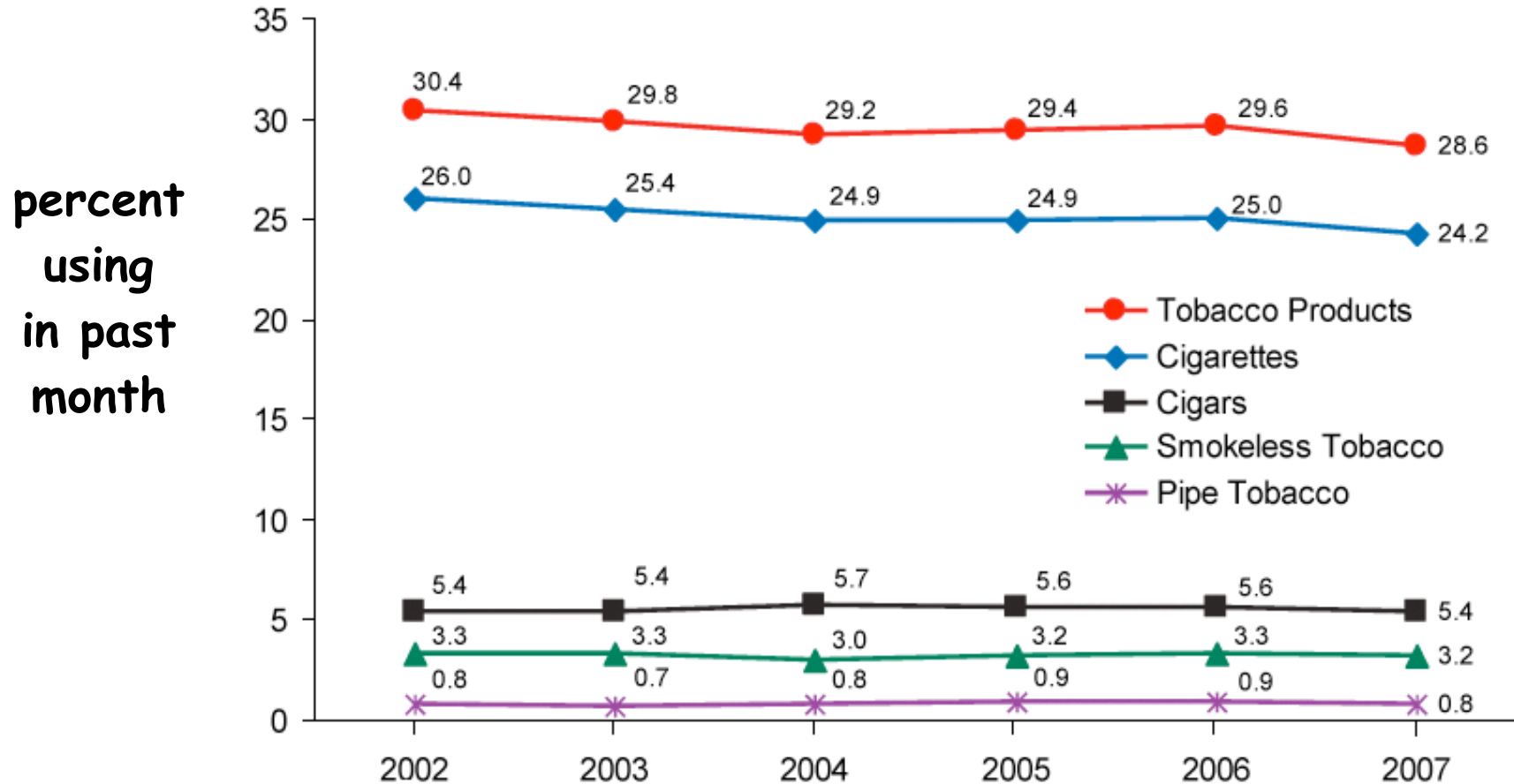


Past month tobacco use among persons age 12 and older 2002-2005

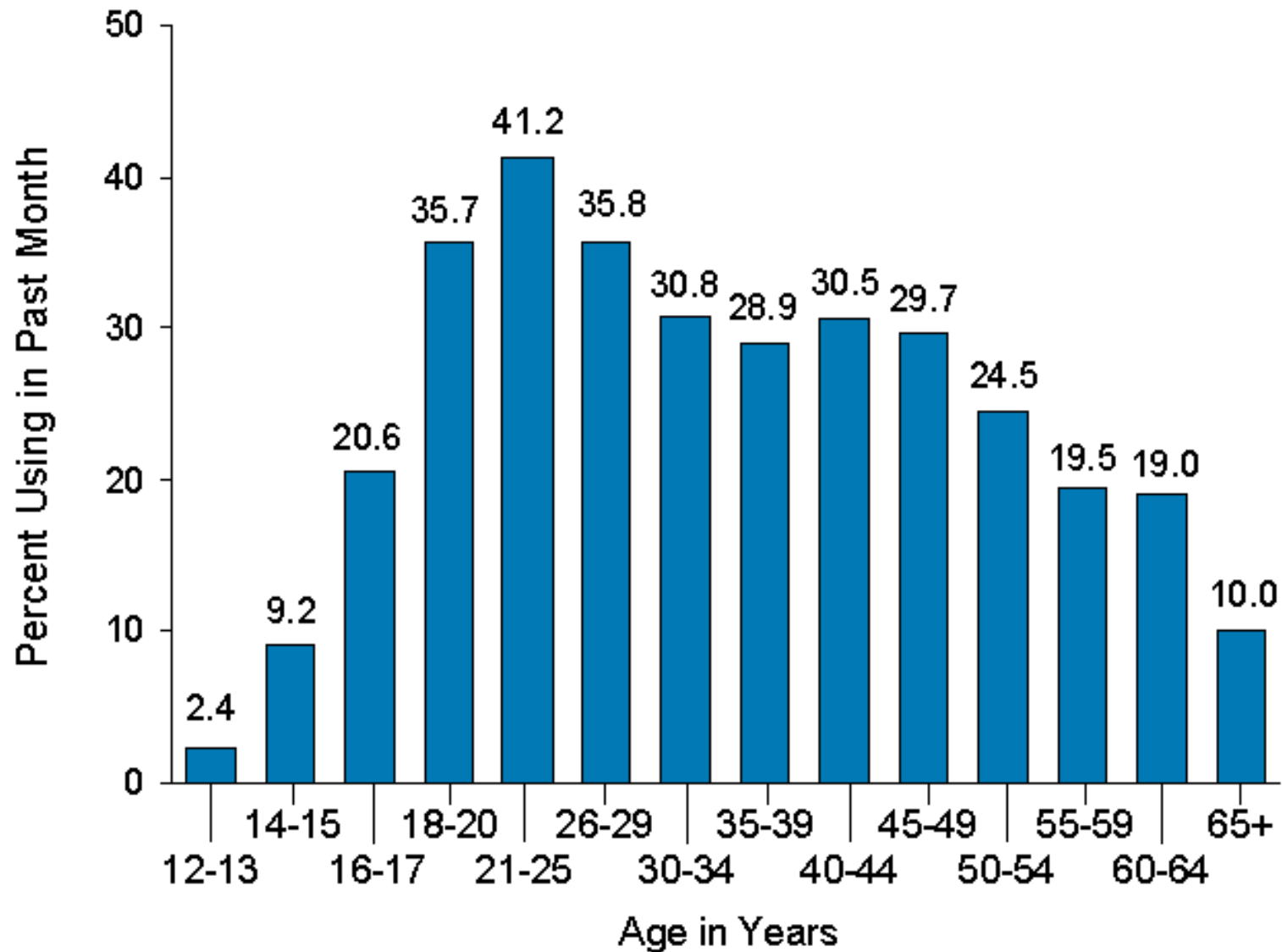


2005 National Survey on Drug Use and Health: www.samhsa.gov

Past month tobacco use among persons age 12 and older 2002-2007

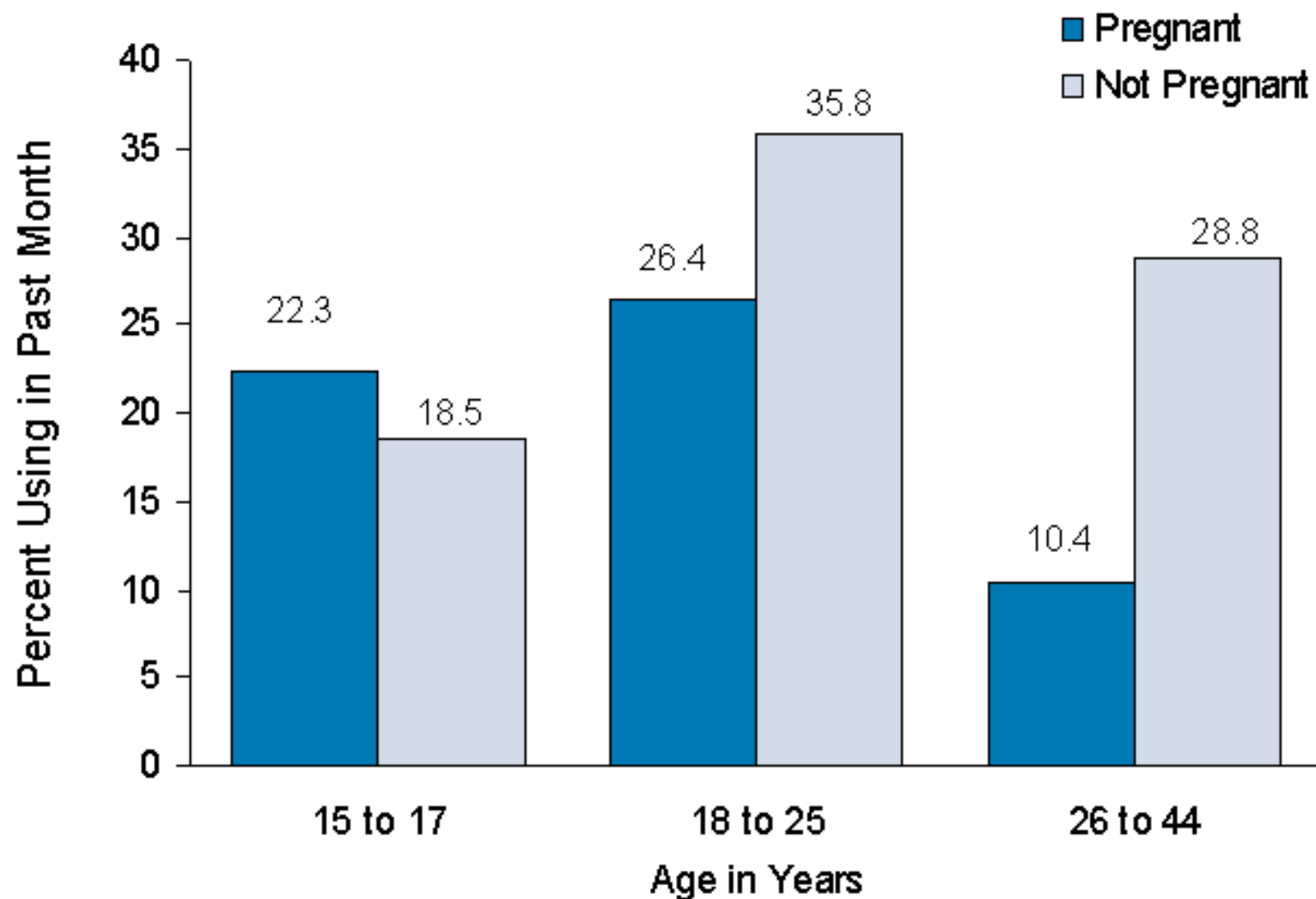


Past month cigarette use, by age - 2005



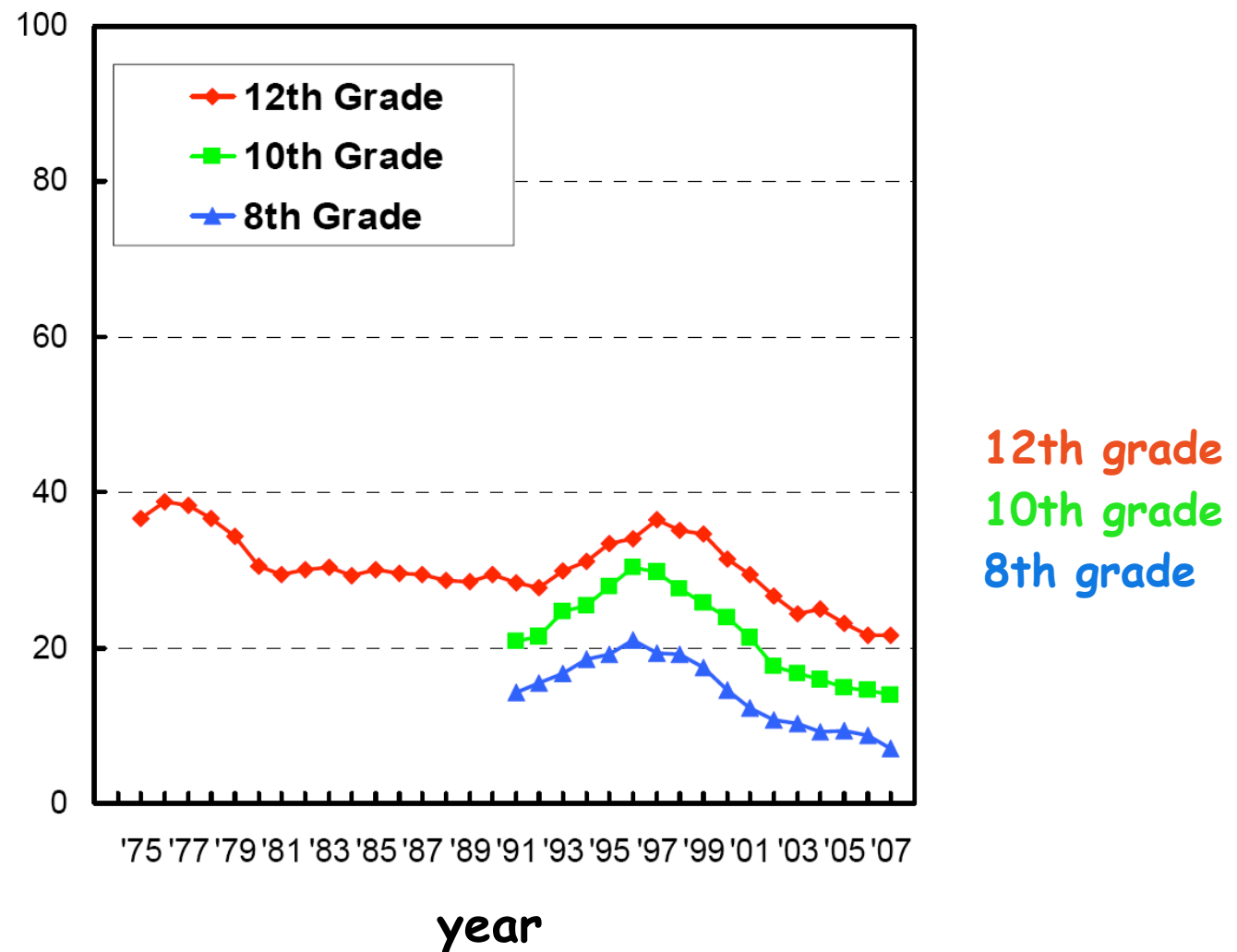
2005 National Survey on Drug Use and Health: www.samhsa.gov

Past month cigarette use among women, ages 15-44
By age and pregnancy status

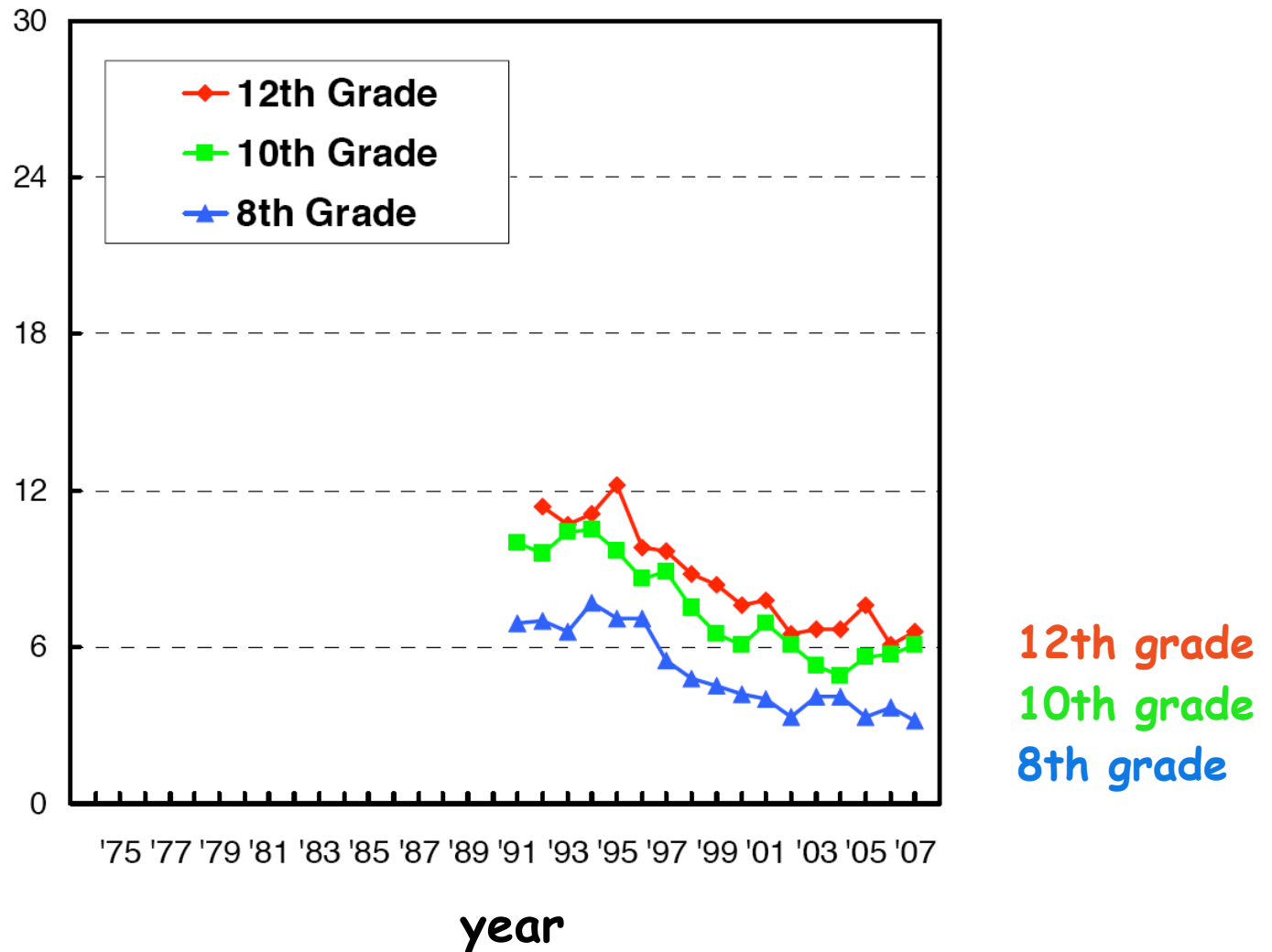


2005 National Survey on Drug Use and Health: www.samhsa.gov

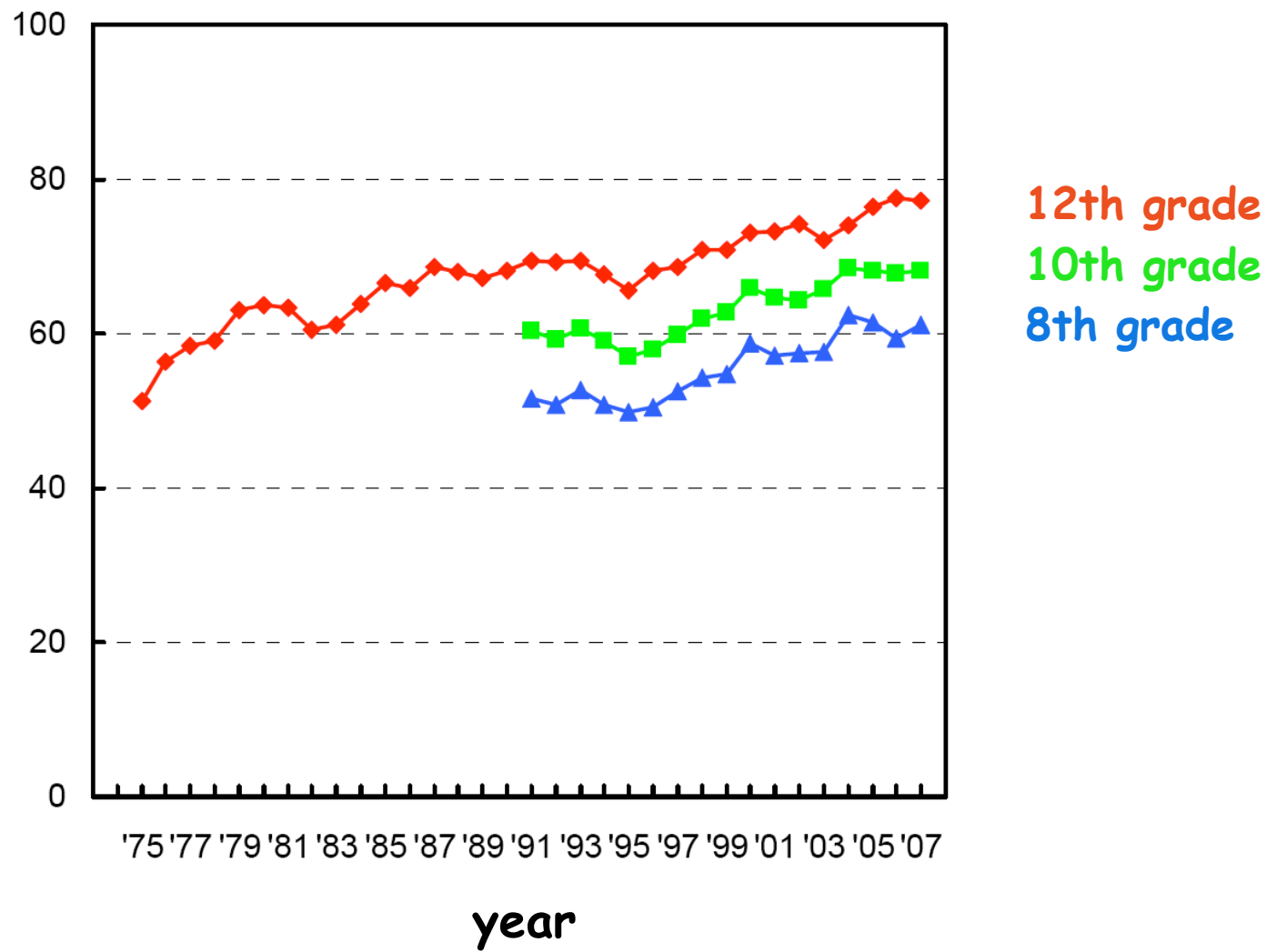
Use Prevalence: % who smoked tobacco cigarettes in the past 30 days



Use Prevalence: % who used smokeless tobacco in the past 30 days

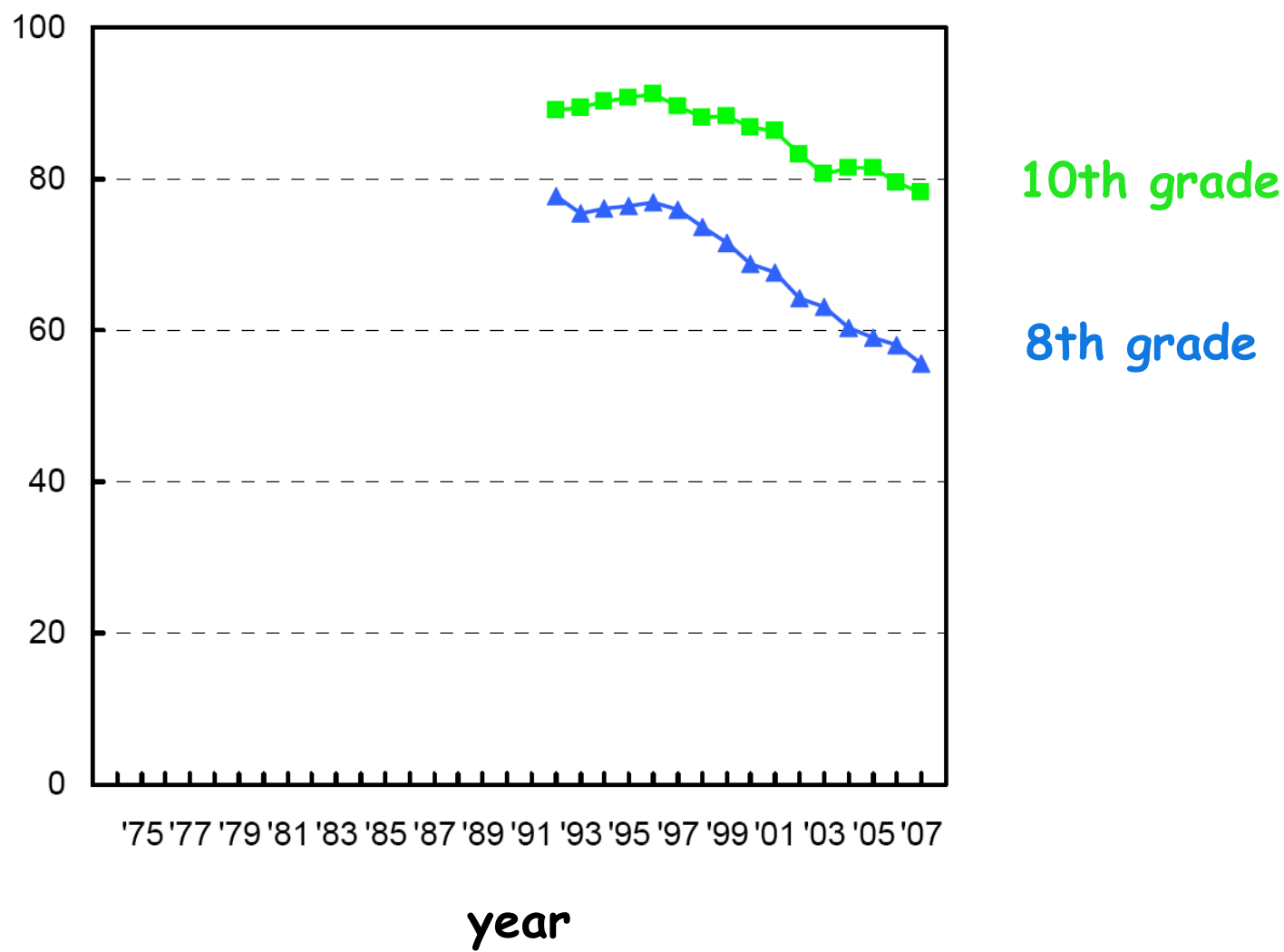


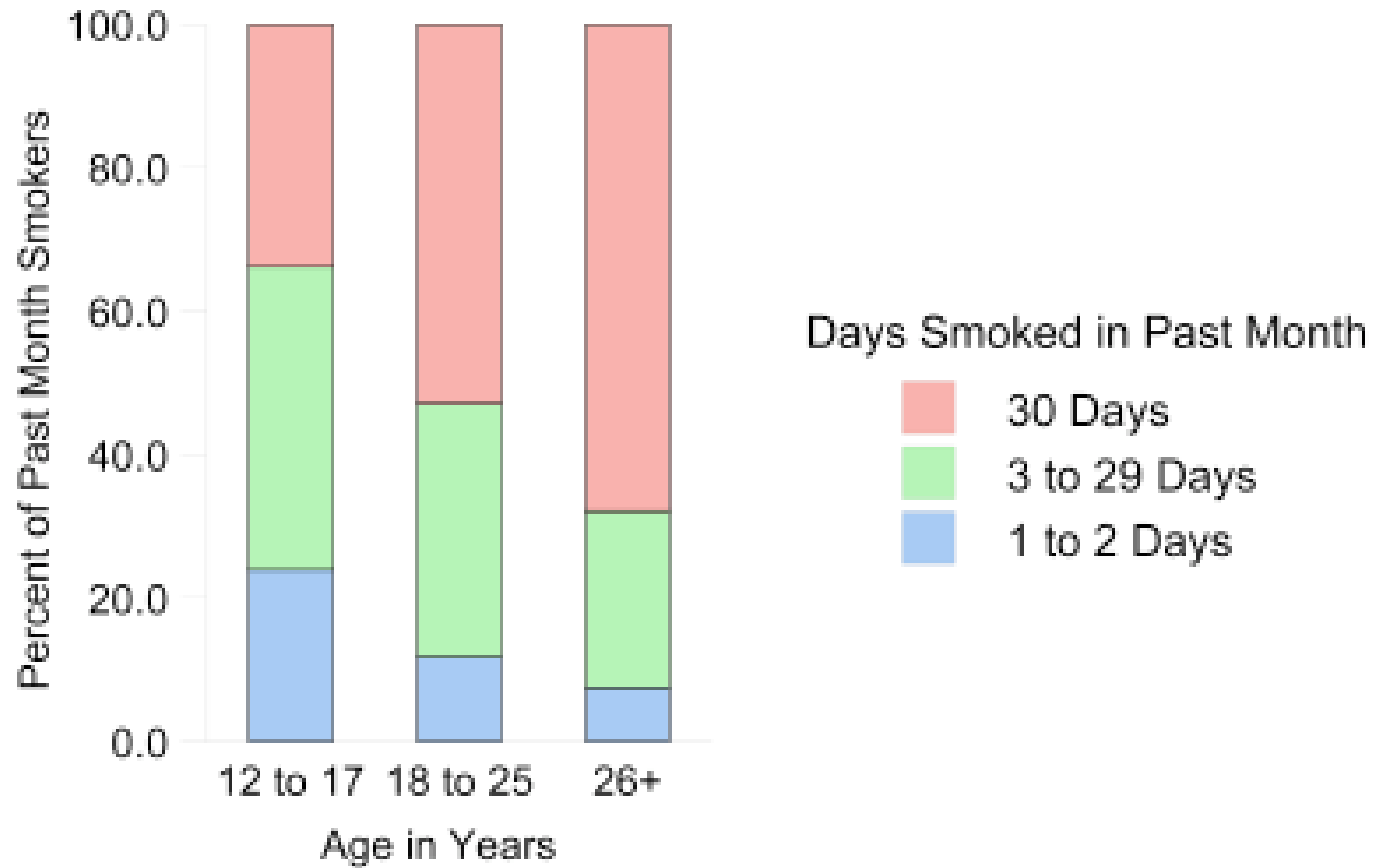
Risk: % seeing "great risk" in smoking a pack or more per day



Cigarette Availability

% saying "fairly easy" or "very easy" to get





National Survey data from 2001: www.samhsa.gov