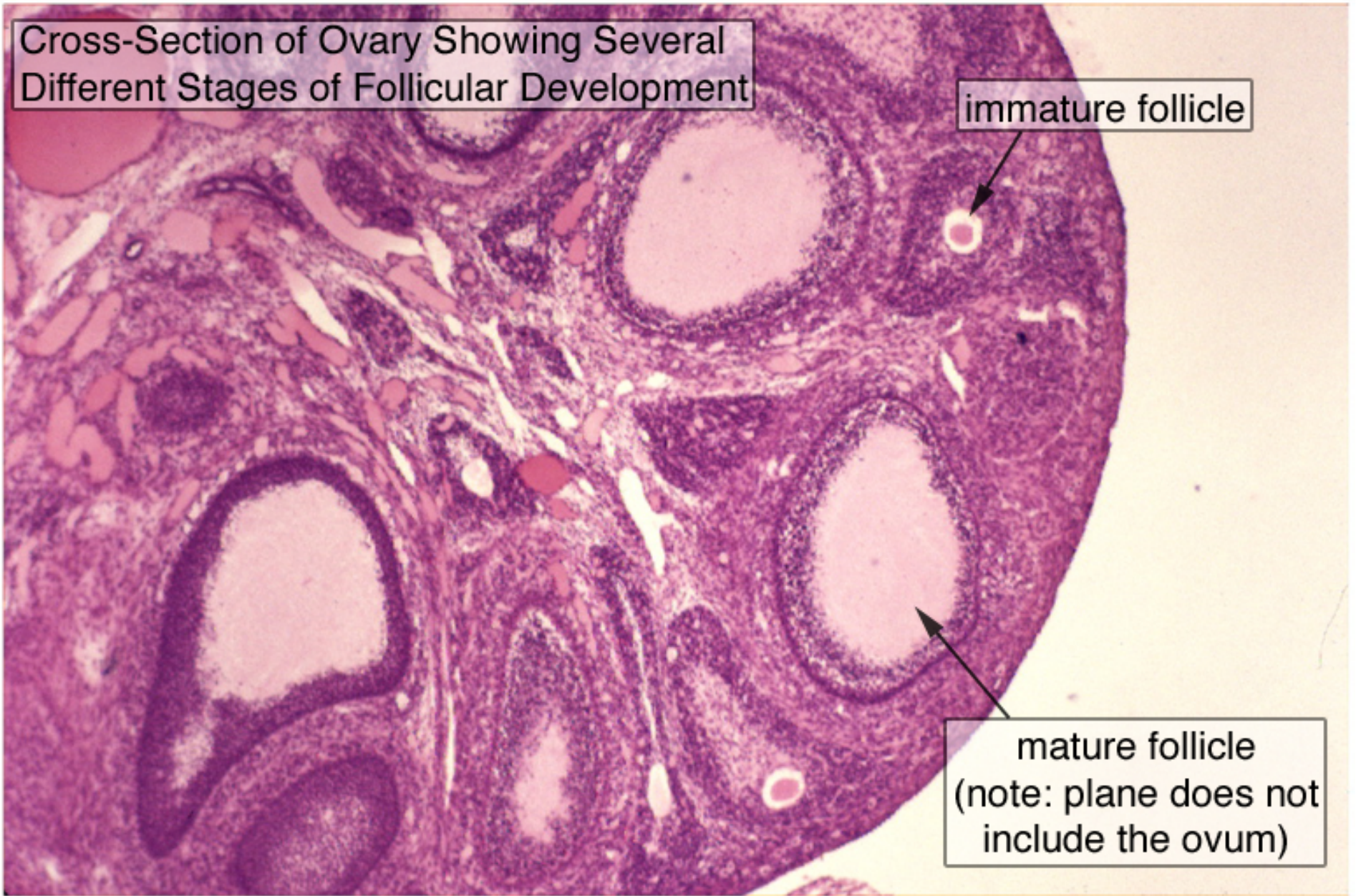




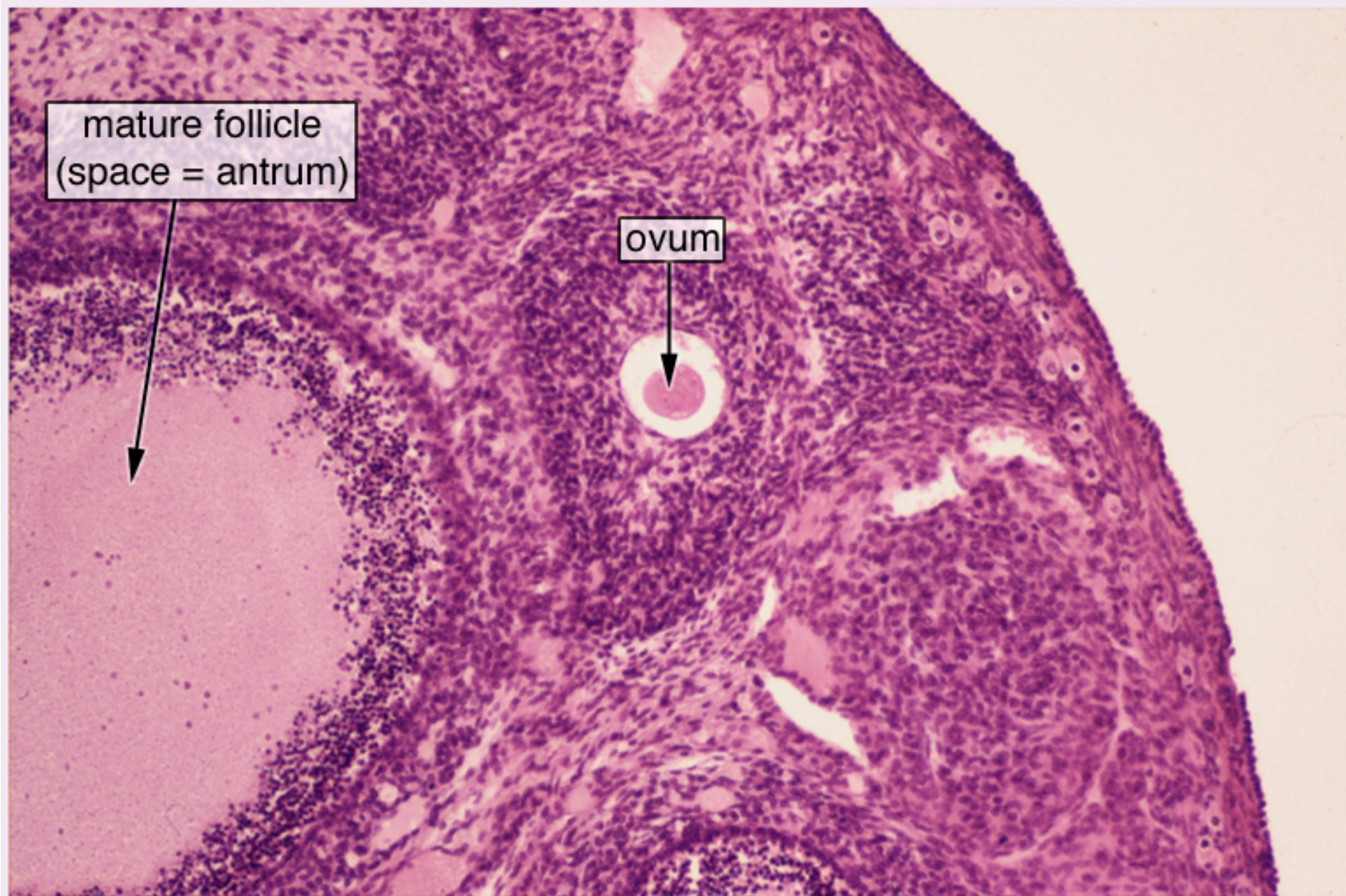
Cross-Section of Ovary Showing Several  
Different Stages of Follicular Development

immature follicle

mature follicle  
(note: plane does not  
include the ovum)





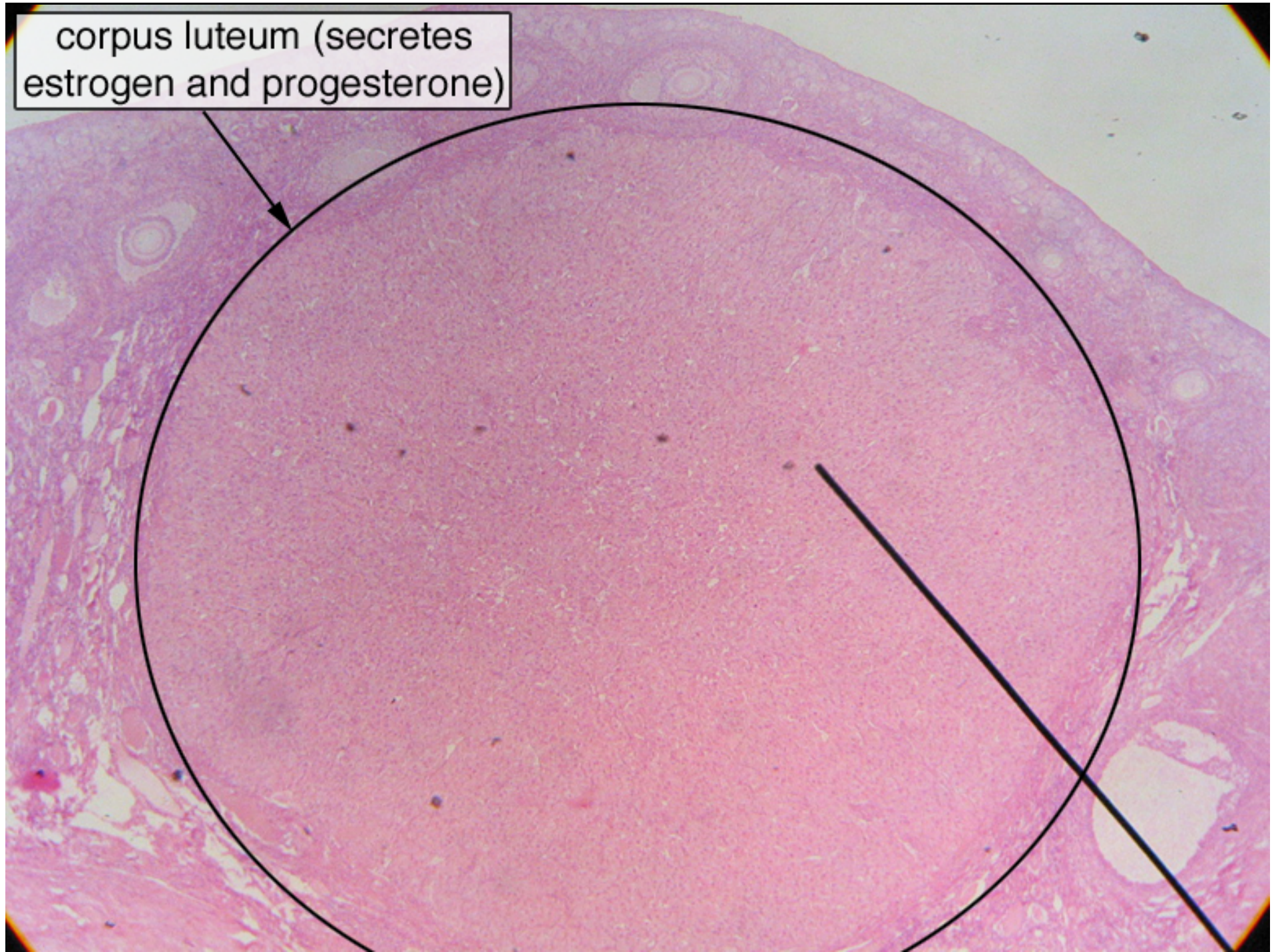








corpus luteum (secretes  
estrogen and progesterone)

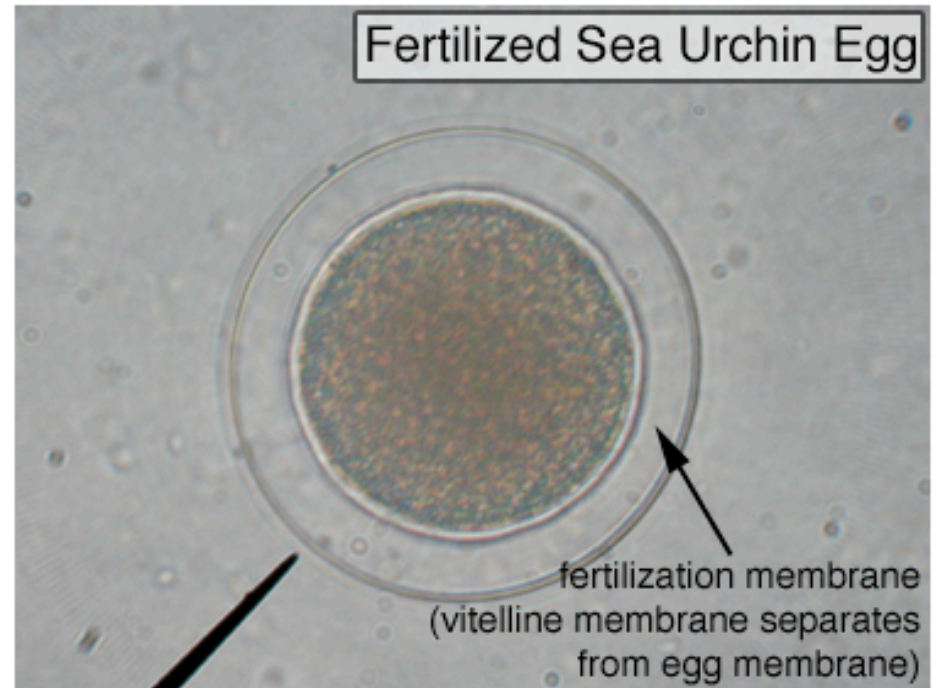




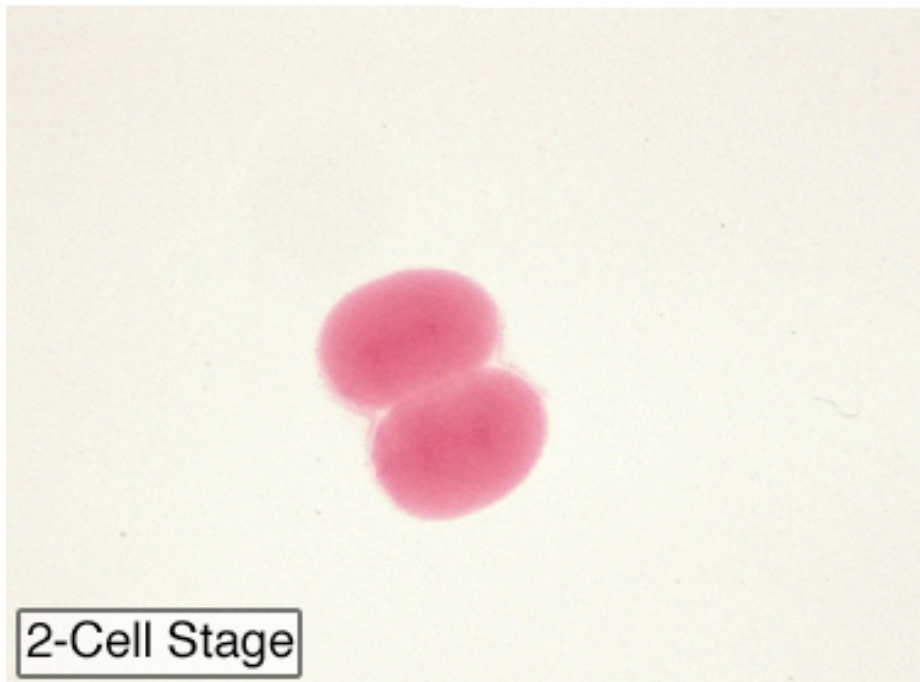
Sea Urchin Eggs/Ova



Fertilized Sea Urchin Egg

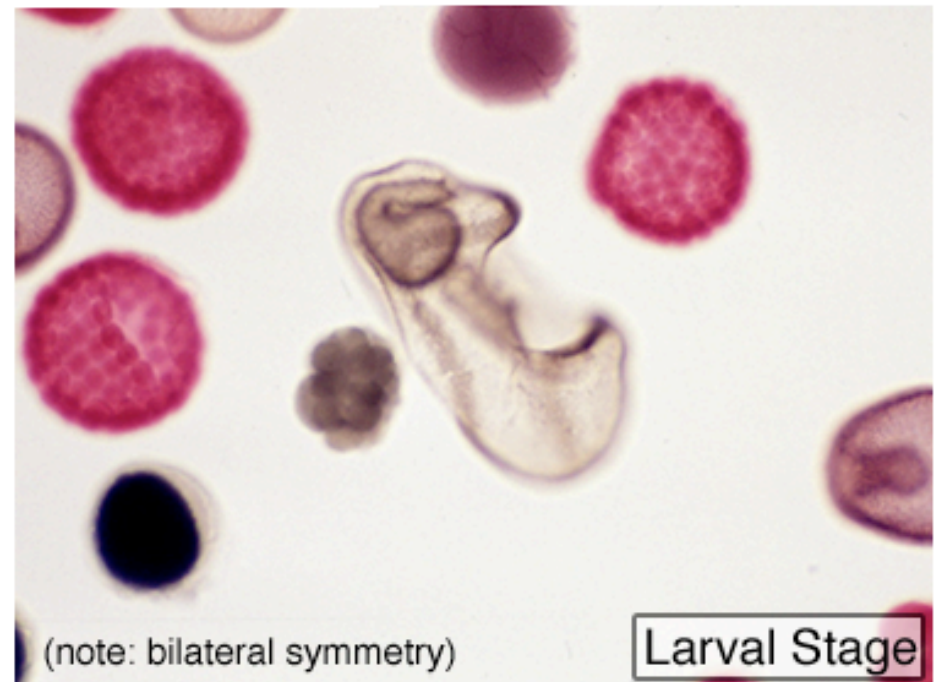


2-Cell Stage



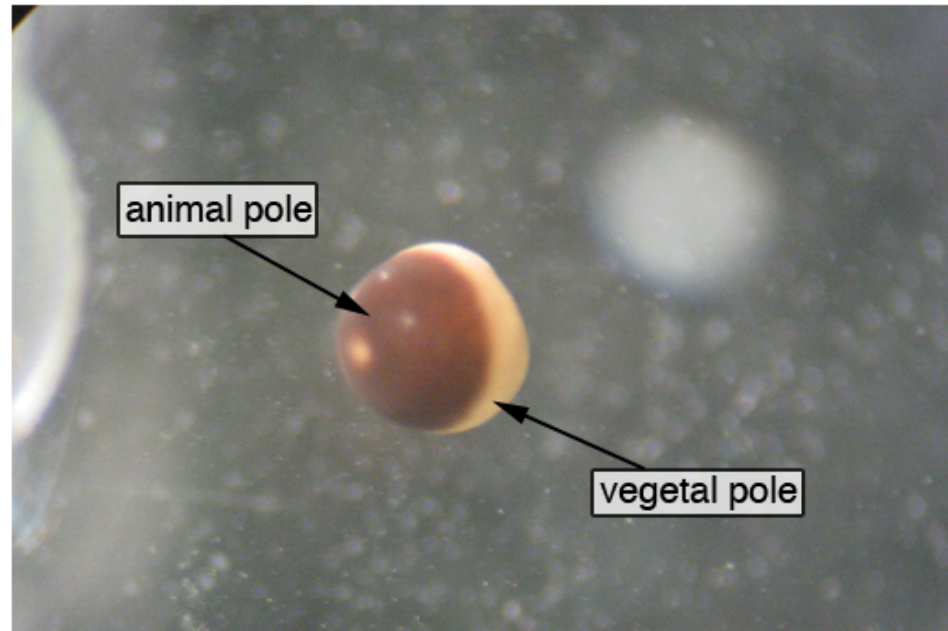
(note: bilateral symmetry)

Larval Stage





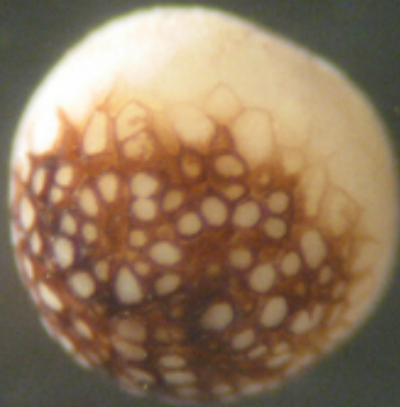
## Frog Eggs



(8 cell) note: unequal cell sizes, holoblastic cleavage



1.



2.



3.

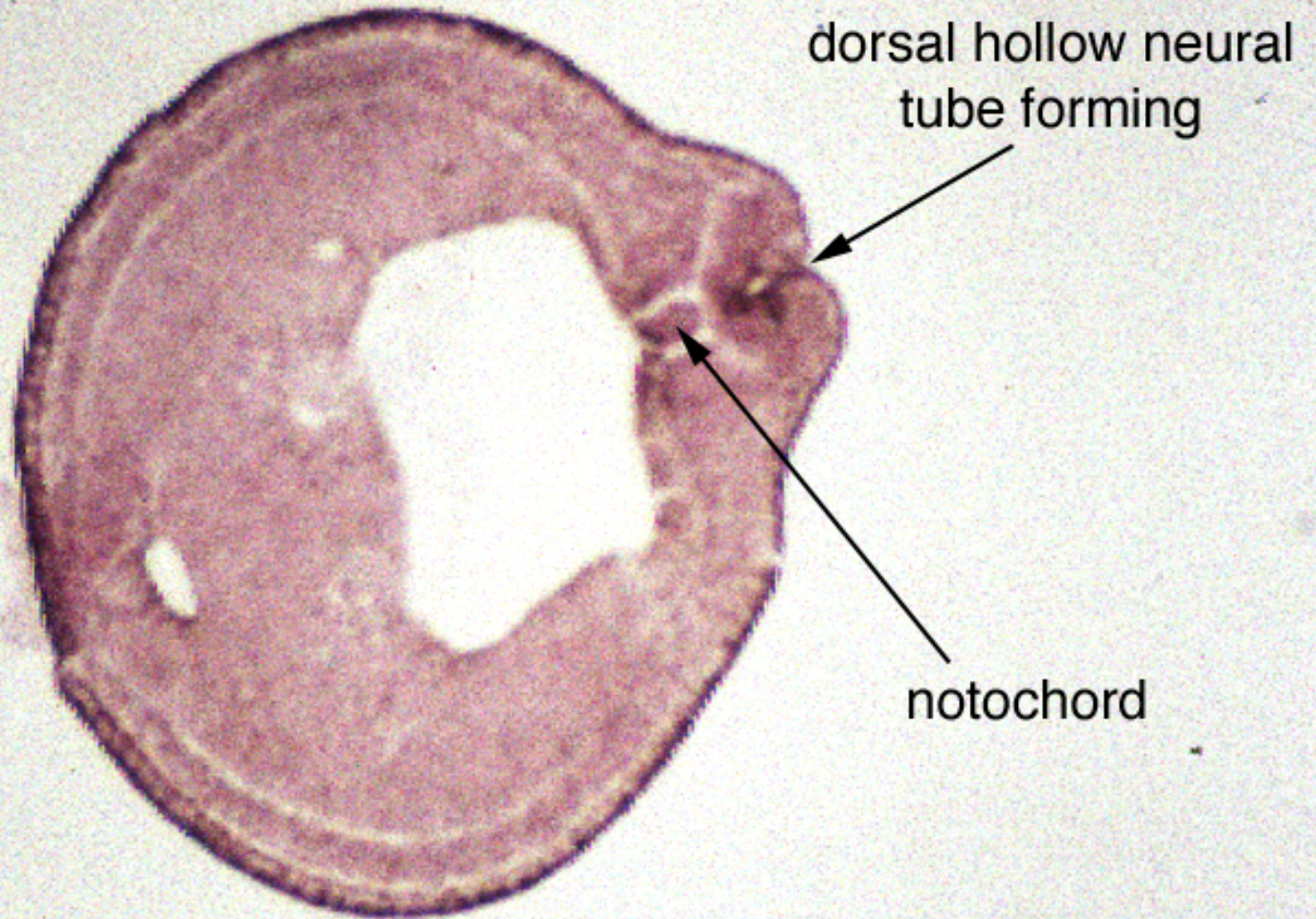


## Frog Eggs

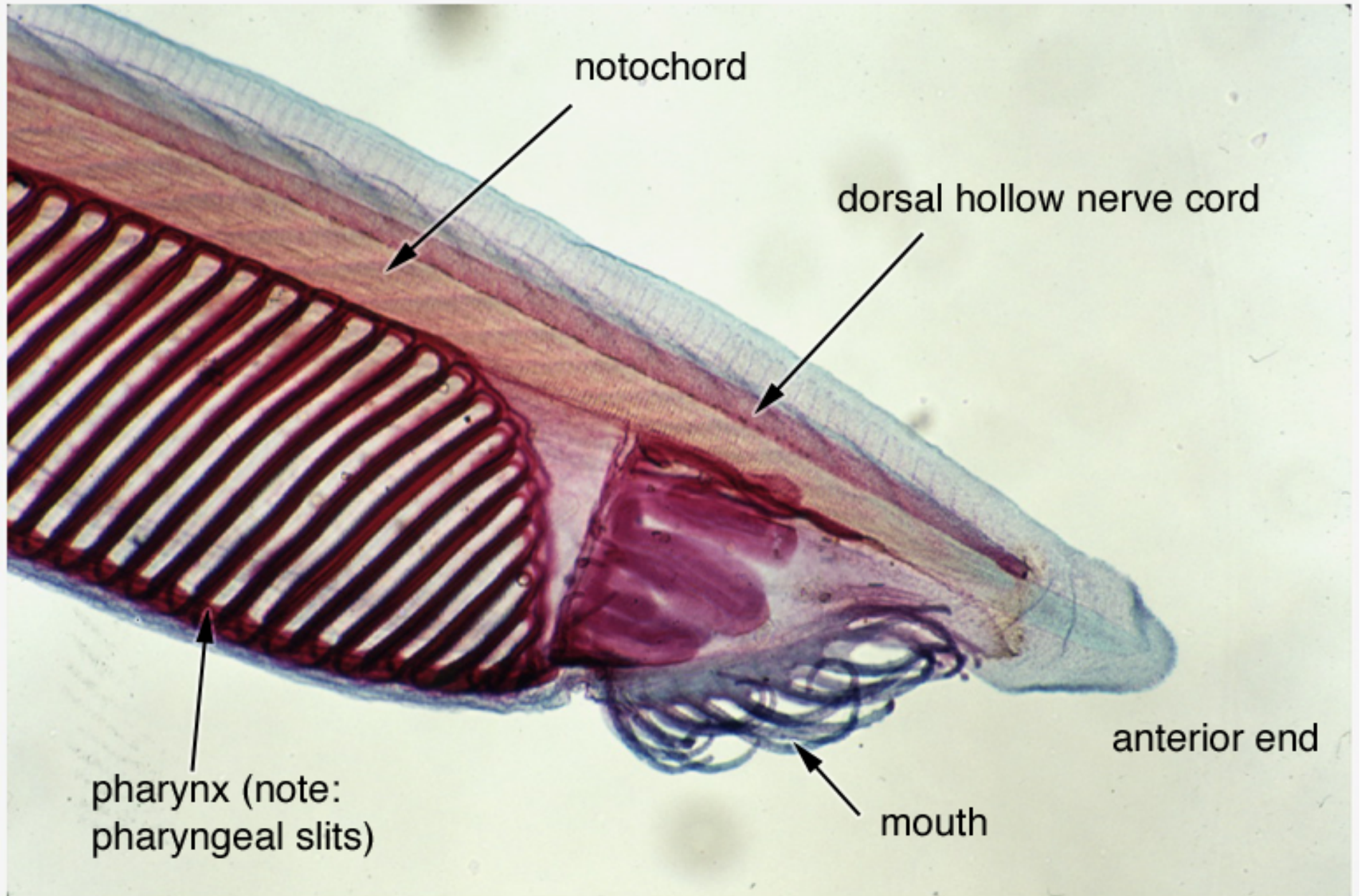
1. morula stage (solid ball) or  
blastula stage (blastocoel within)  
  
-- a cross-section would reveal the absence  
(morula) or presence (blastula) of a blastocoel
2. gastrula stage
3. neurula stage



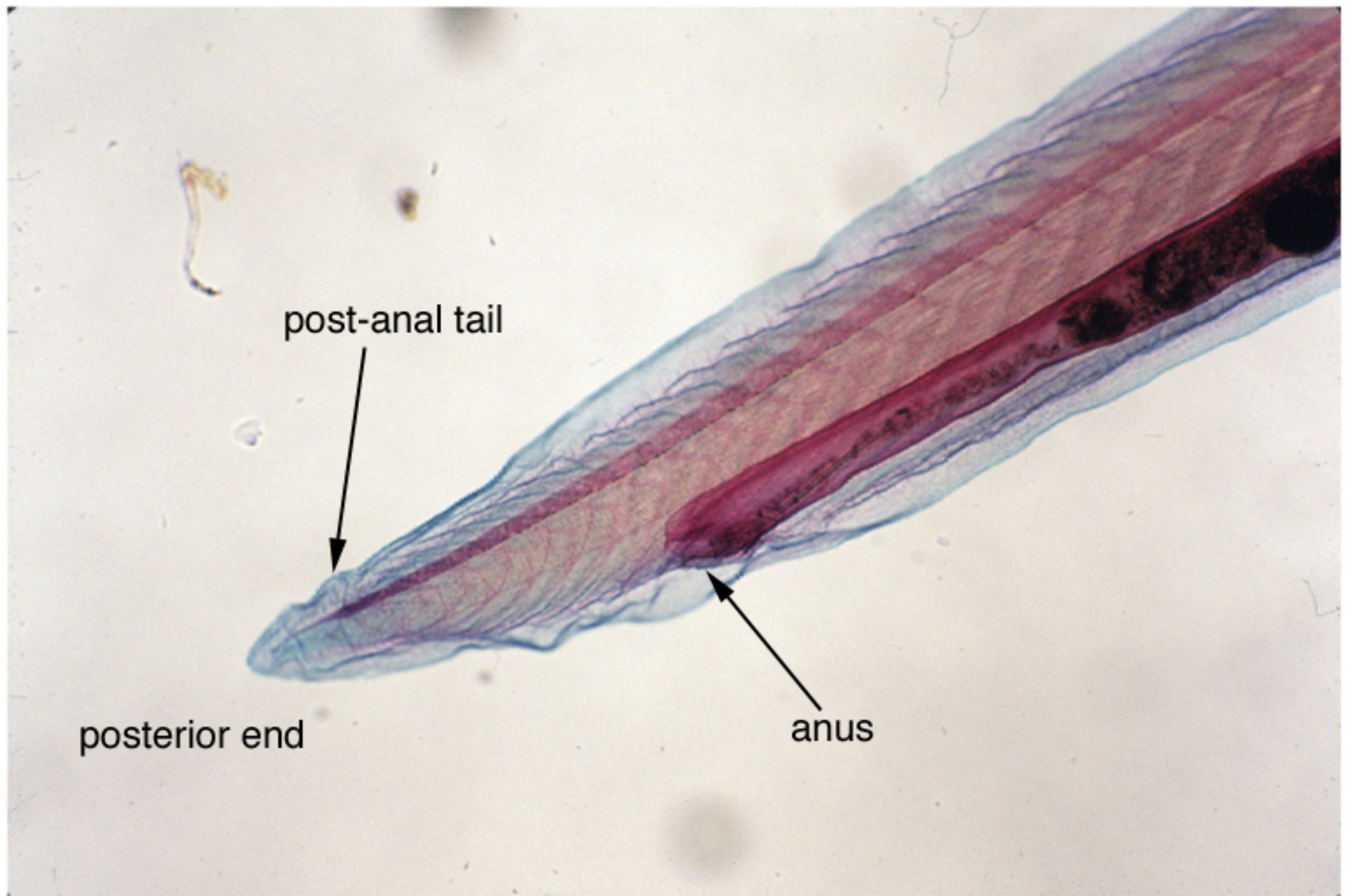
## Cross-Section of Neurula Stage







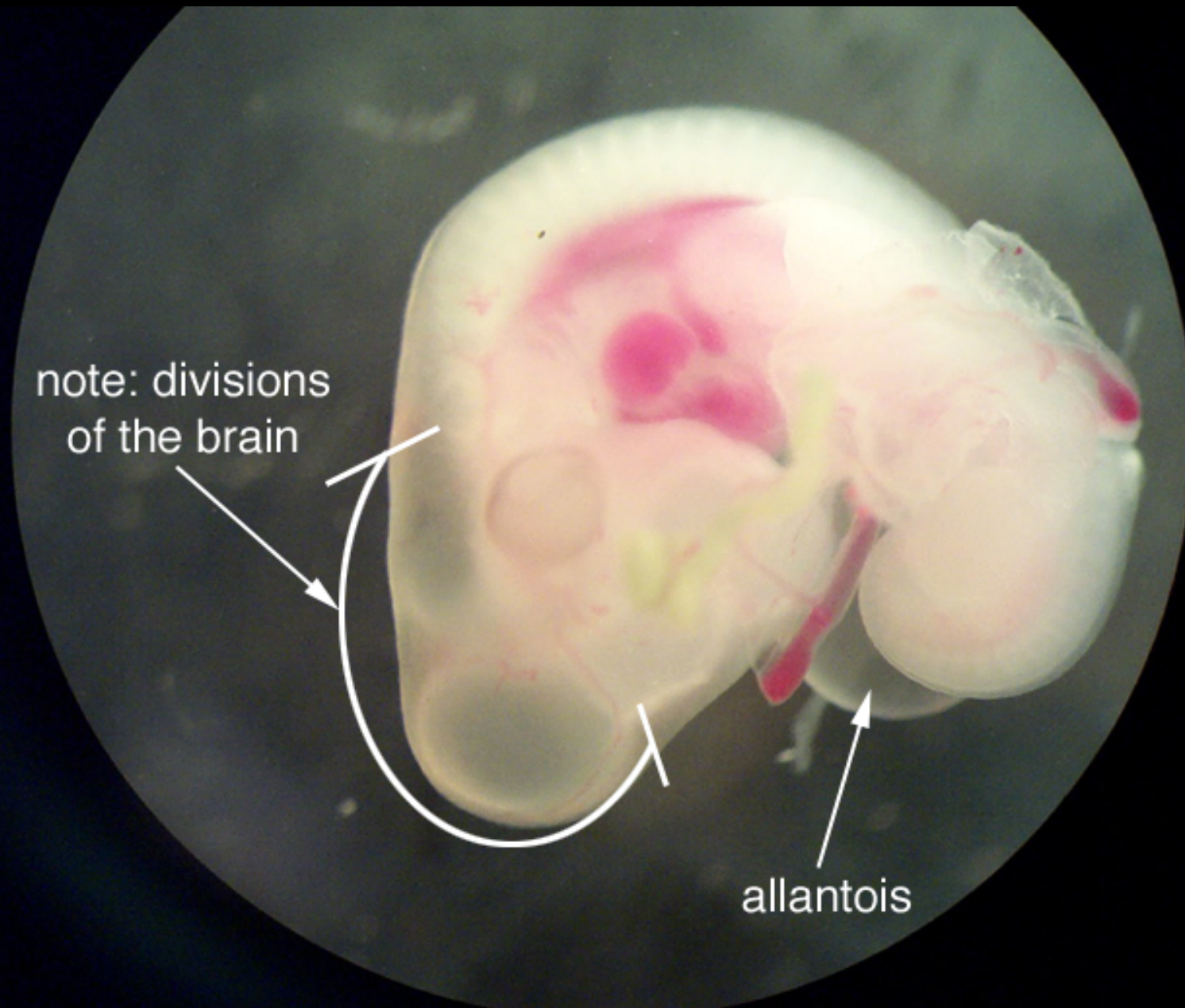




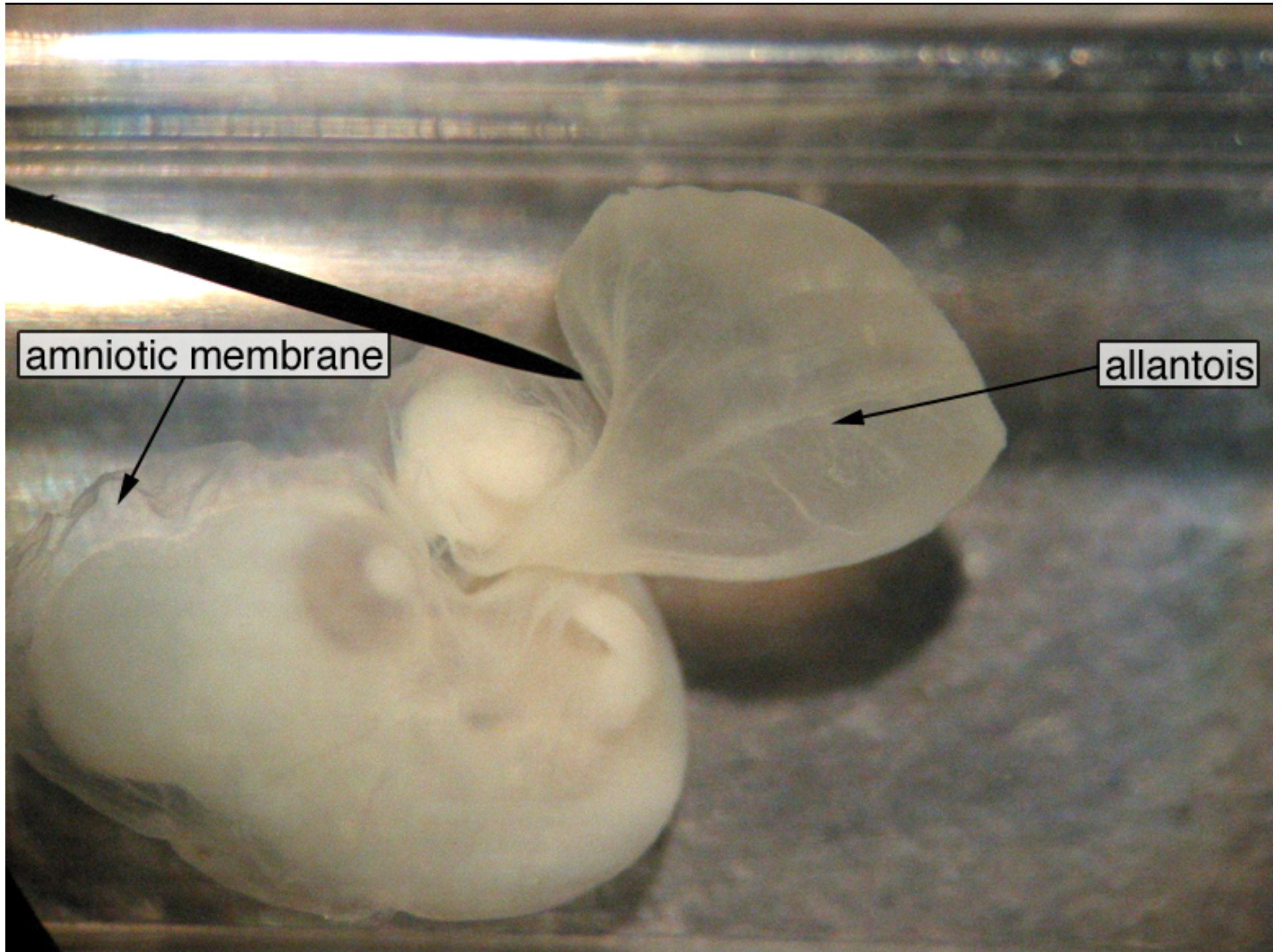


note: divisions  
of the brain

allantois





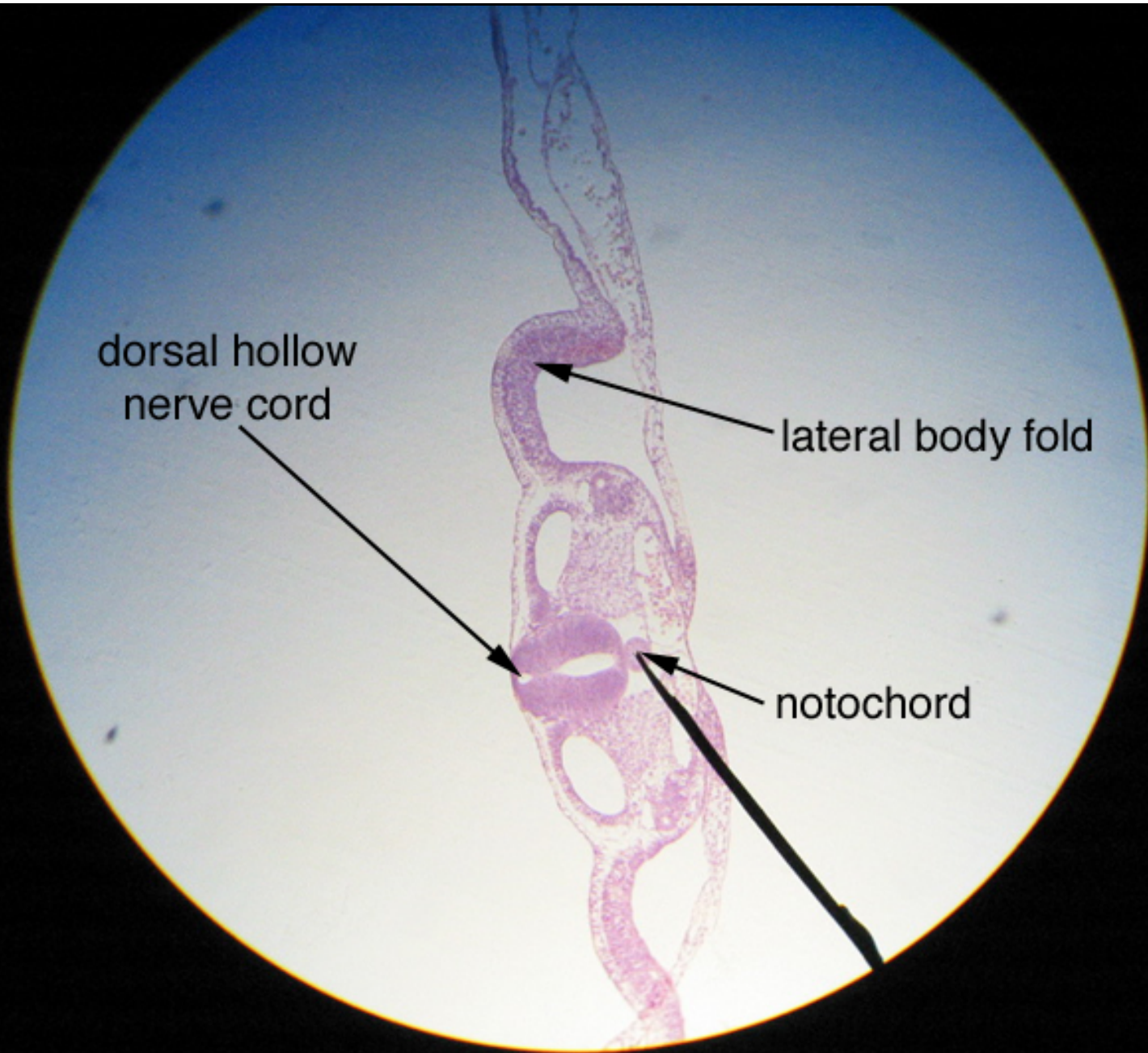




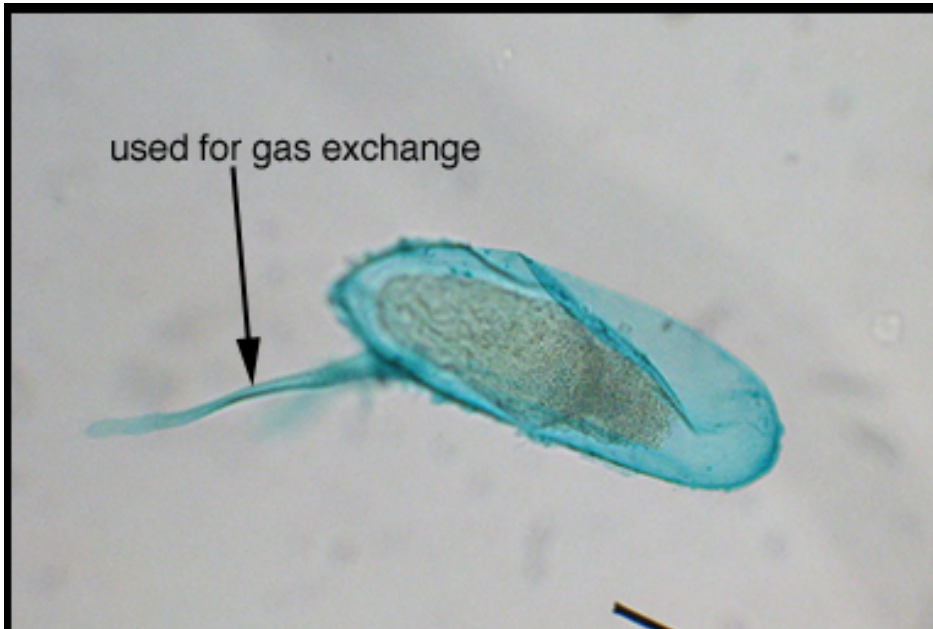
dorsal hollow  
nerve cord

lateral body fold

notochord







Fruit Fly: Egg



Fruit Fly: Larval Stage



Fruit Fly: Pupal Stage



Fruit Fly: Adult Stage