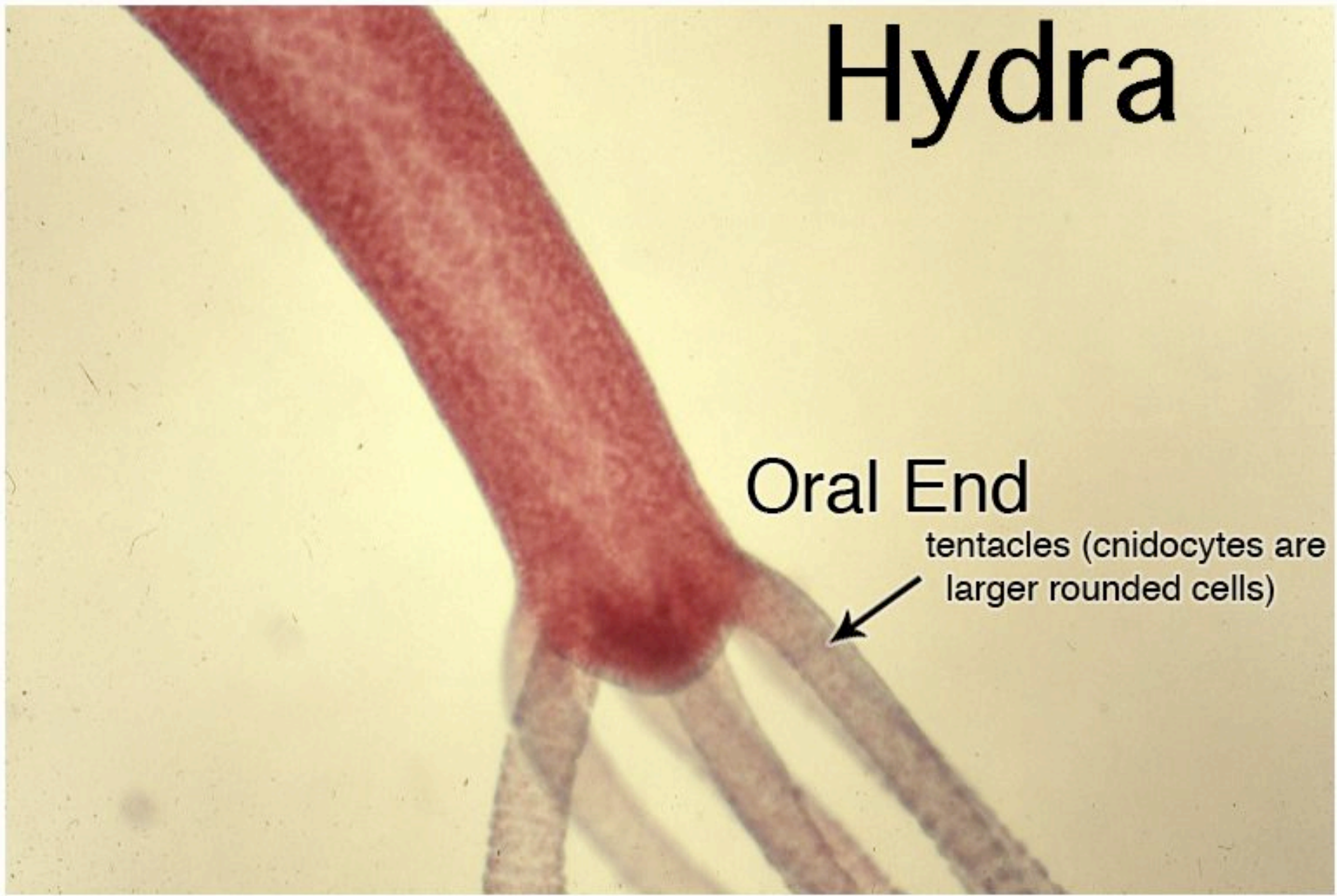


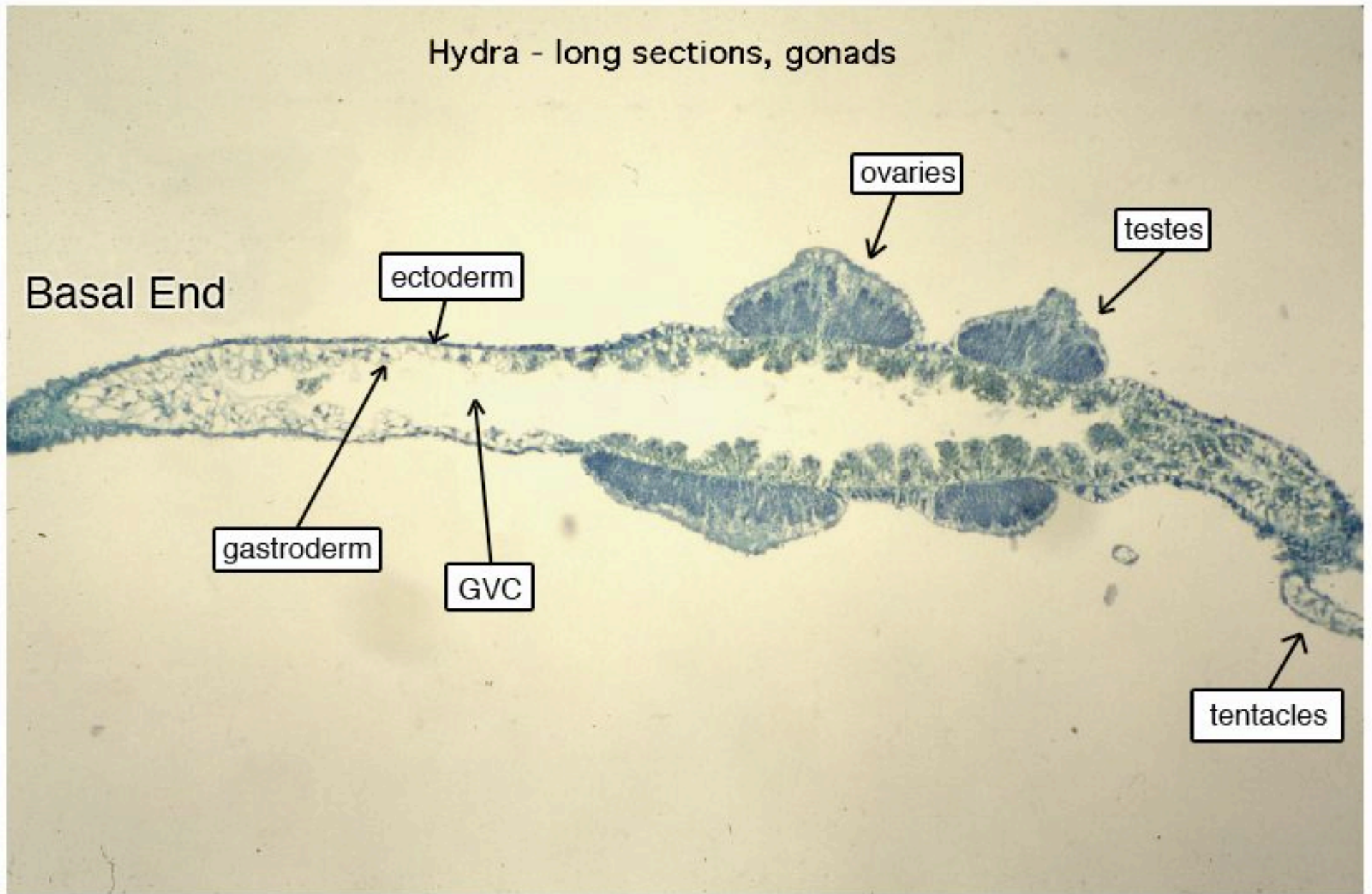
Hydra

Oral End

tentacles (cnidocytes are larger rounded cells)



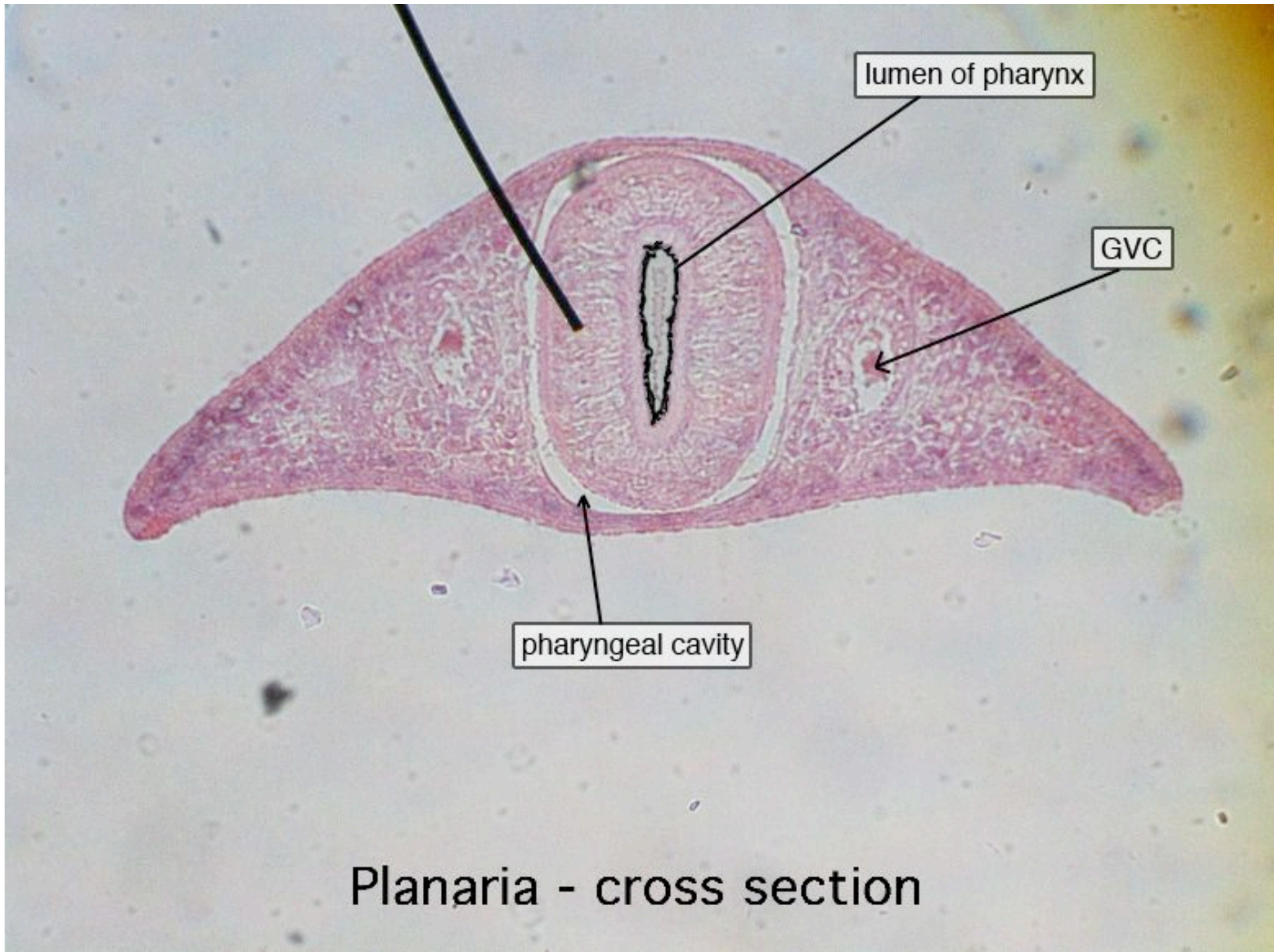
Hydra - long sections, gonads

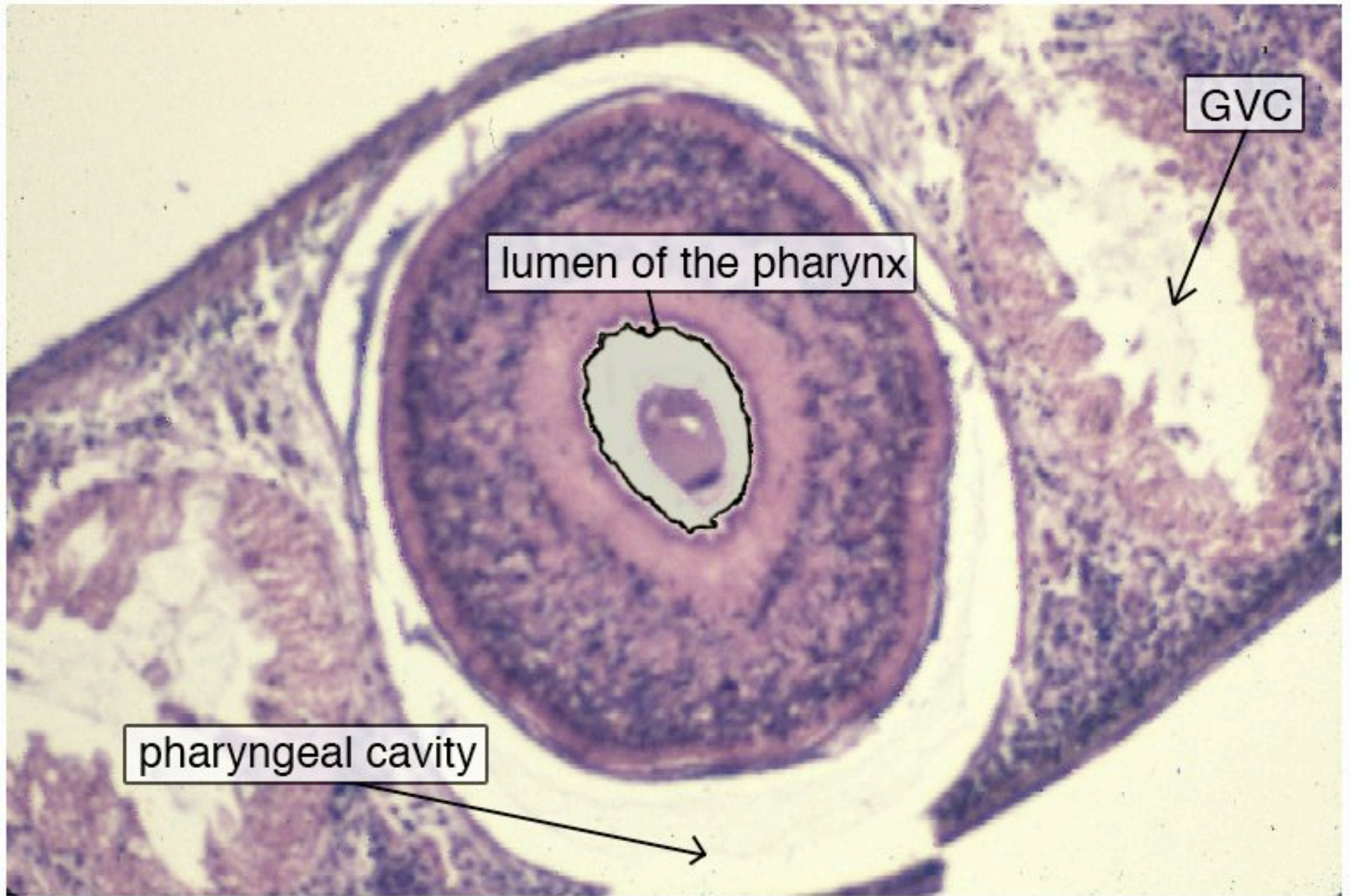


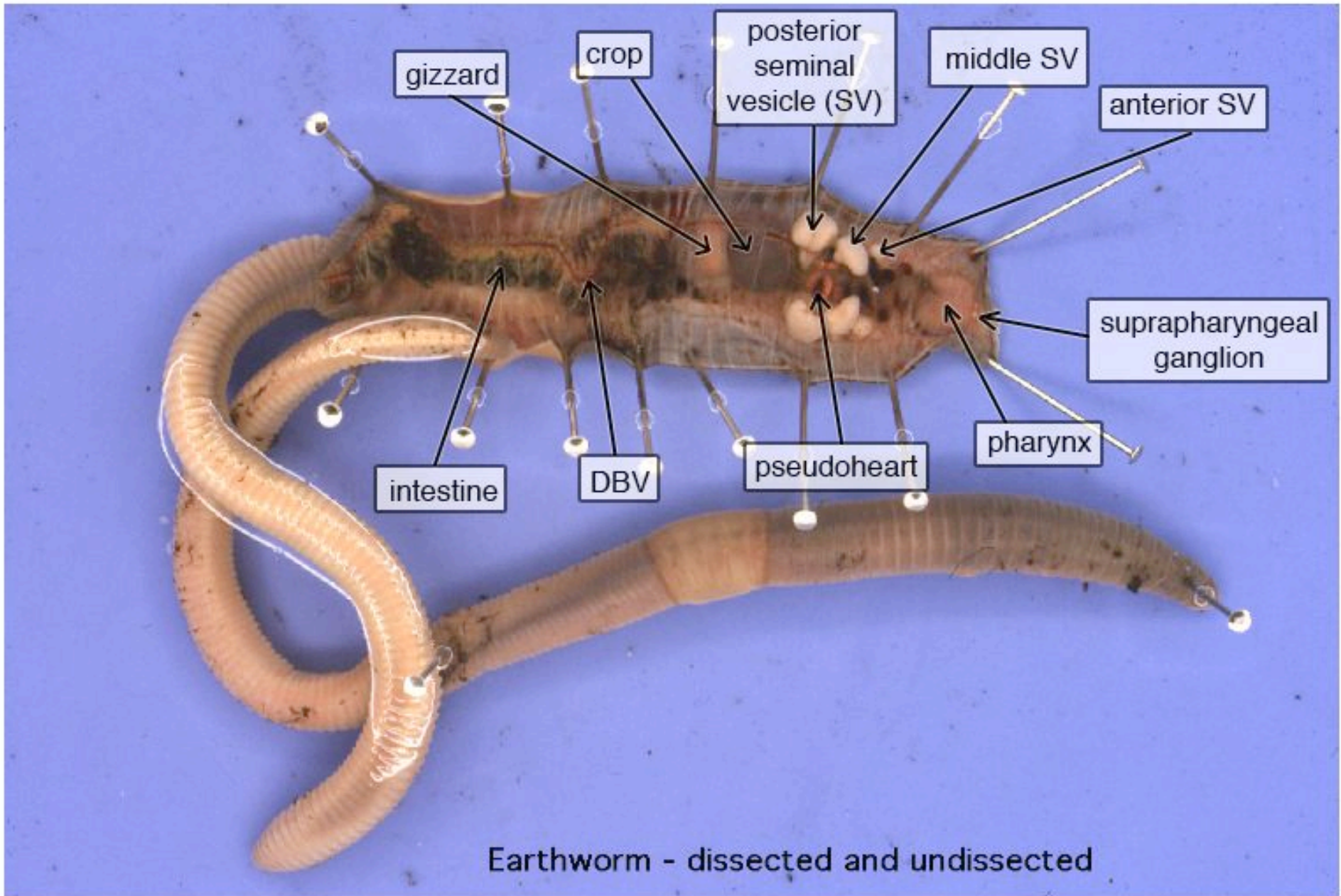
Planaria



- bilateral symmetry
- cephalization
- 3 germ layers
- acoelomate







Earthworm External

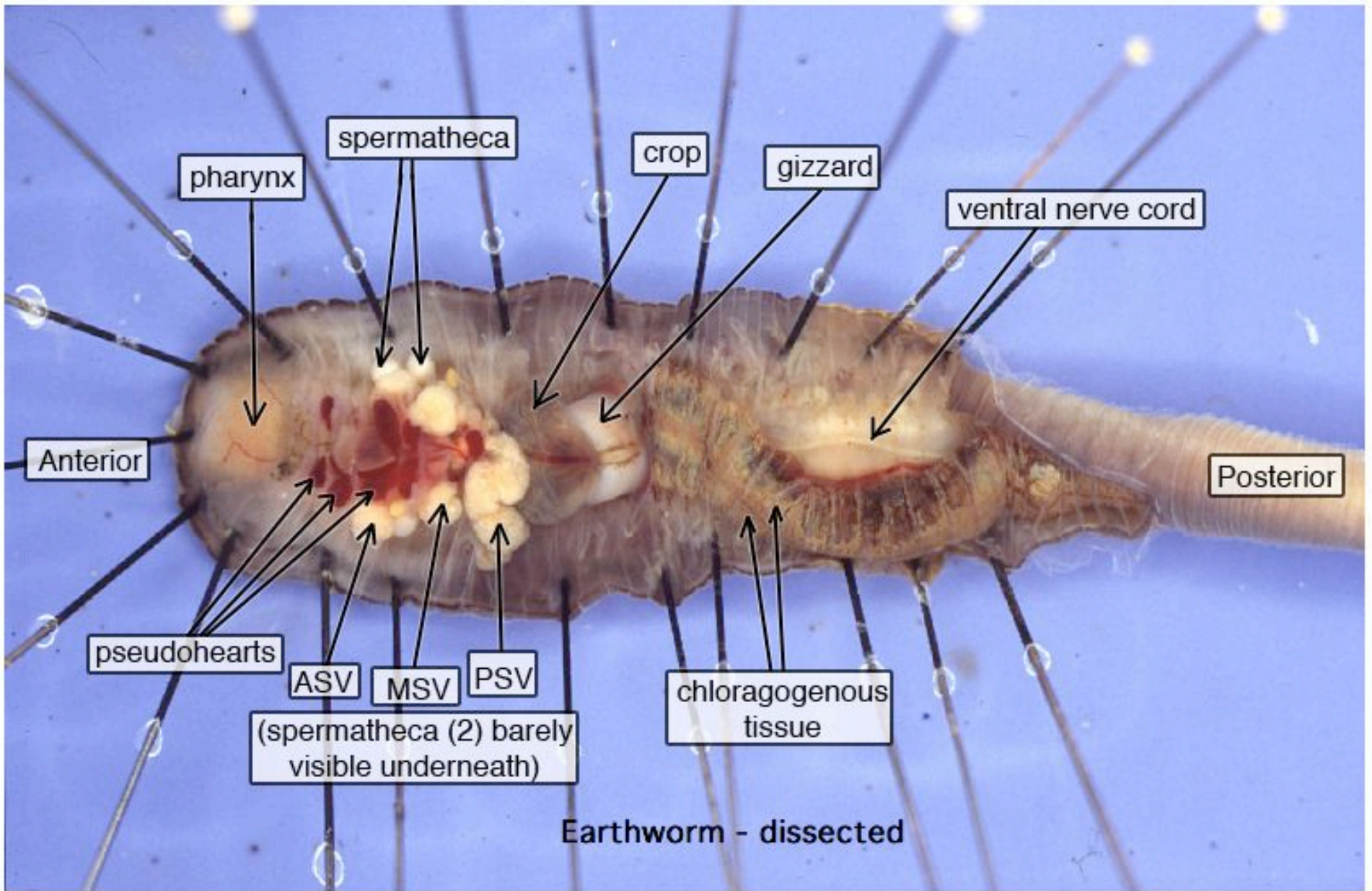
Anterior



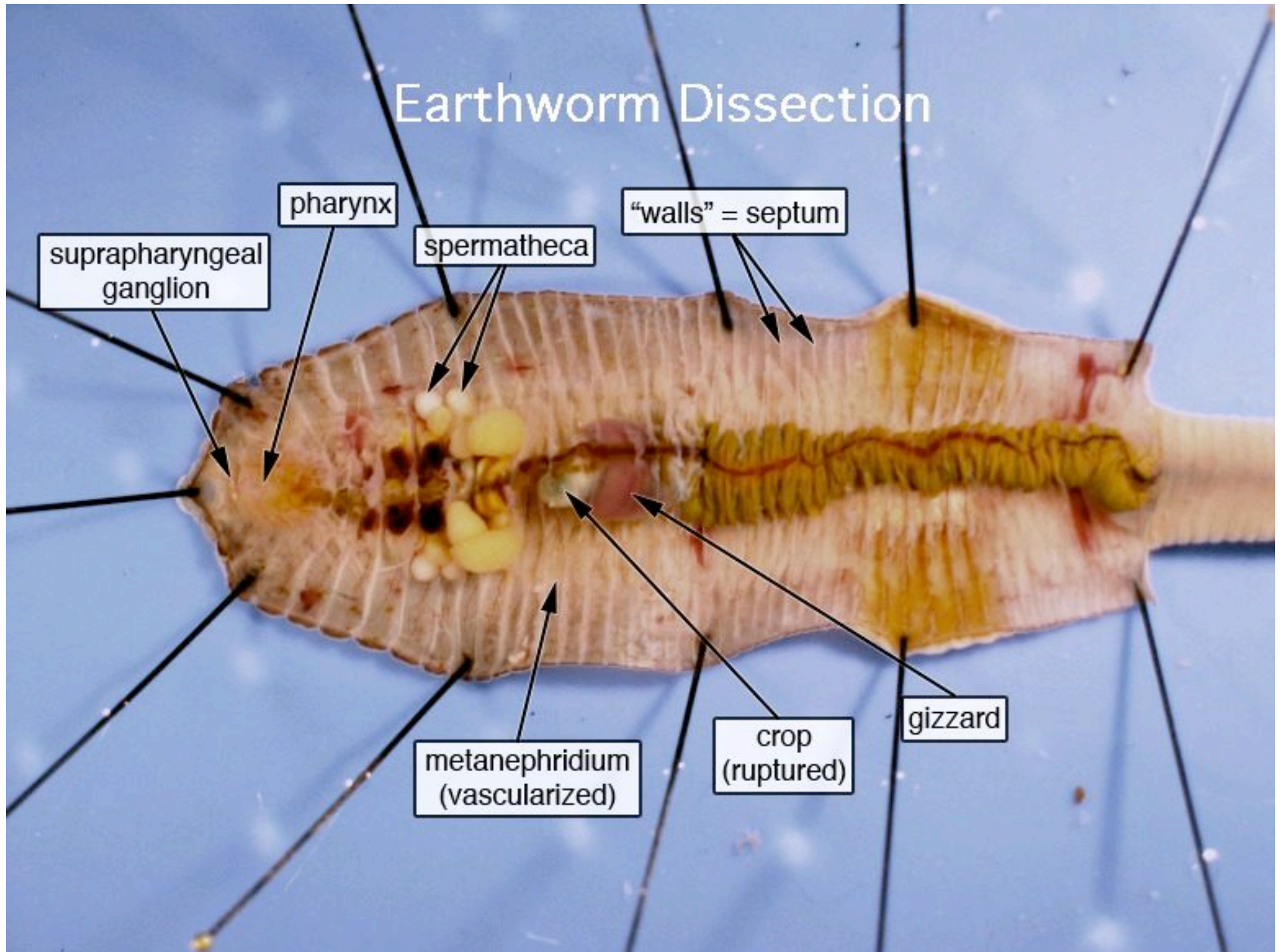
Clitellum

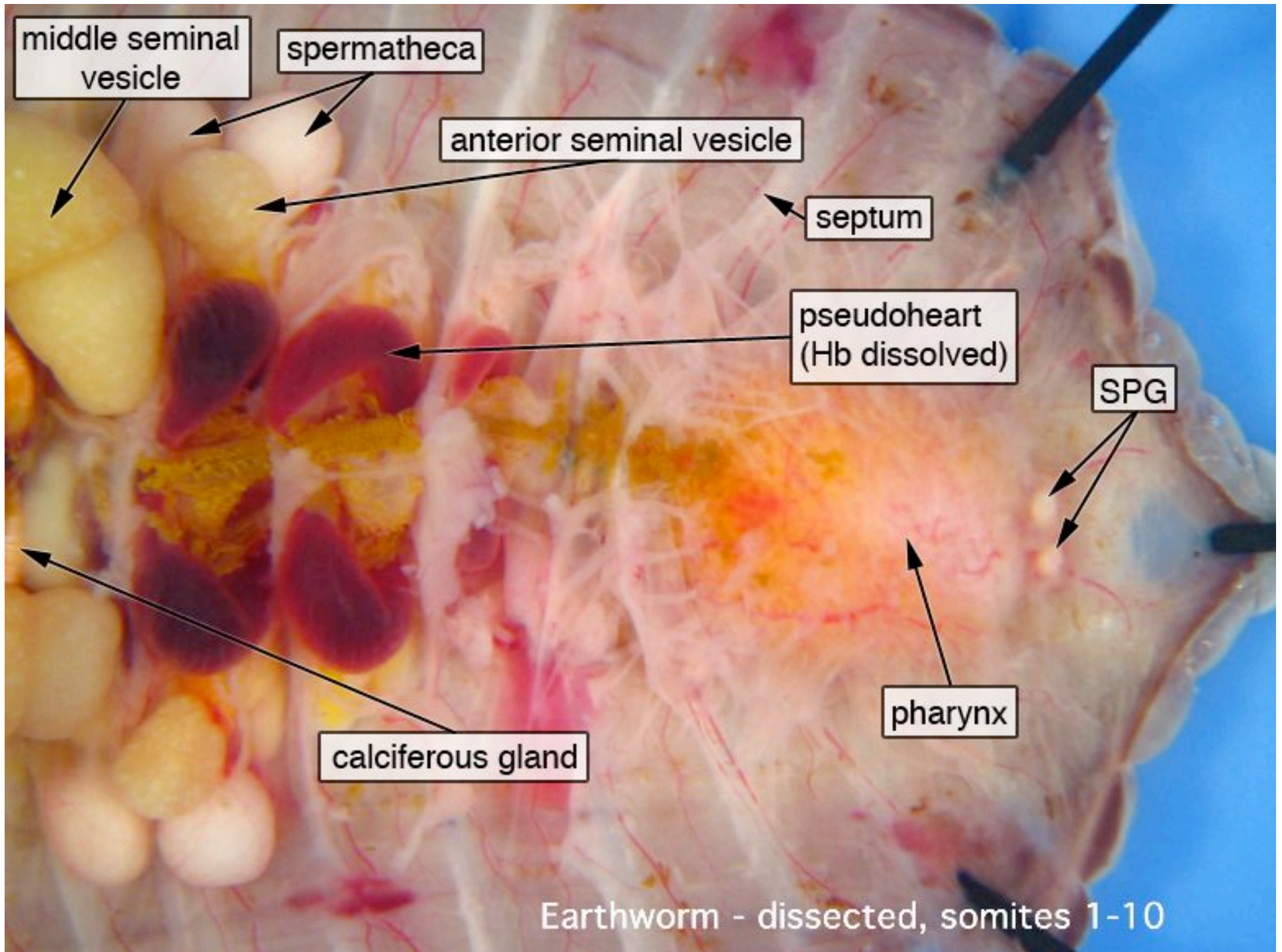
DBV

Posterior

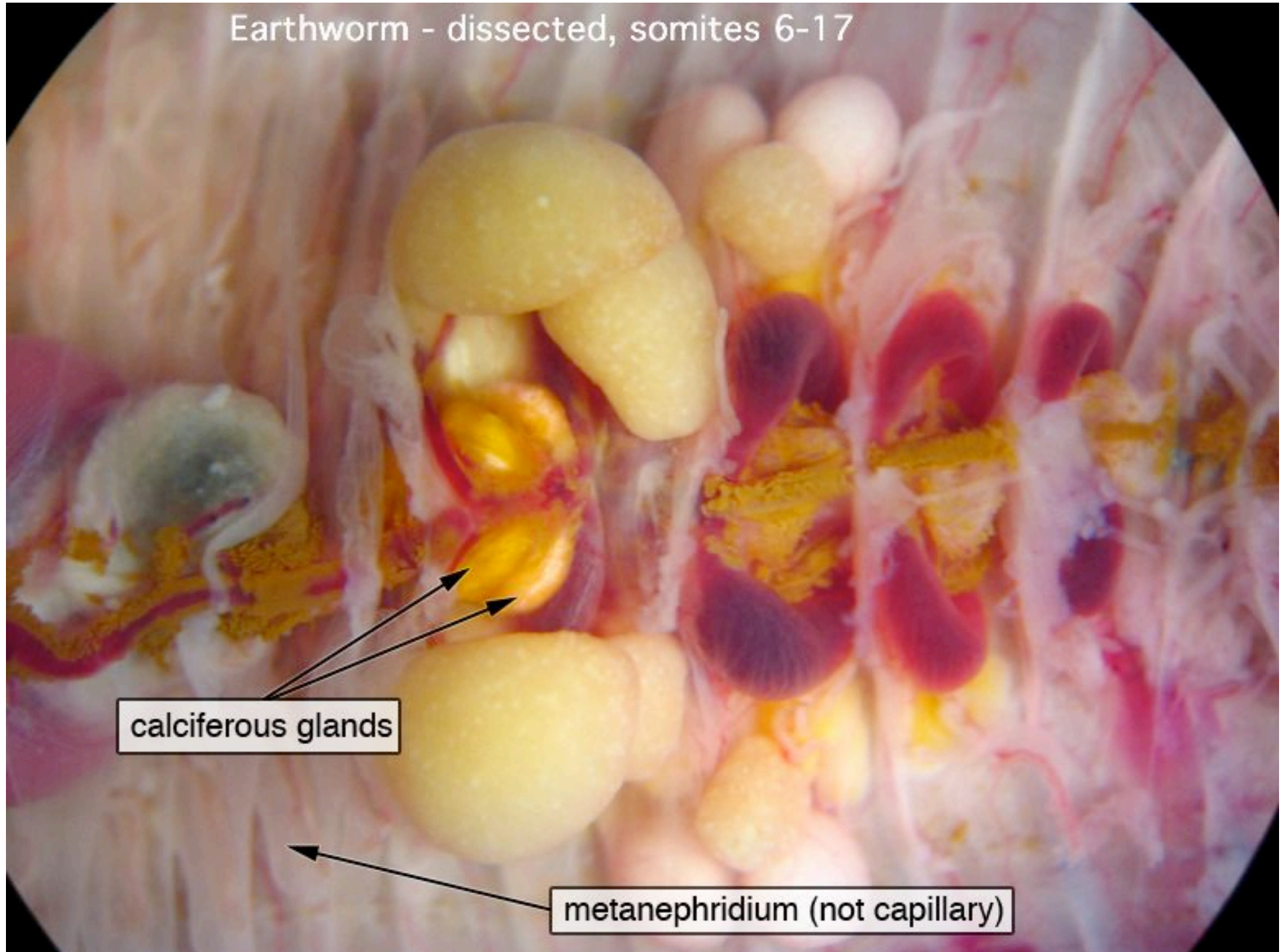


Earthworm Dissection





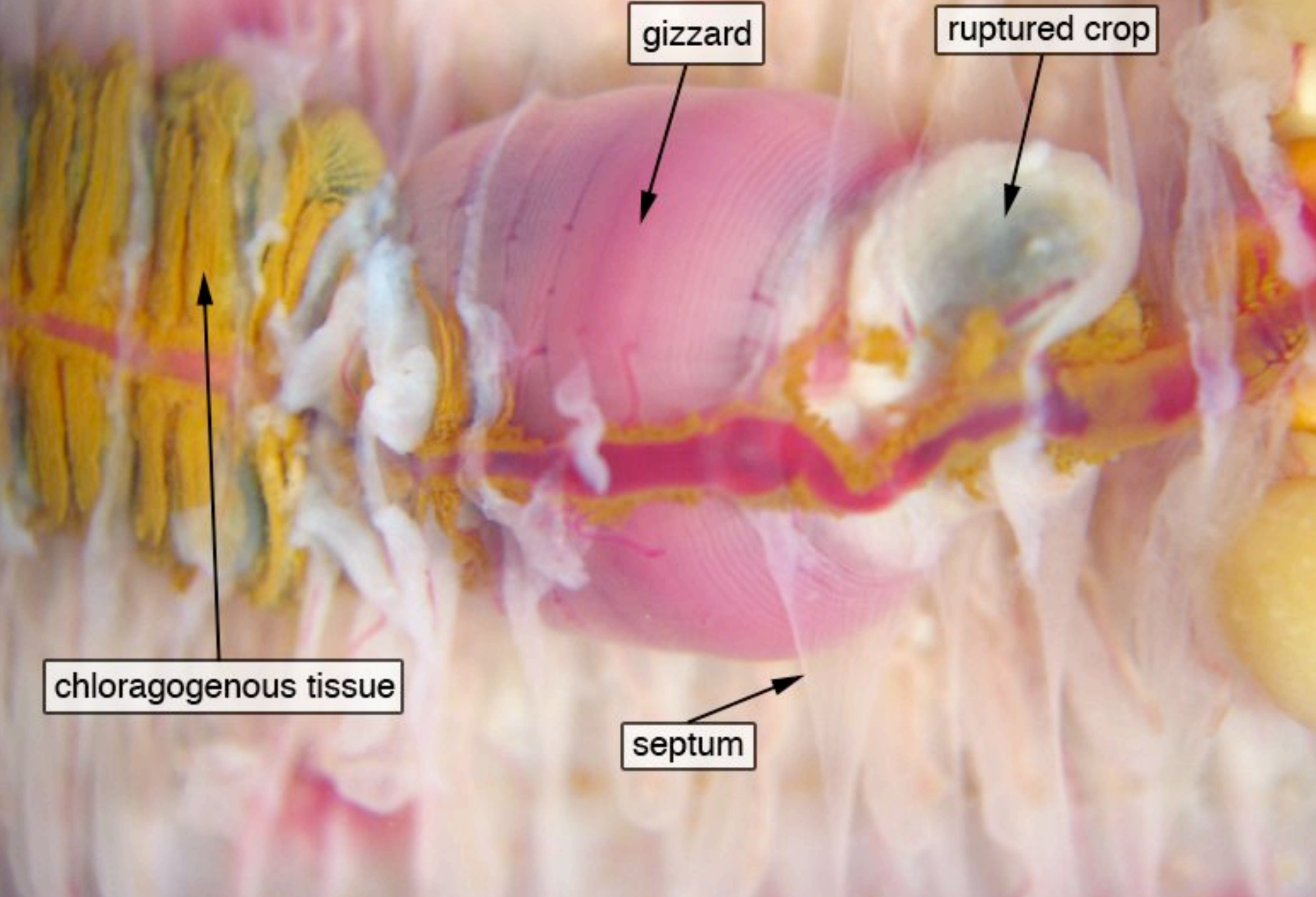
Earthworm - dissected, somites 6-17



calciferous glands

metanephridium (not capillary)

Earthworm - dissected, somites 13-23



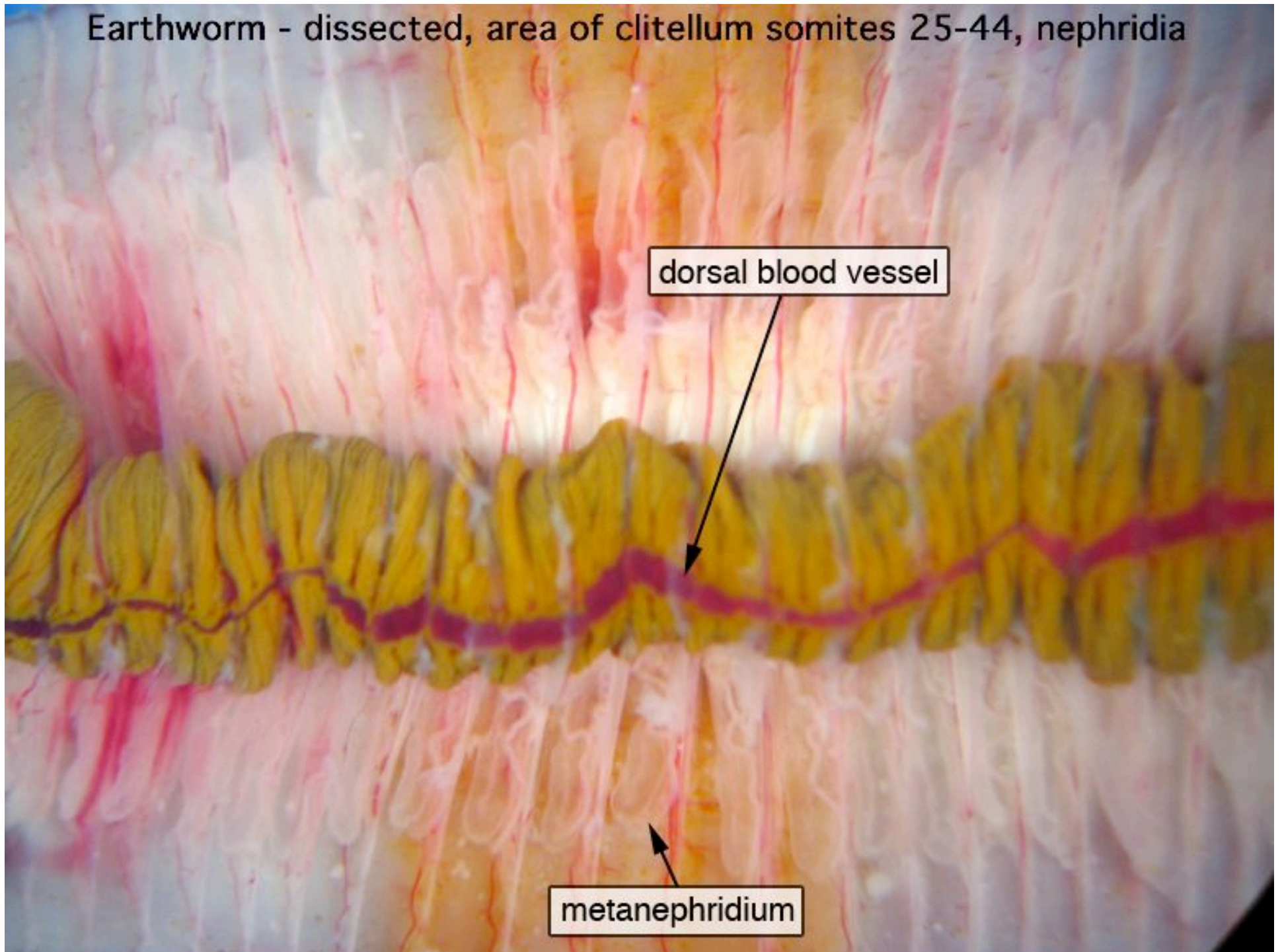
gizzard

ruptured crop

chloragogenous tissue

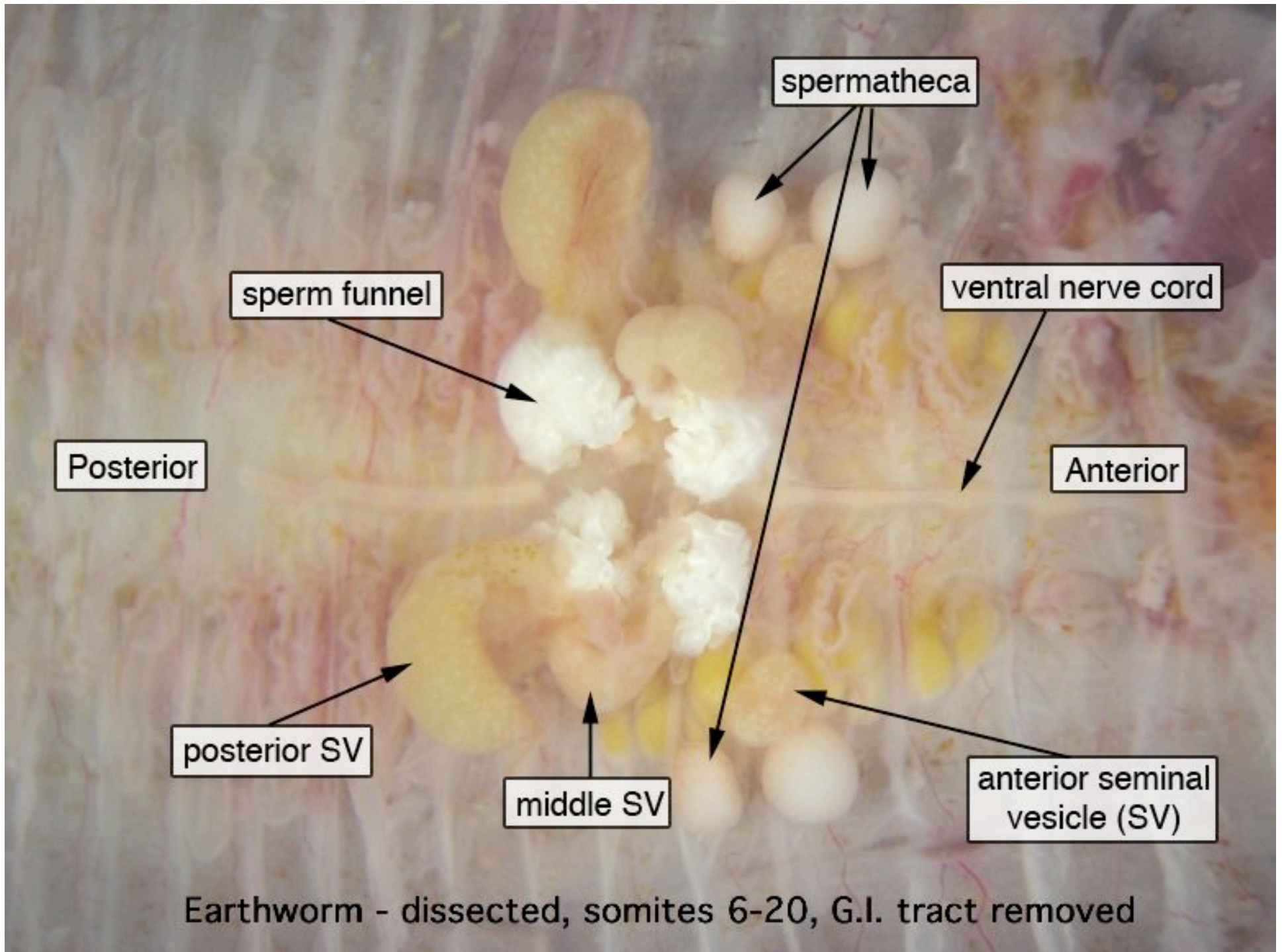
septum

Earthworm - dissected, area of clitellum somites 25-44, nephridia

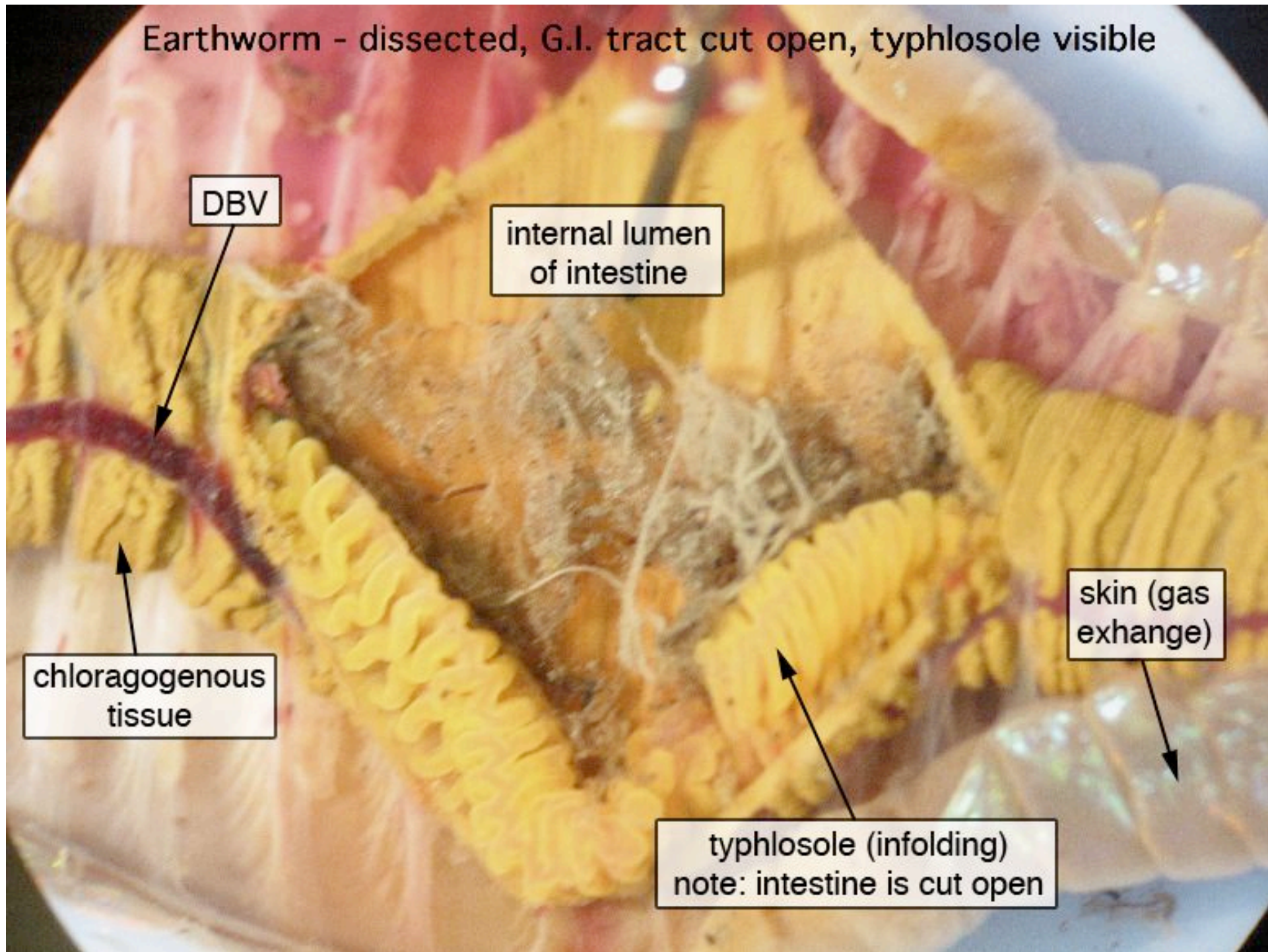


dorsal blood vessel

metanephridium



Earthworm - dissected, G.I. tract cut open, typhlosole visible



DBV

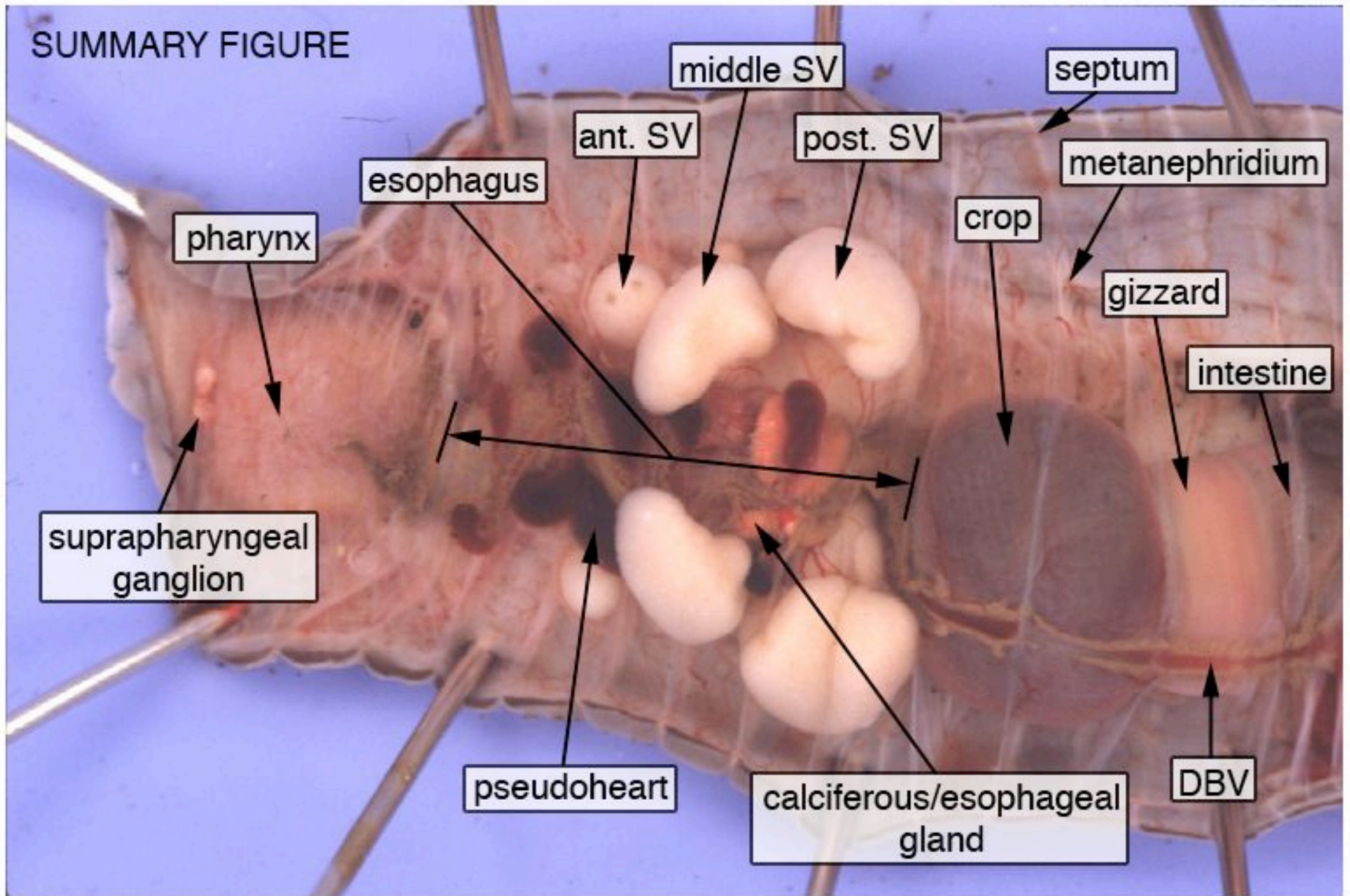
internal lumen
of intestine

chloragogenous
tissue

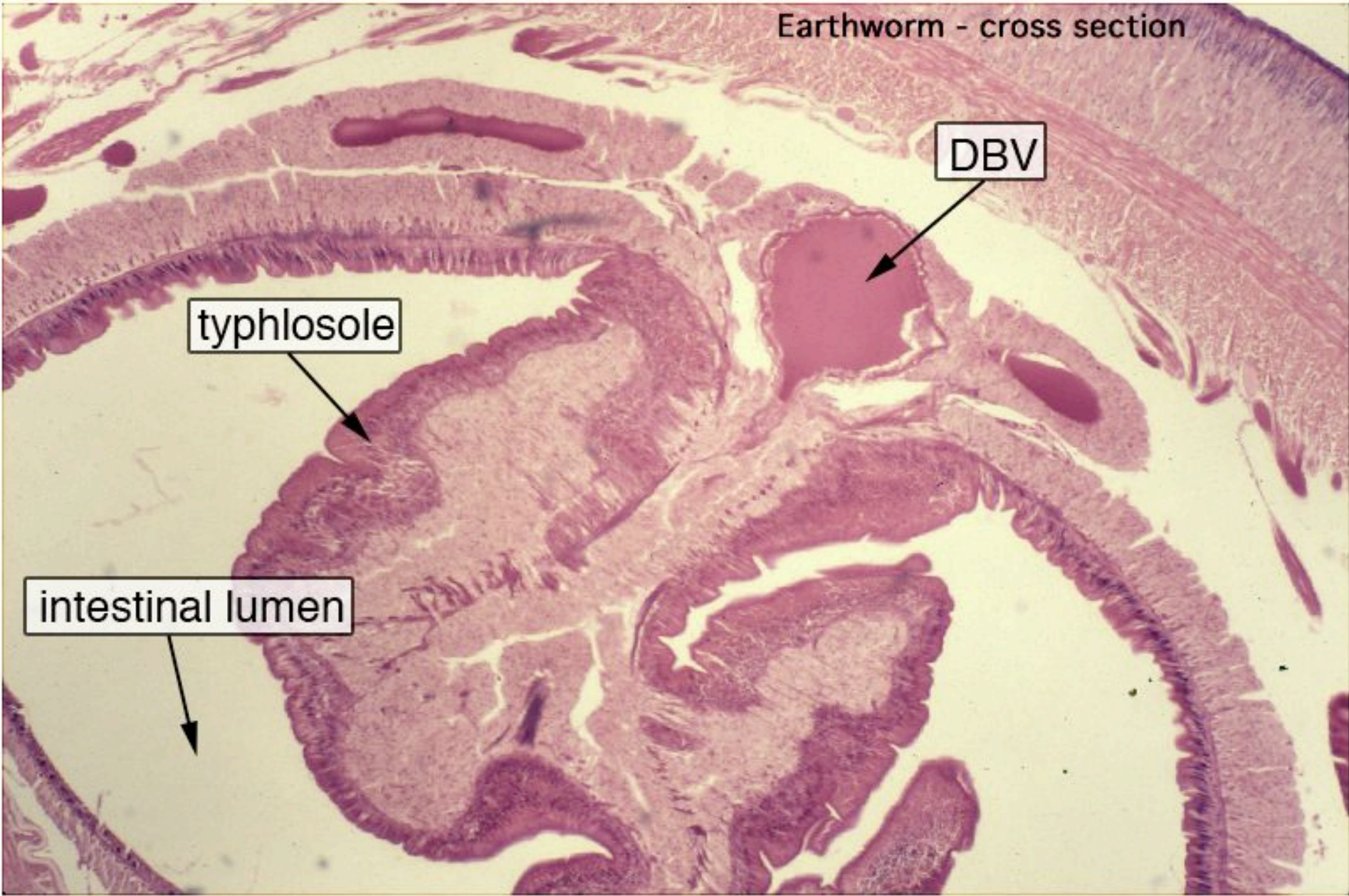
skin (gas
exchange)

typhlosole (infolding)
note: intestine is cut open

SUMMARY FIGURE



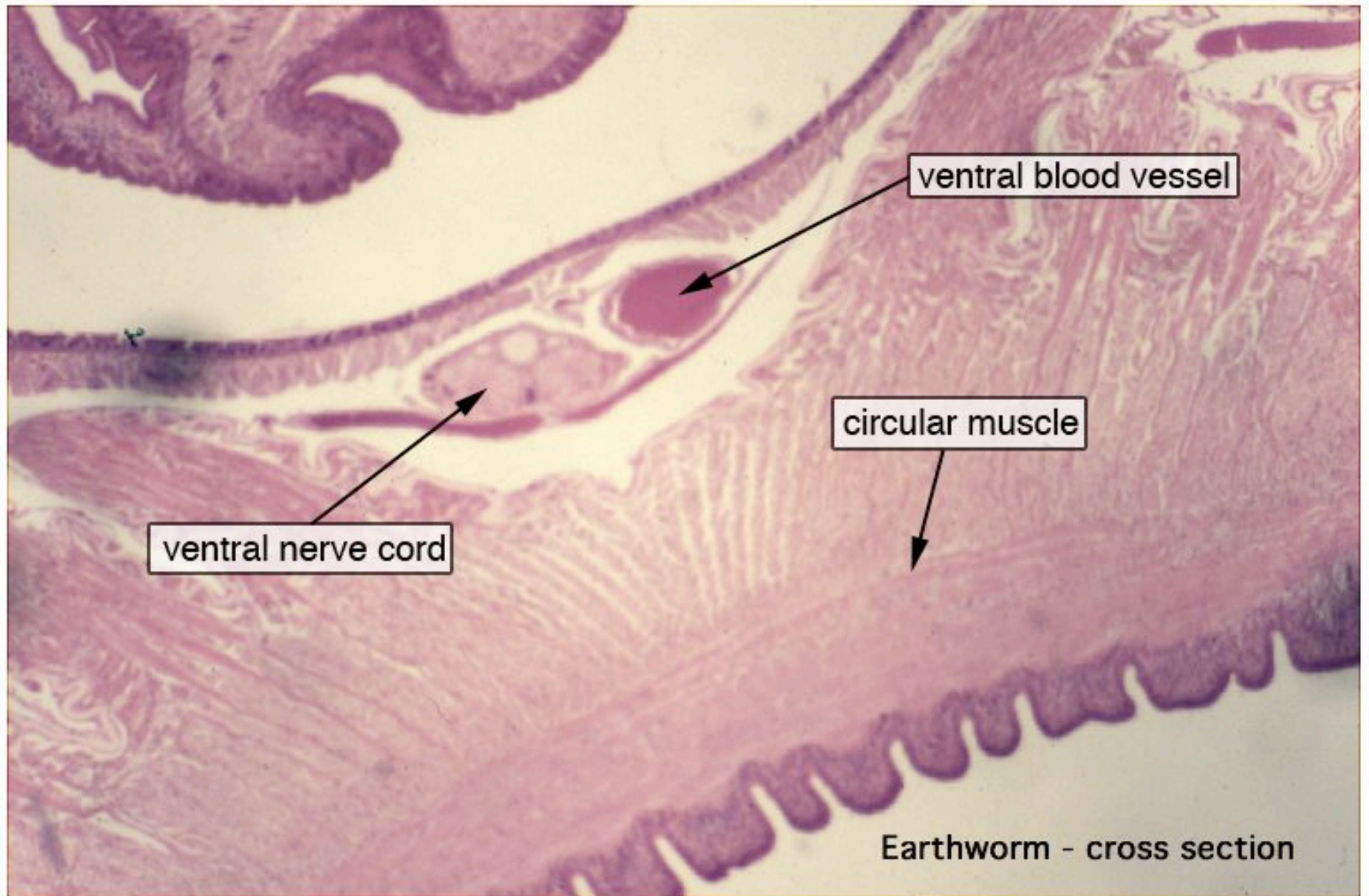
Earthworm - cross section



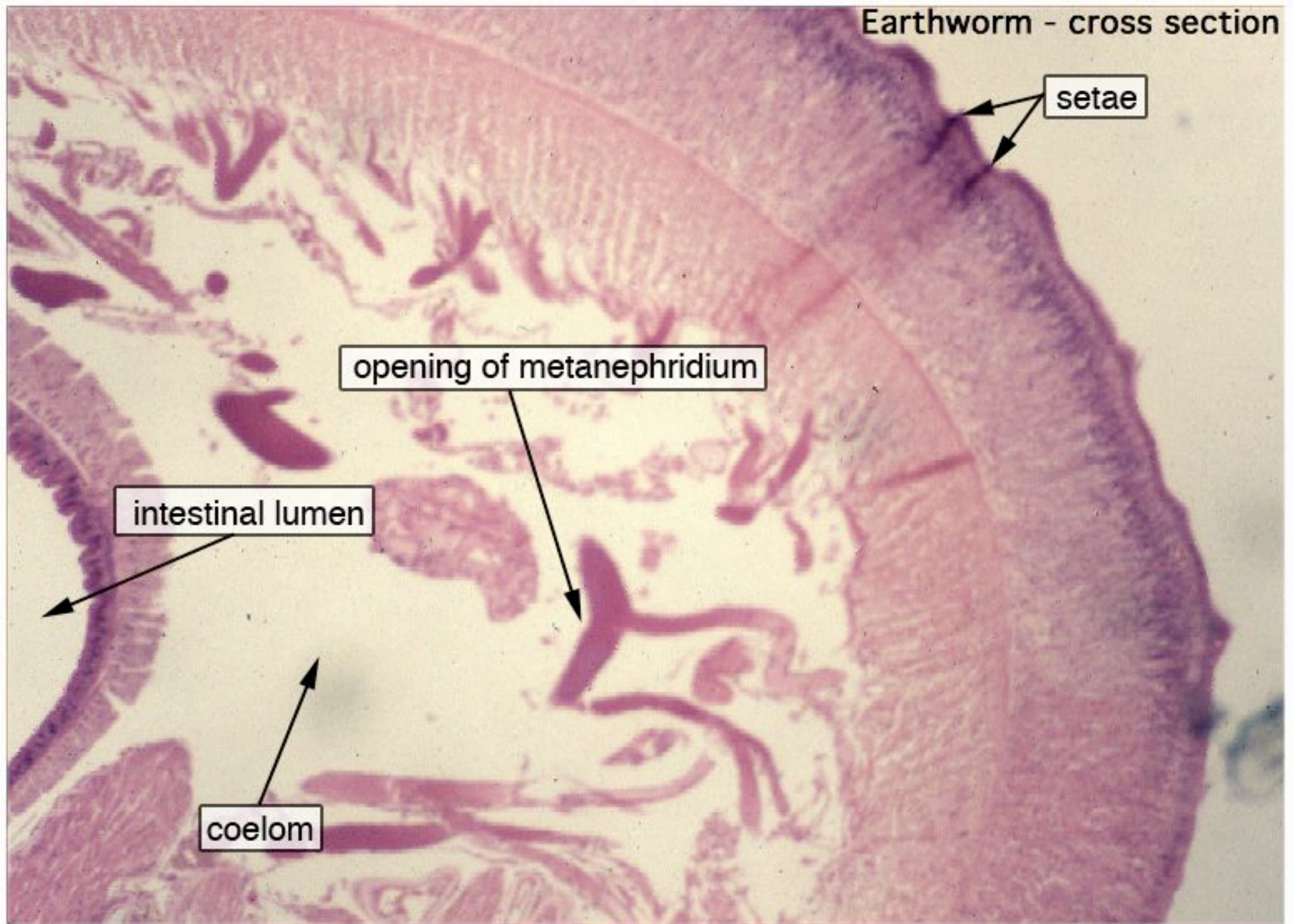
DBV

typhlosole

intestinal lumen



Earthworm - cross section

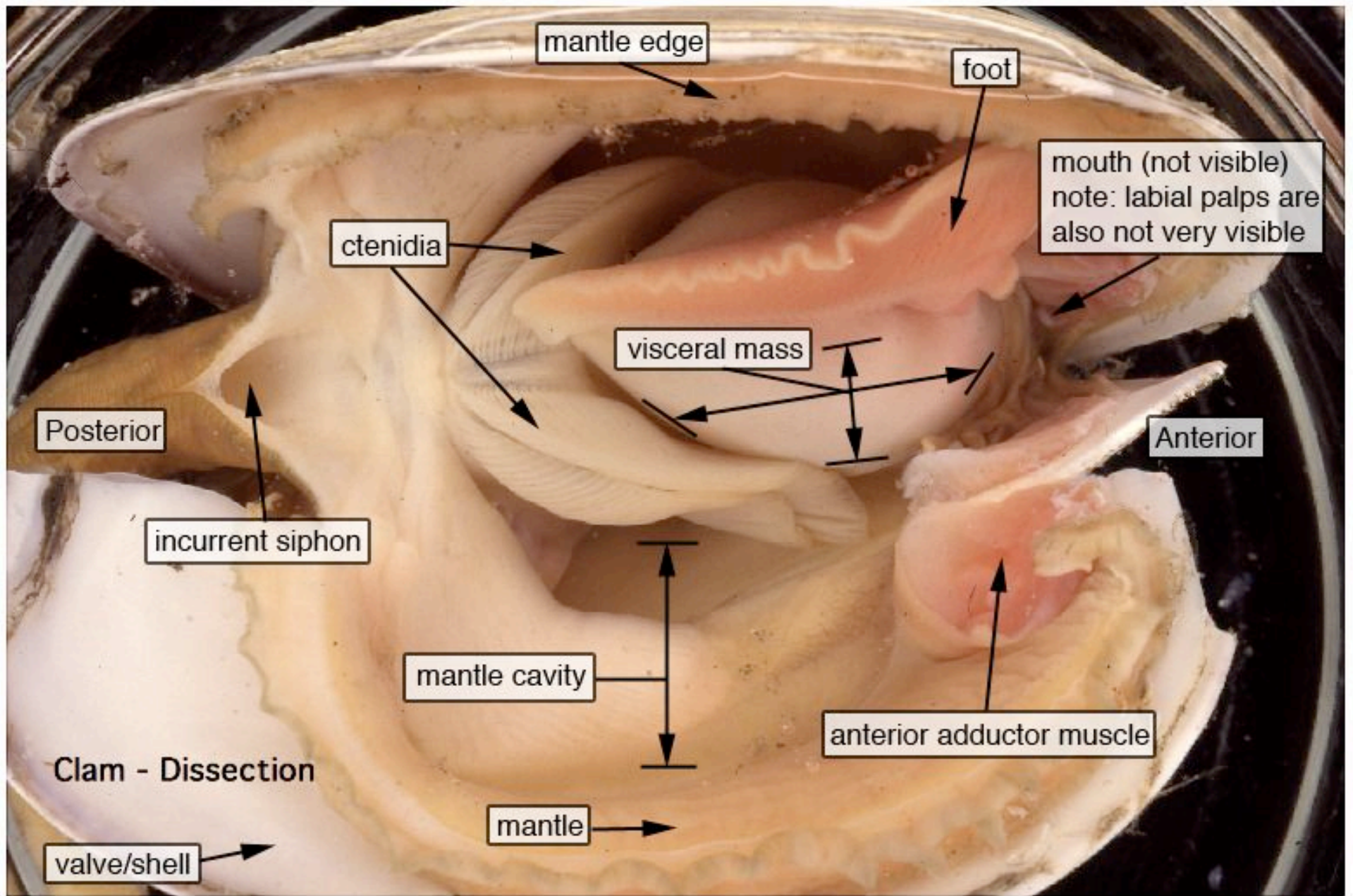


setae

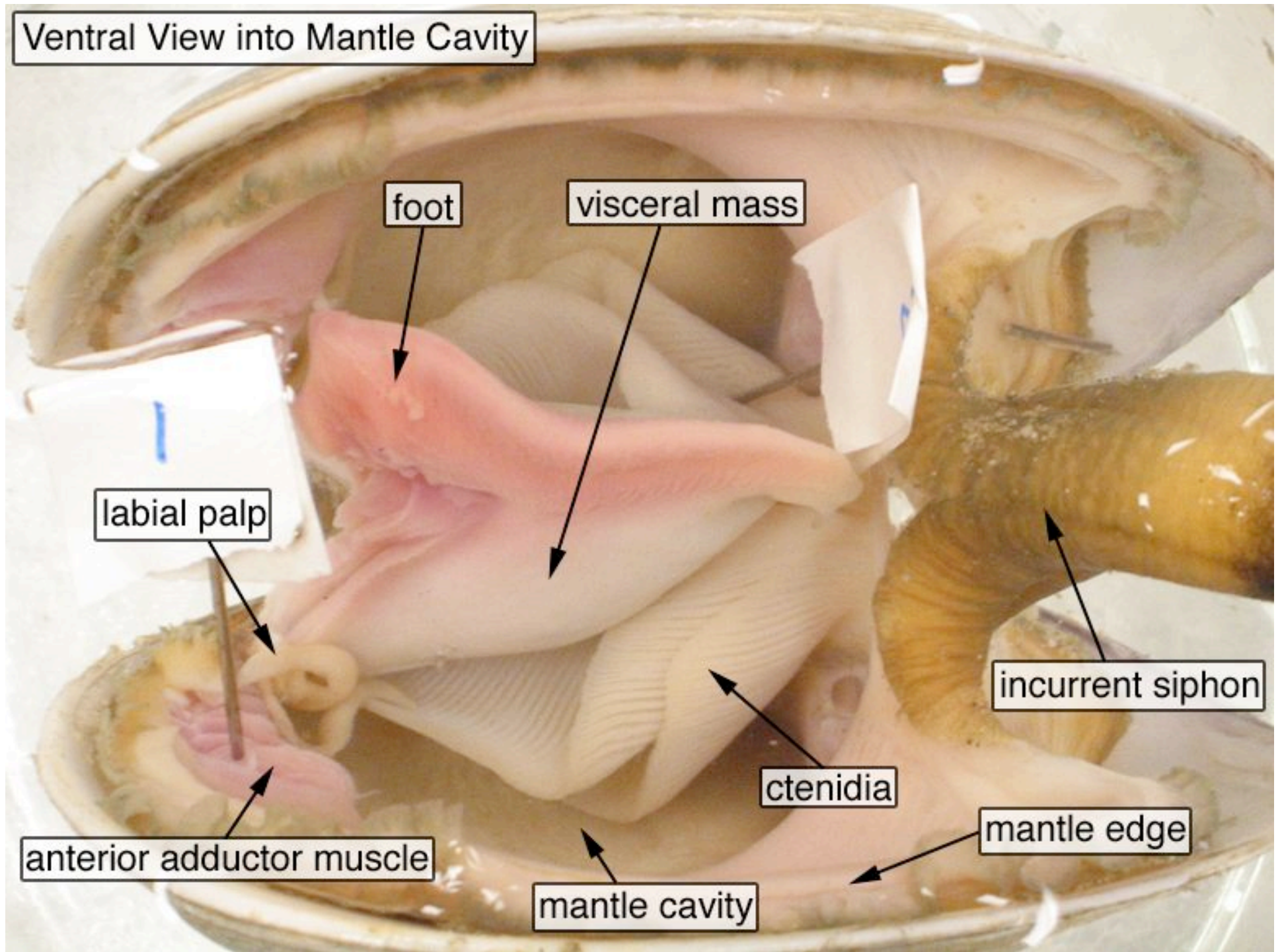
opening of metanephridium

intestinal lumen

coelom



Ventral View into Mantle Cavity



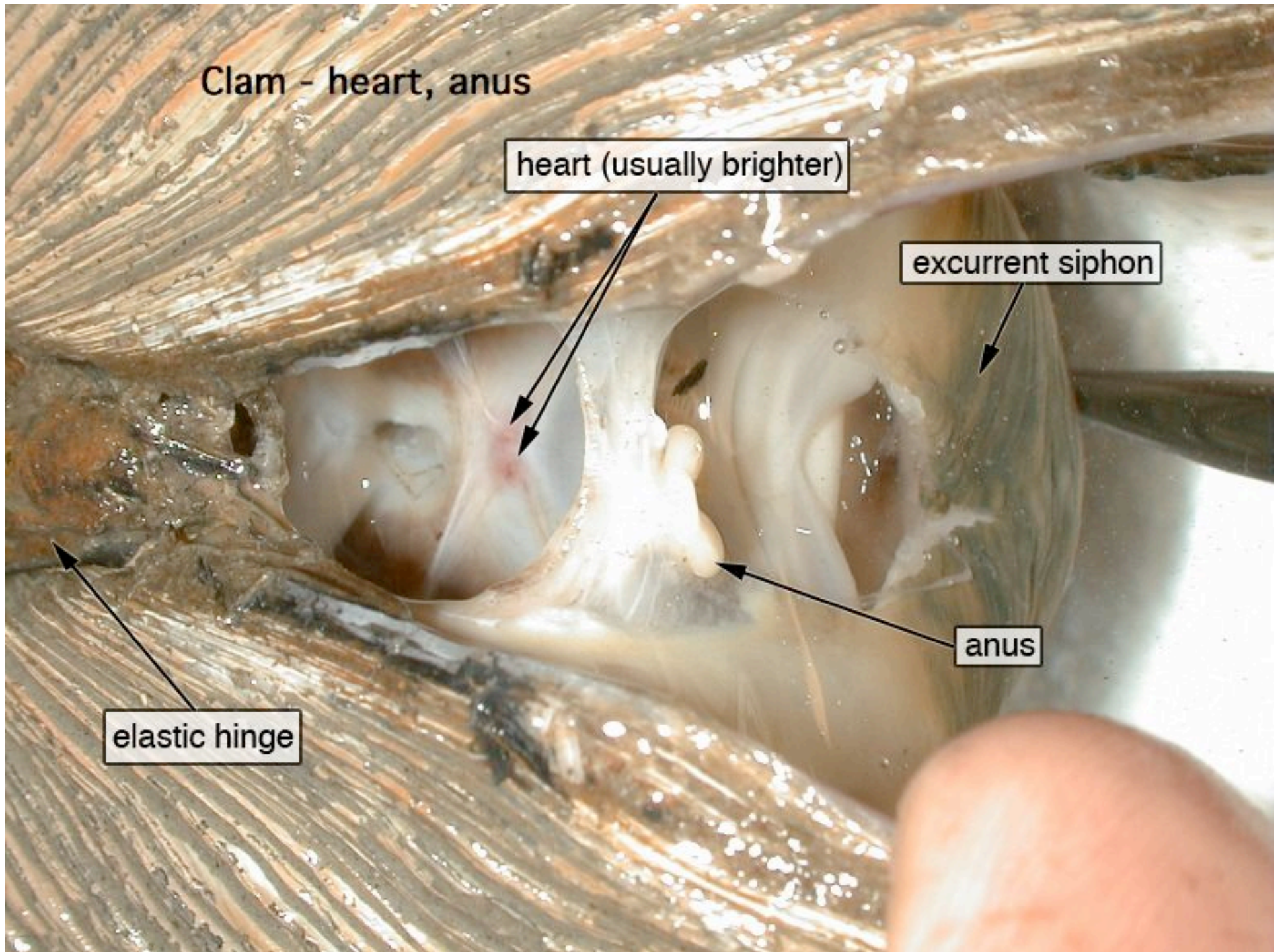
Clam - heart, anus

heart (usually brighter)

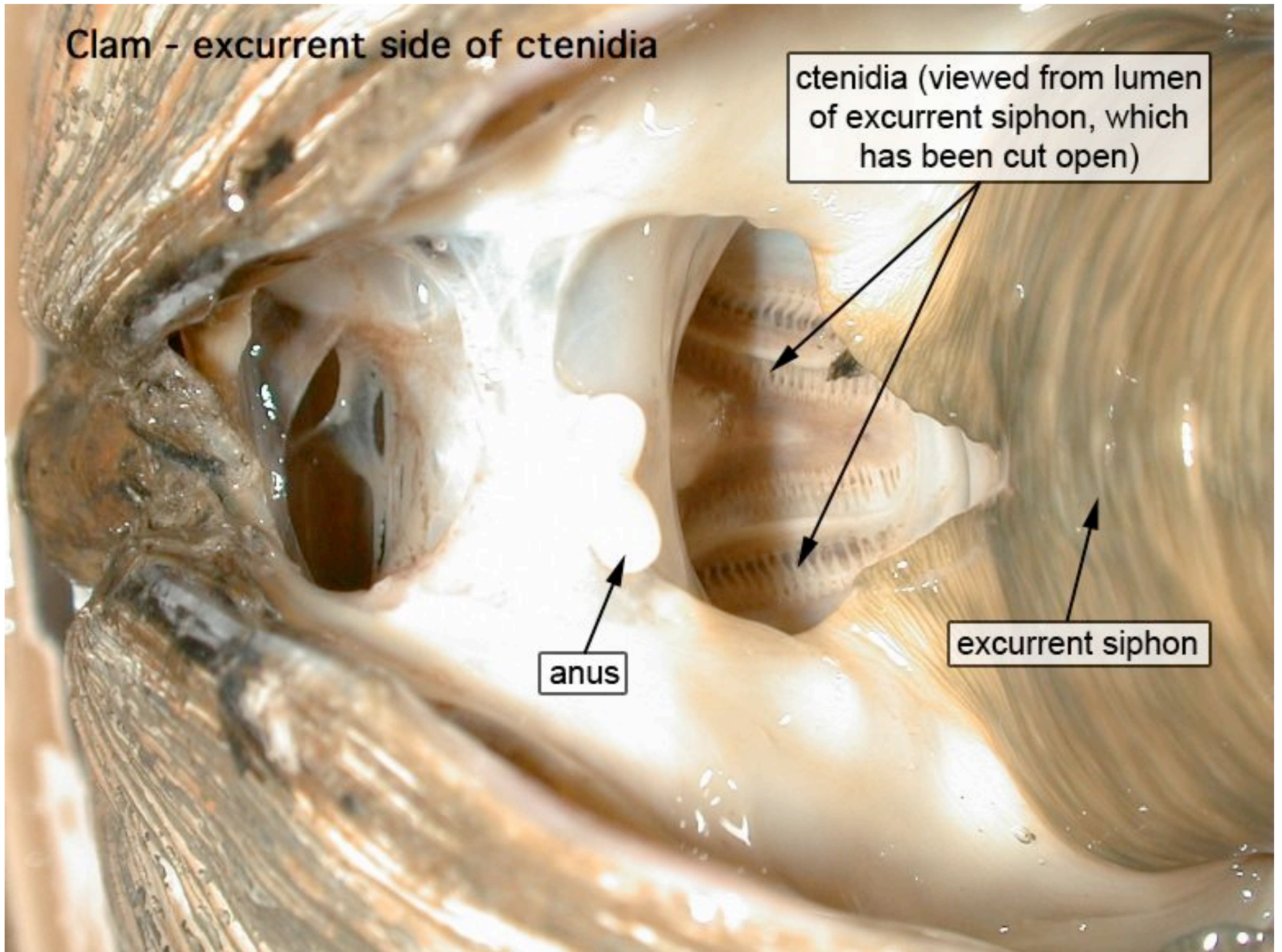
excurrent siphon

anus

elastic hinge



Clam - excurrent side of ctenidia



ctenidia (viewed from lumen of excurrent siphon, which has been cut open)

anus

excurrent siphon