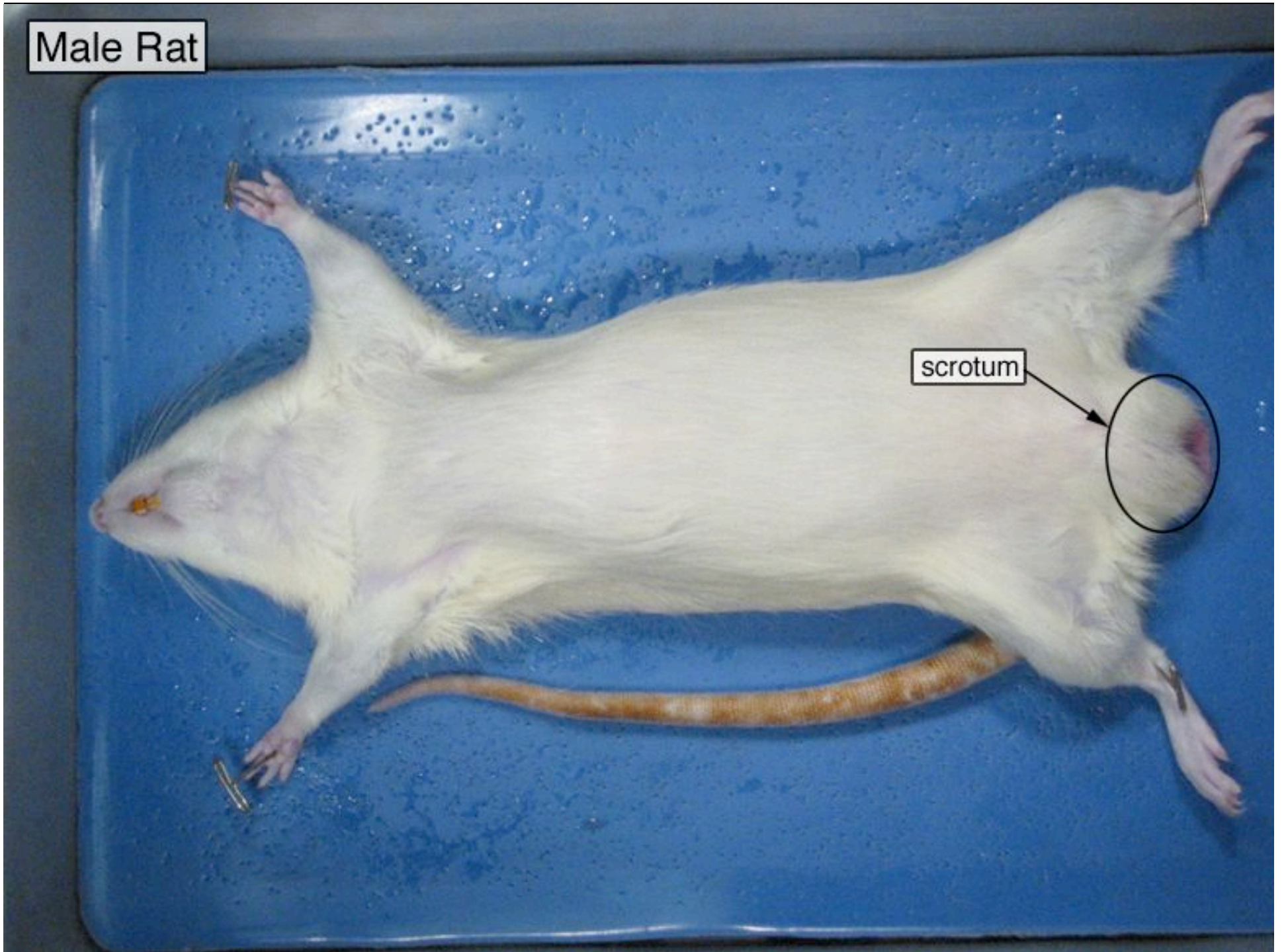
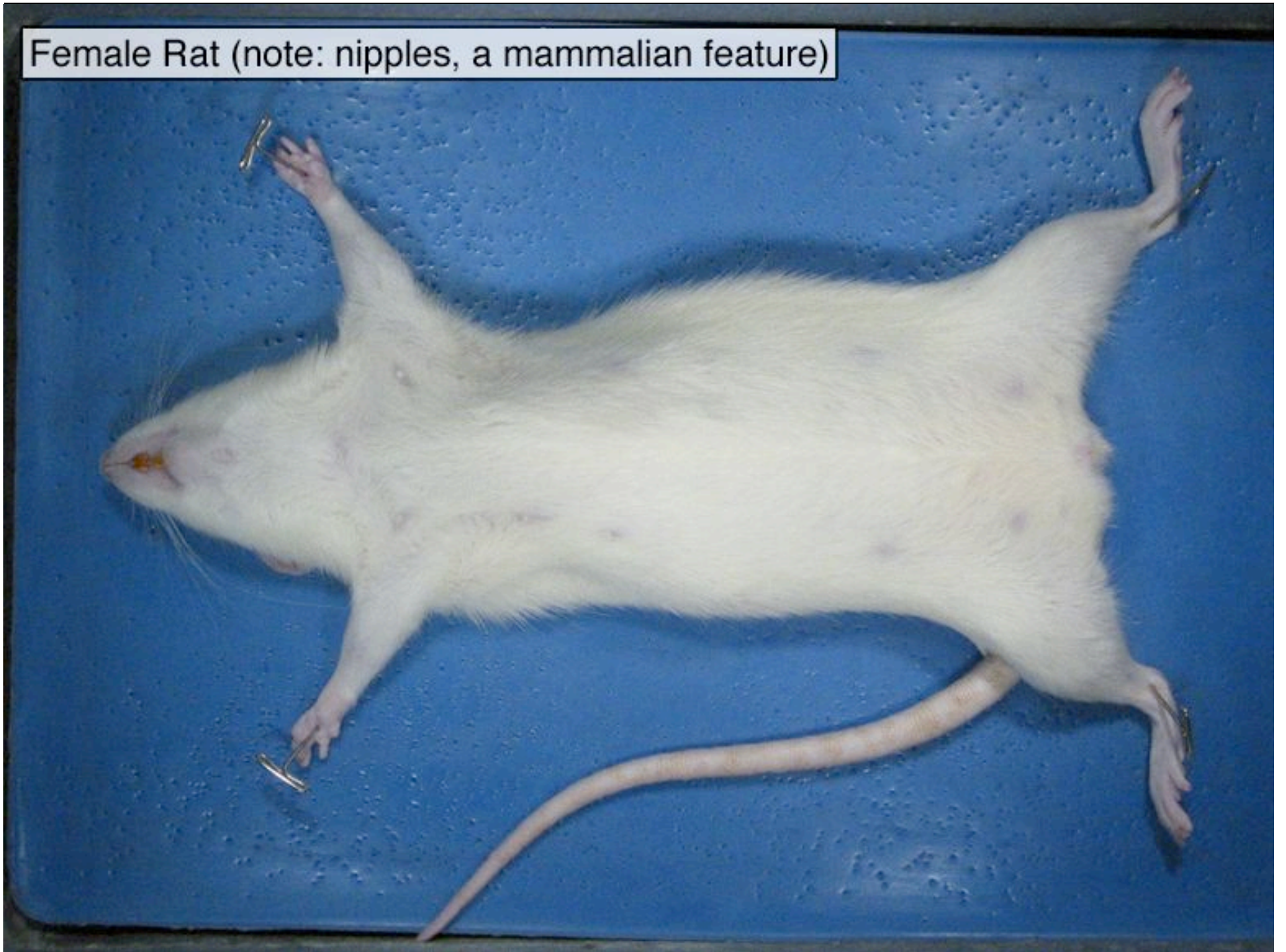


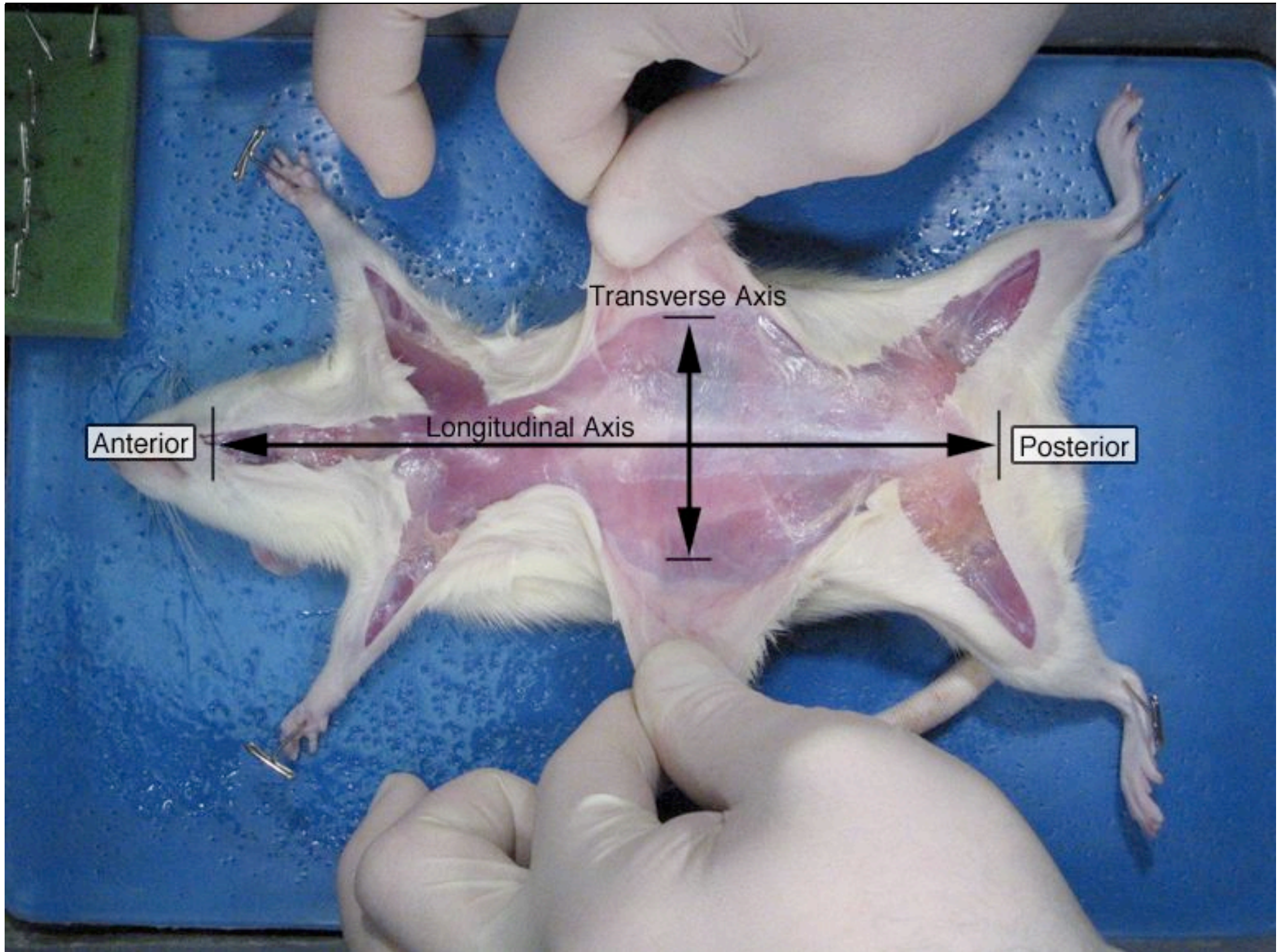
Male Rat

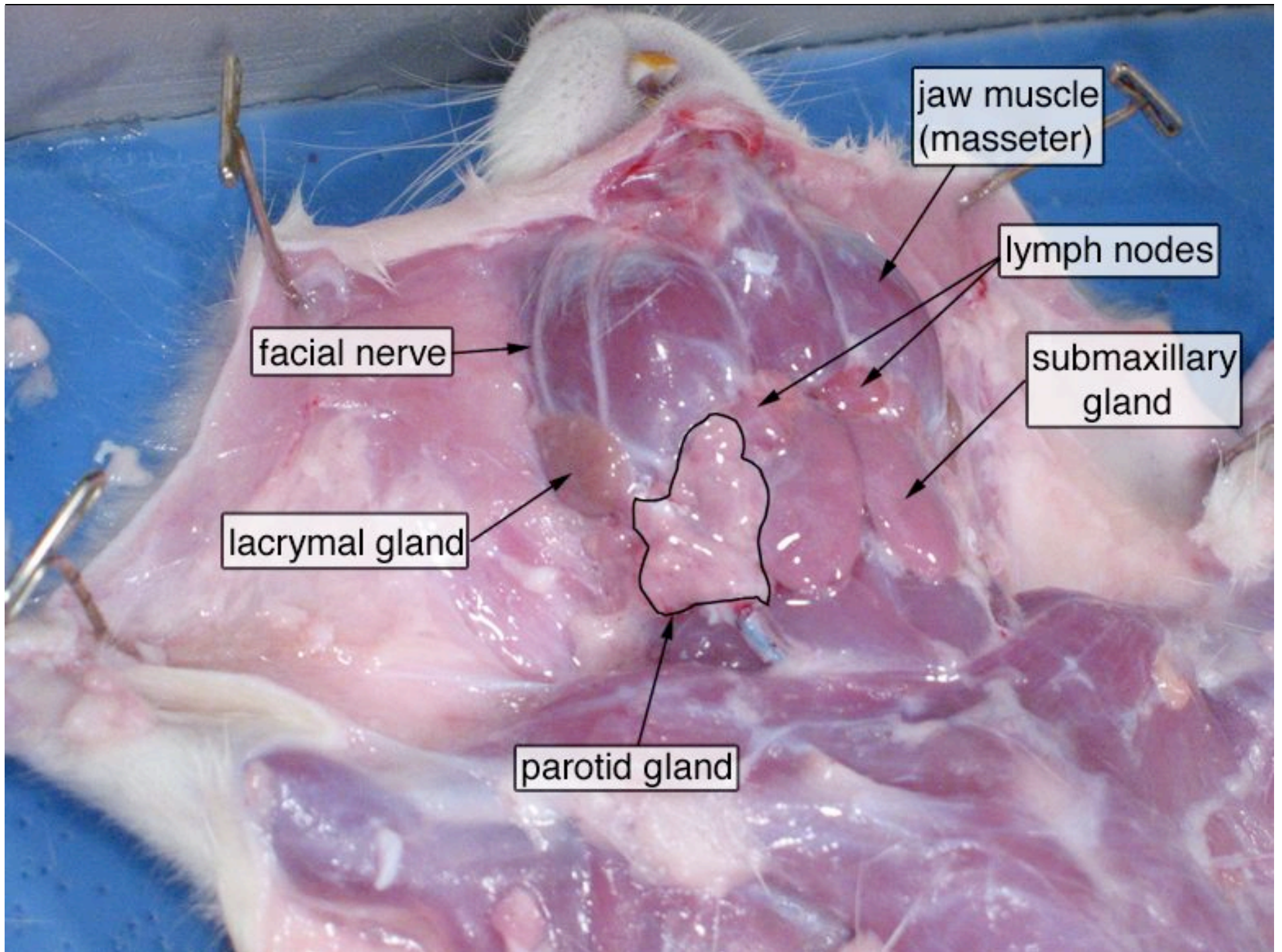
scrotum

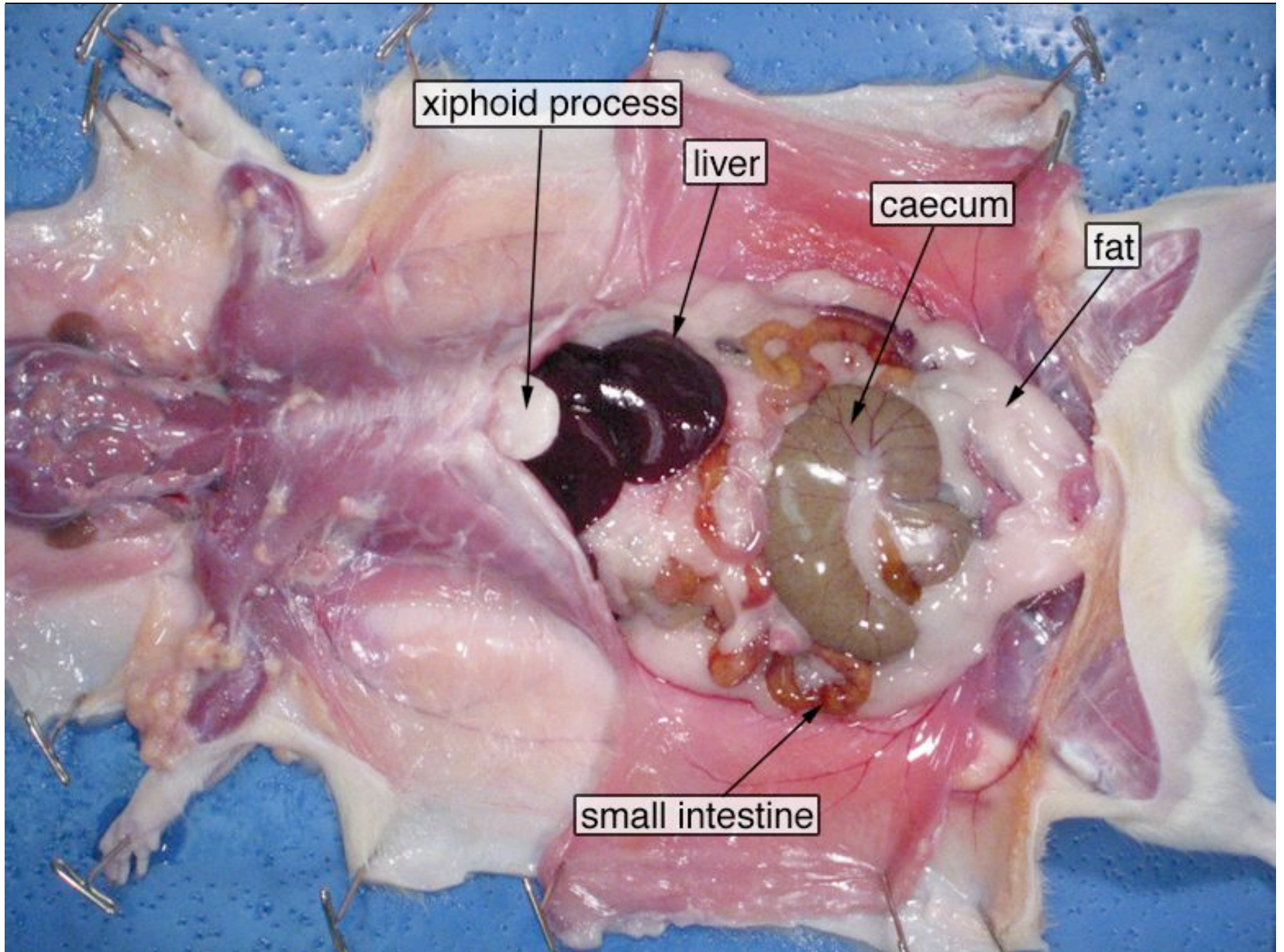


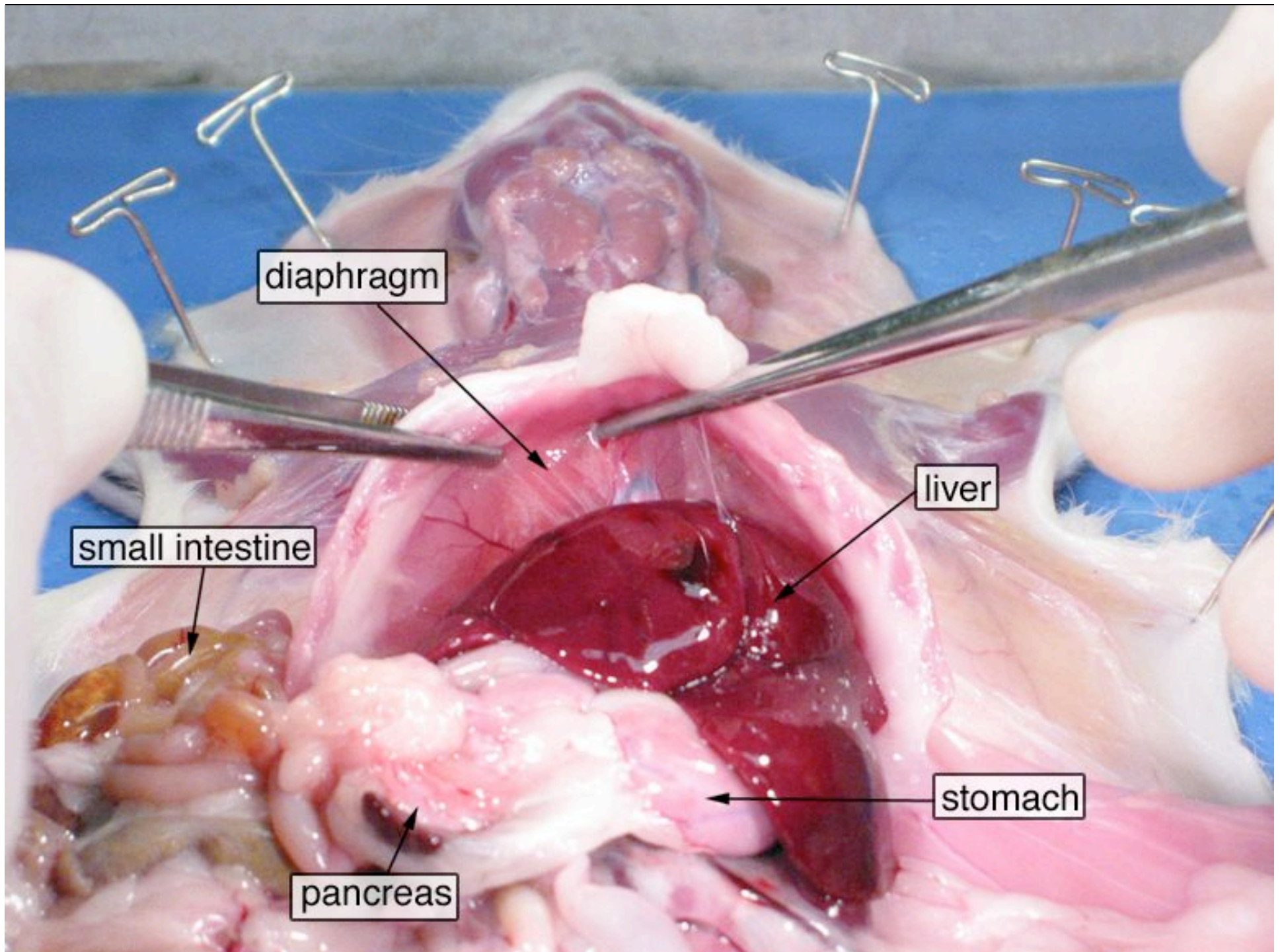
Female Rat (note: nipples, a mammalian feature)

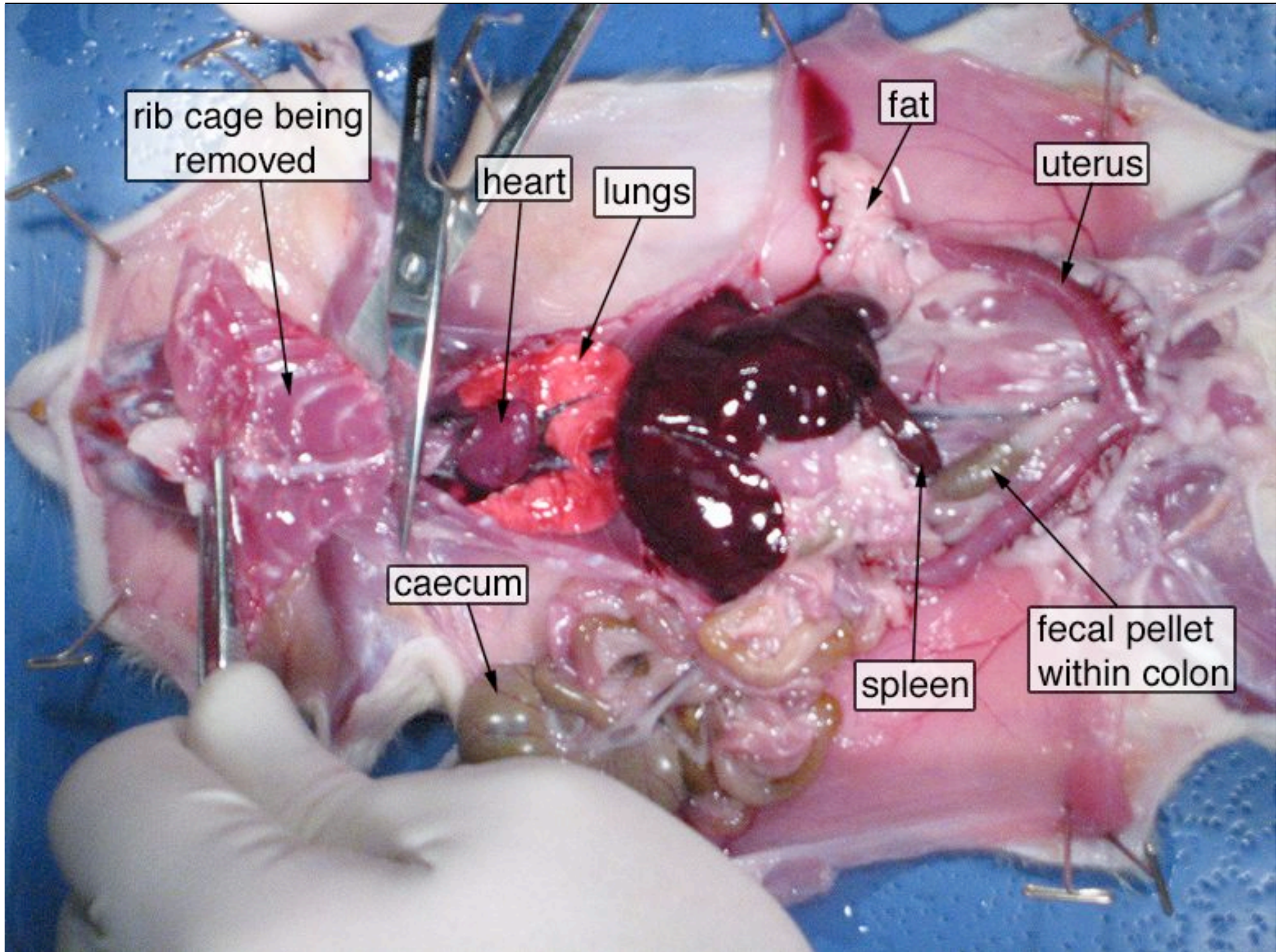


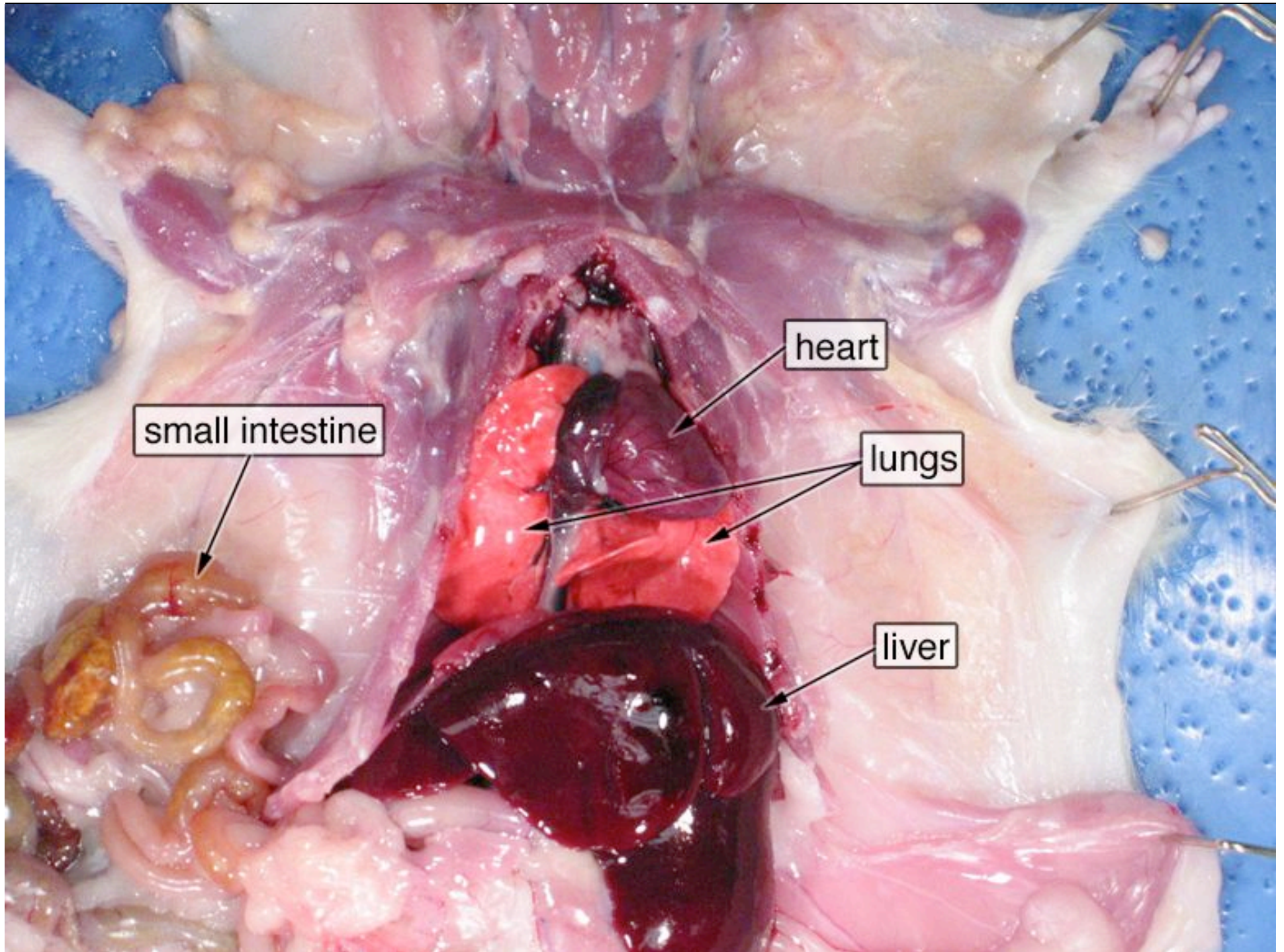










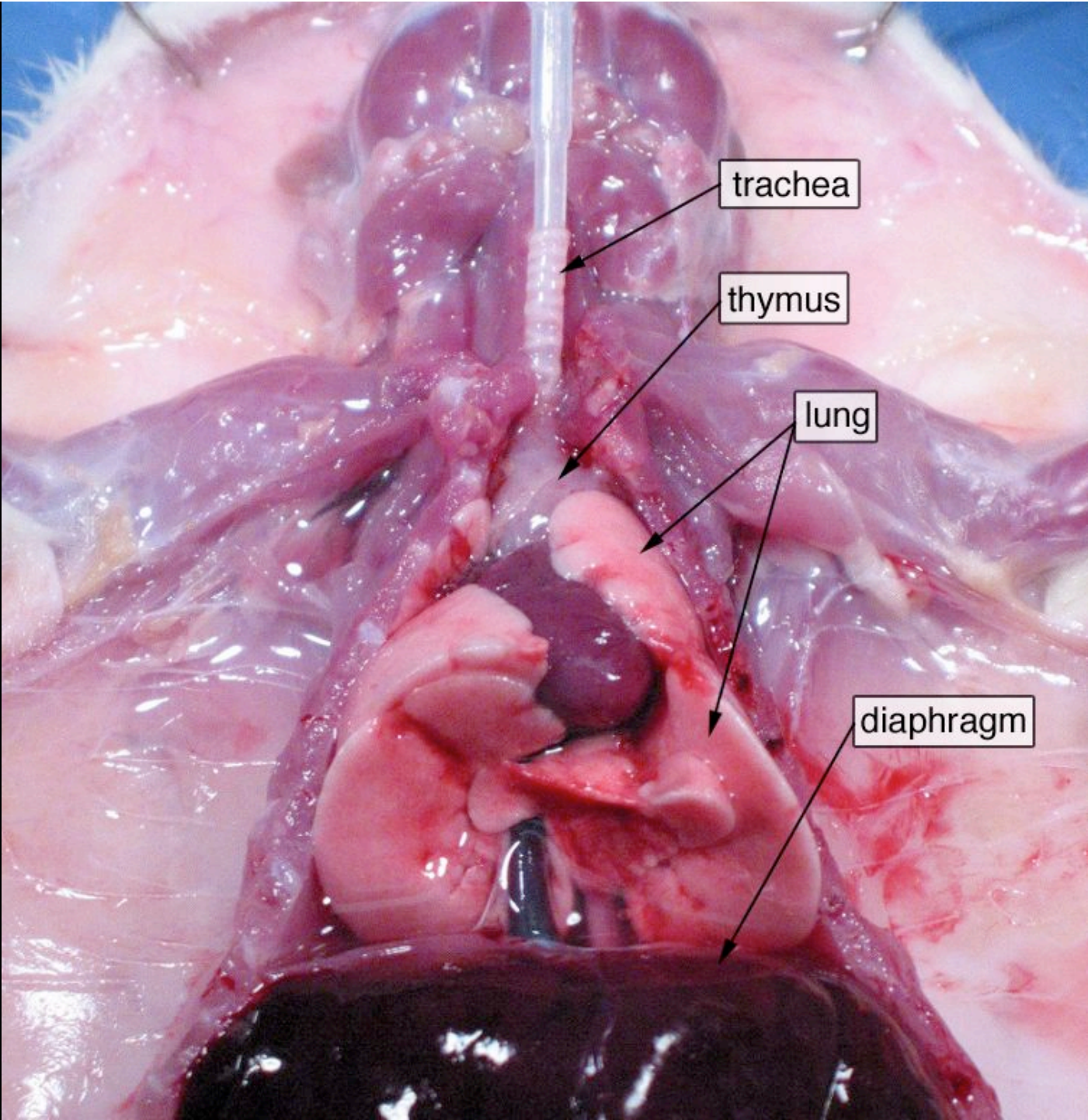


small intestine

heart

lungs

liver

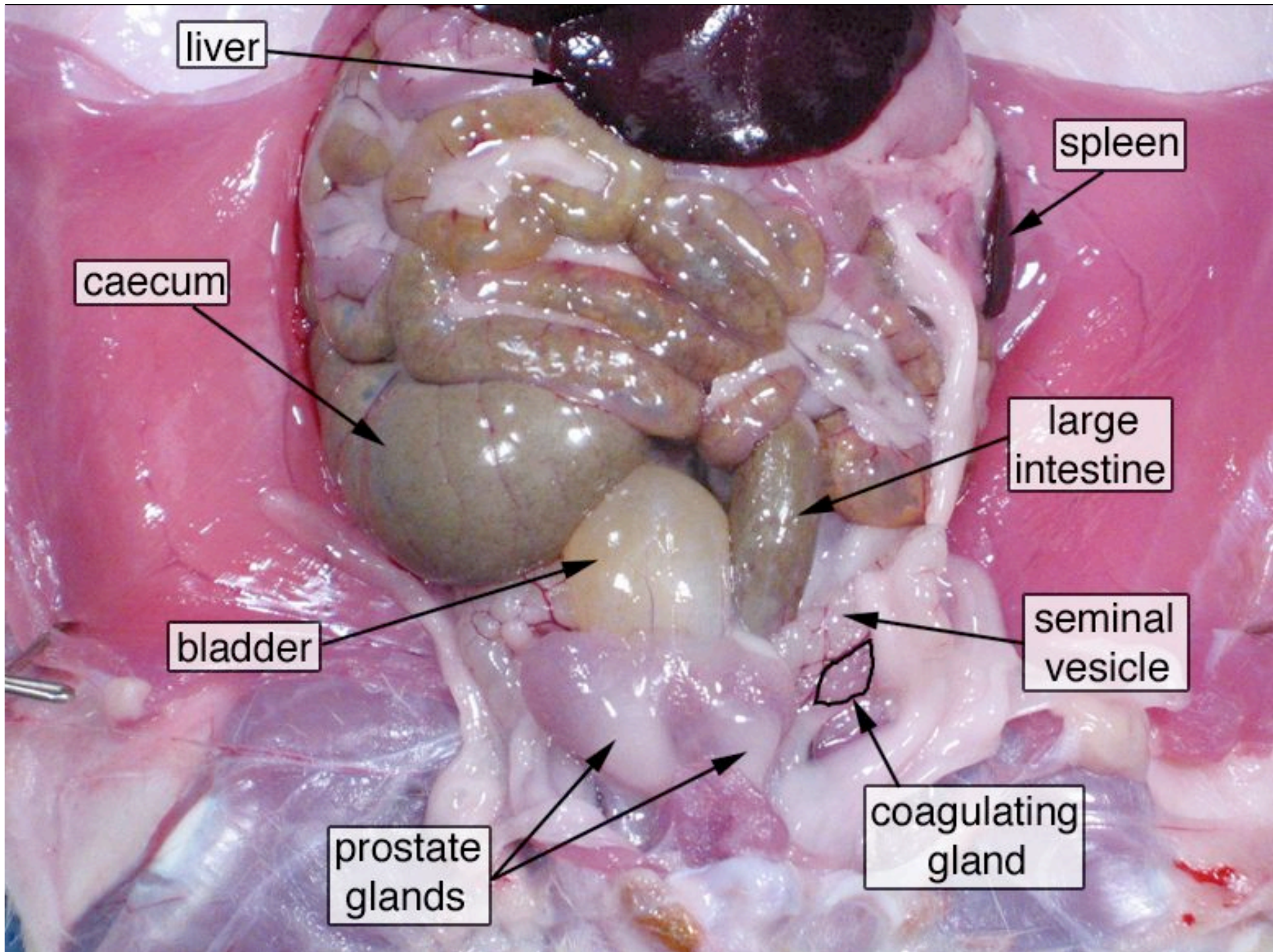


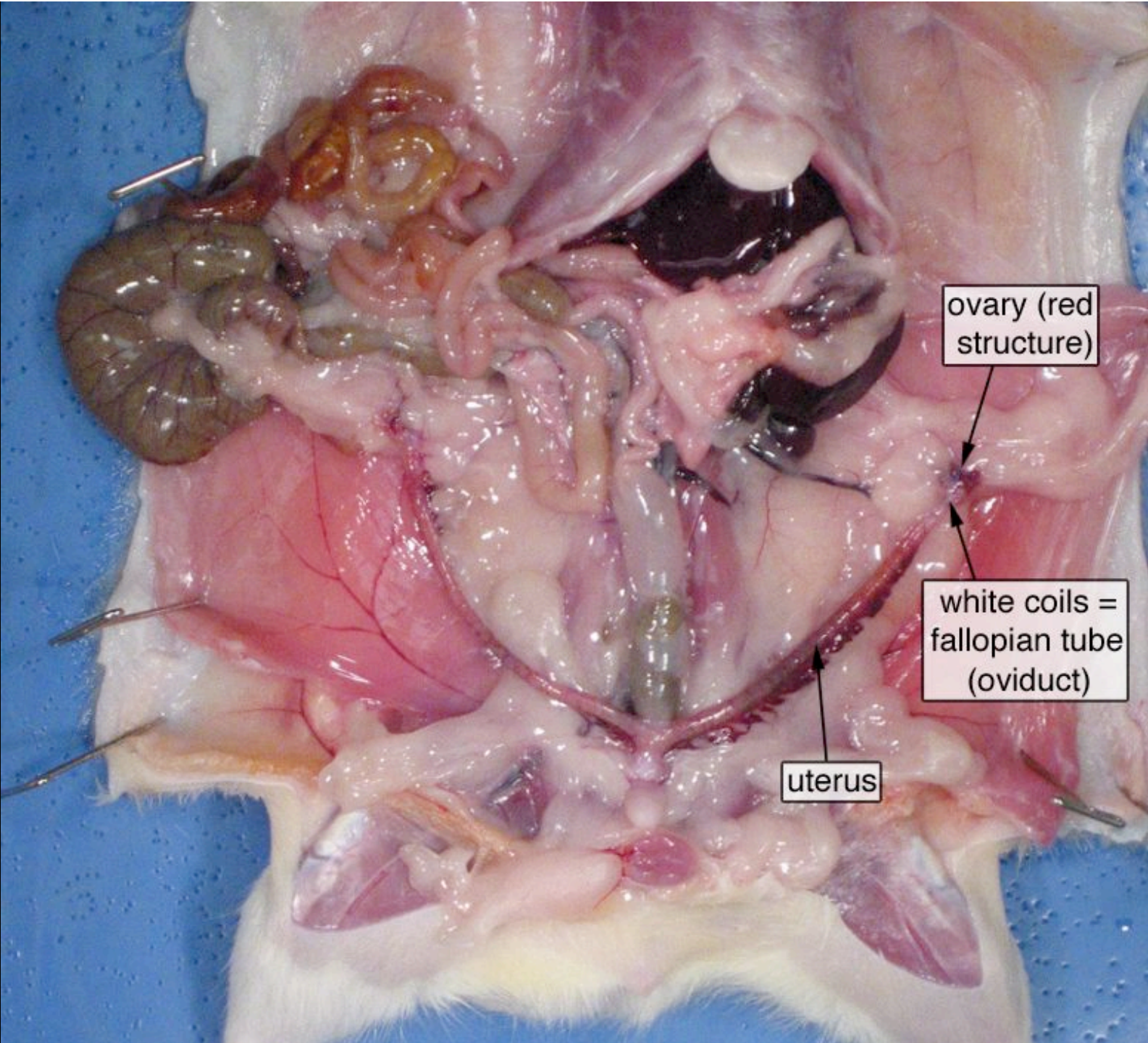
trachea

thymus

lung

diaphragm

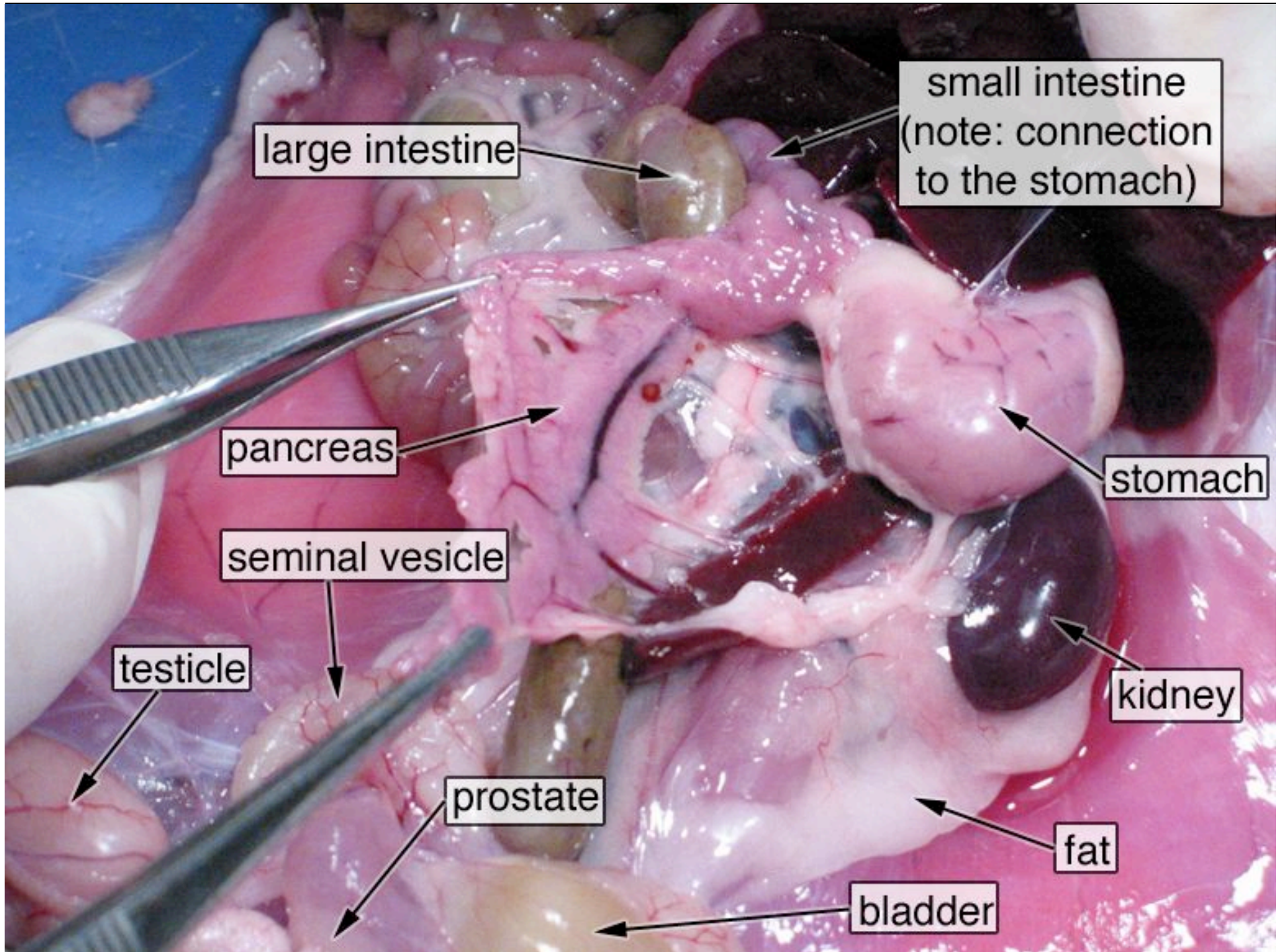


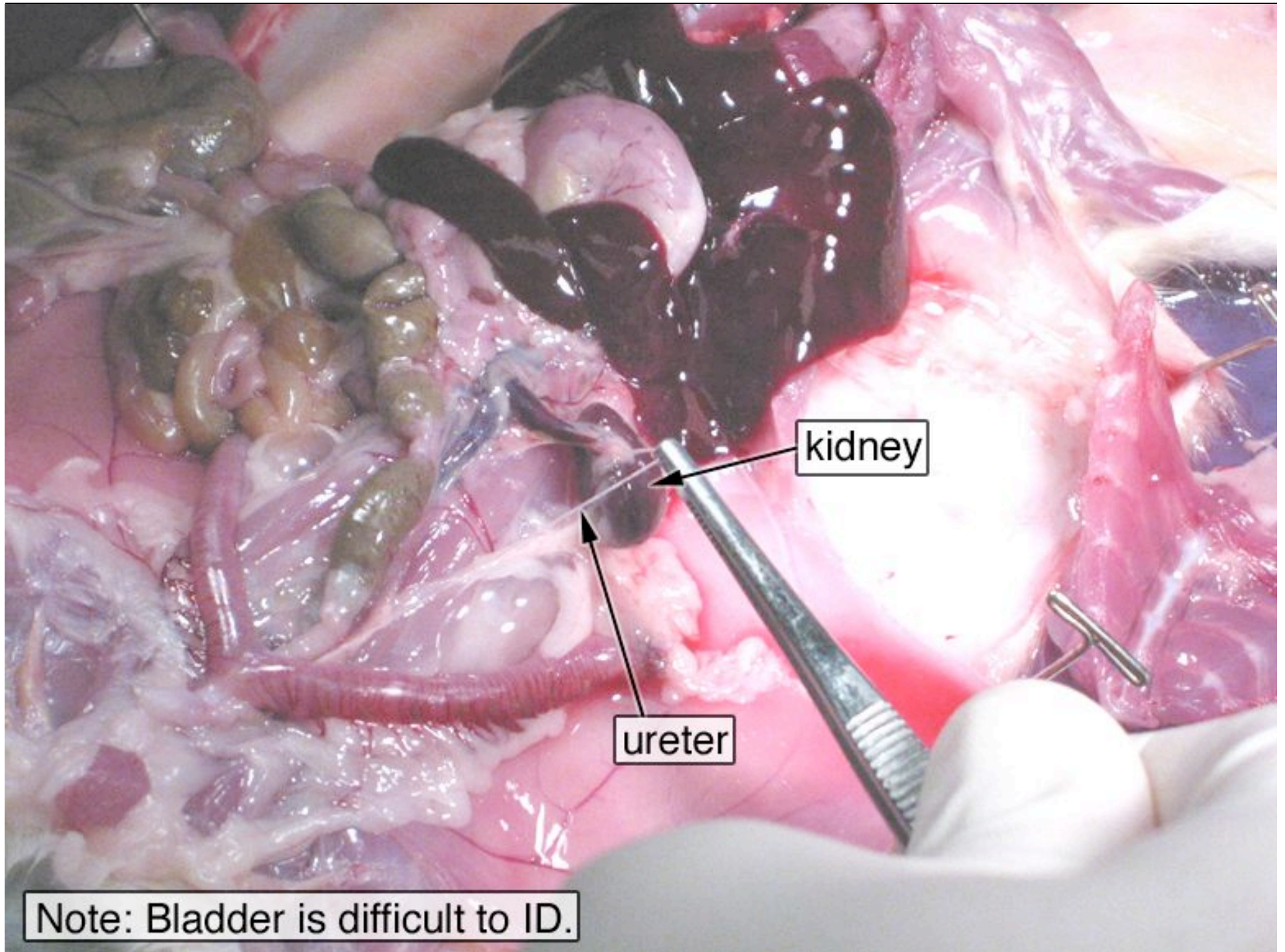


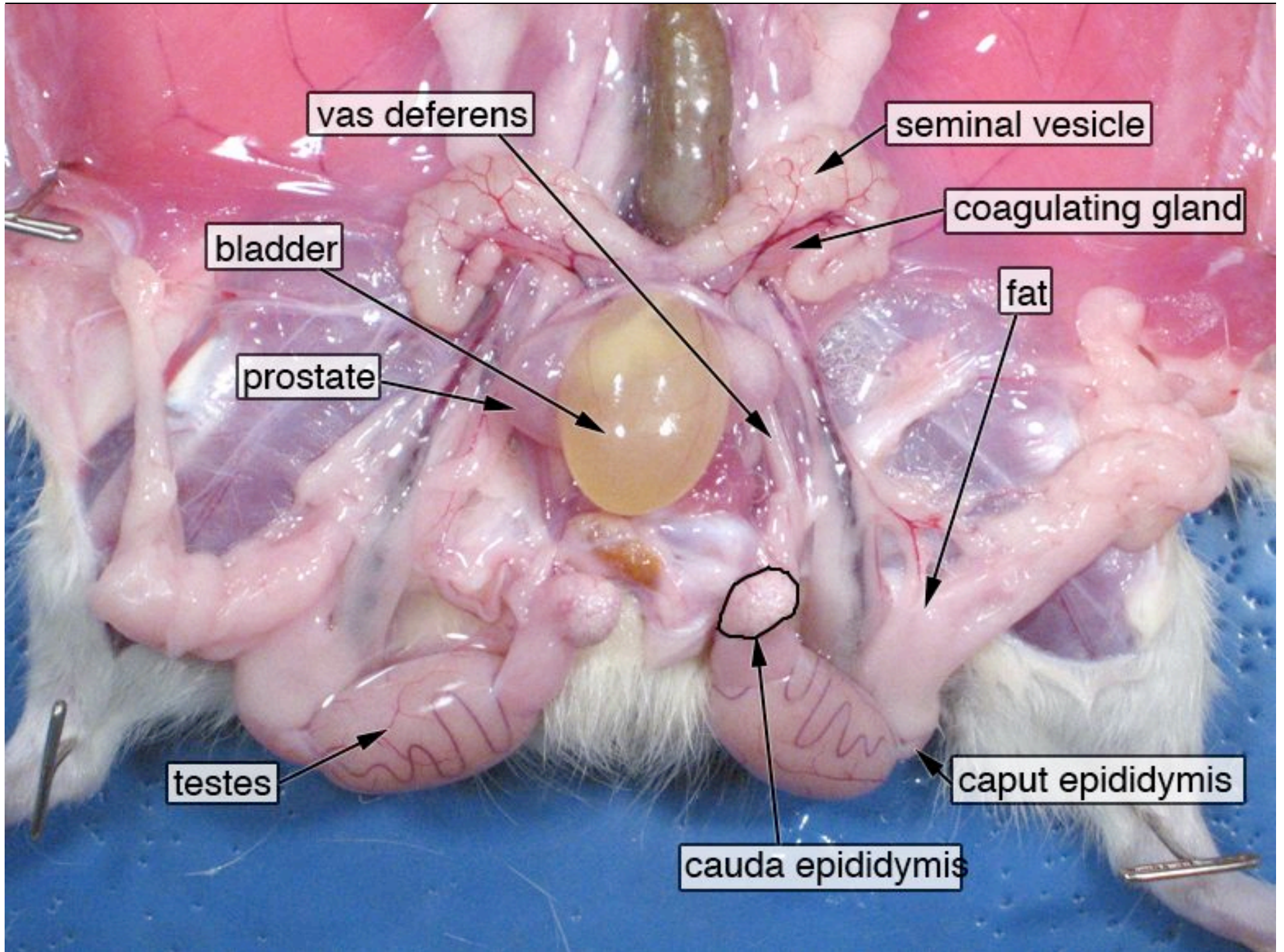
ovary (red structure)

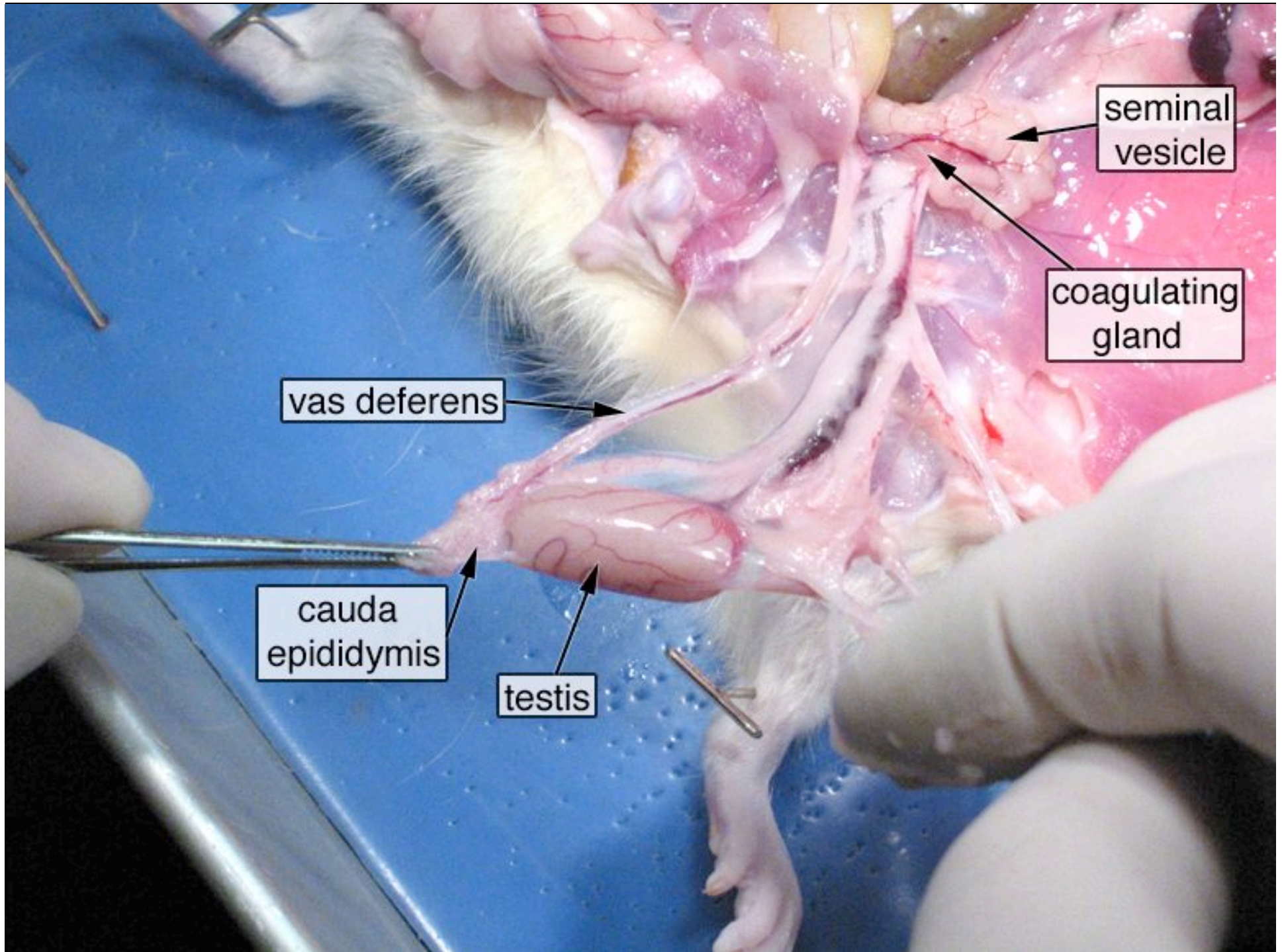
white coils = fallopian tube (oviduct)

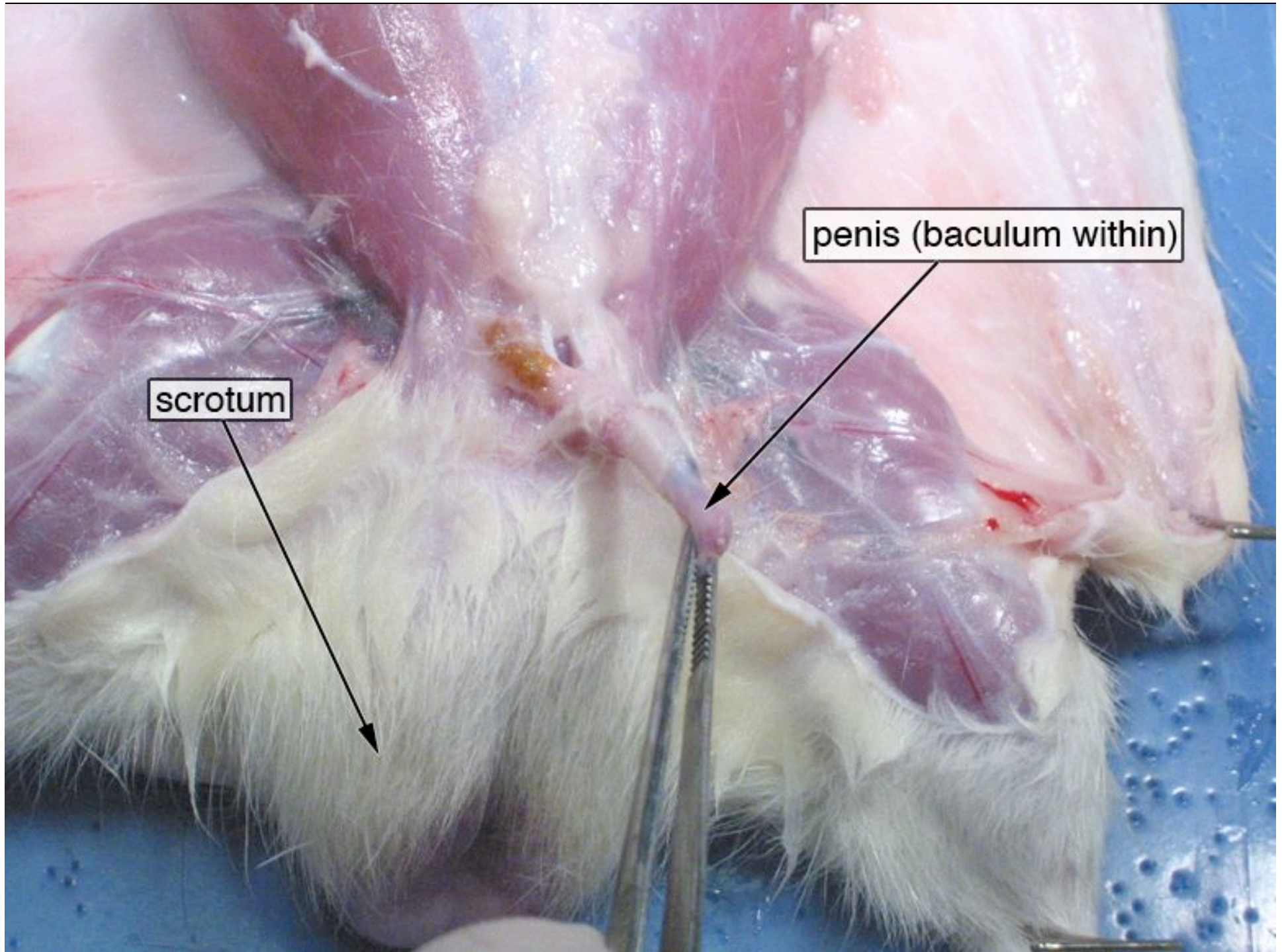
uterus





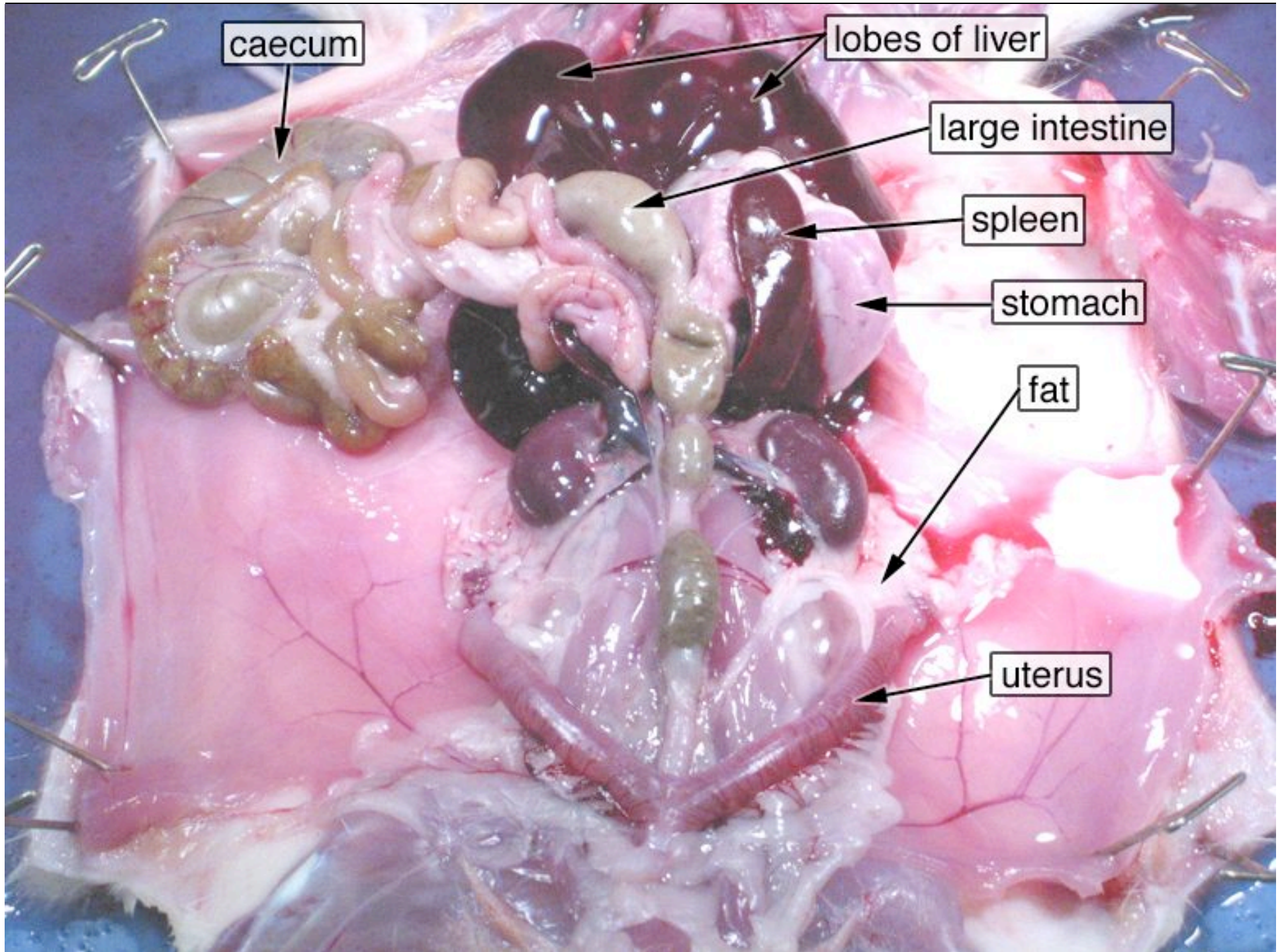


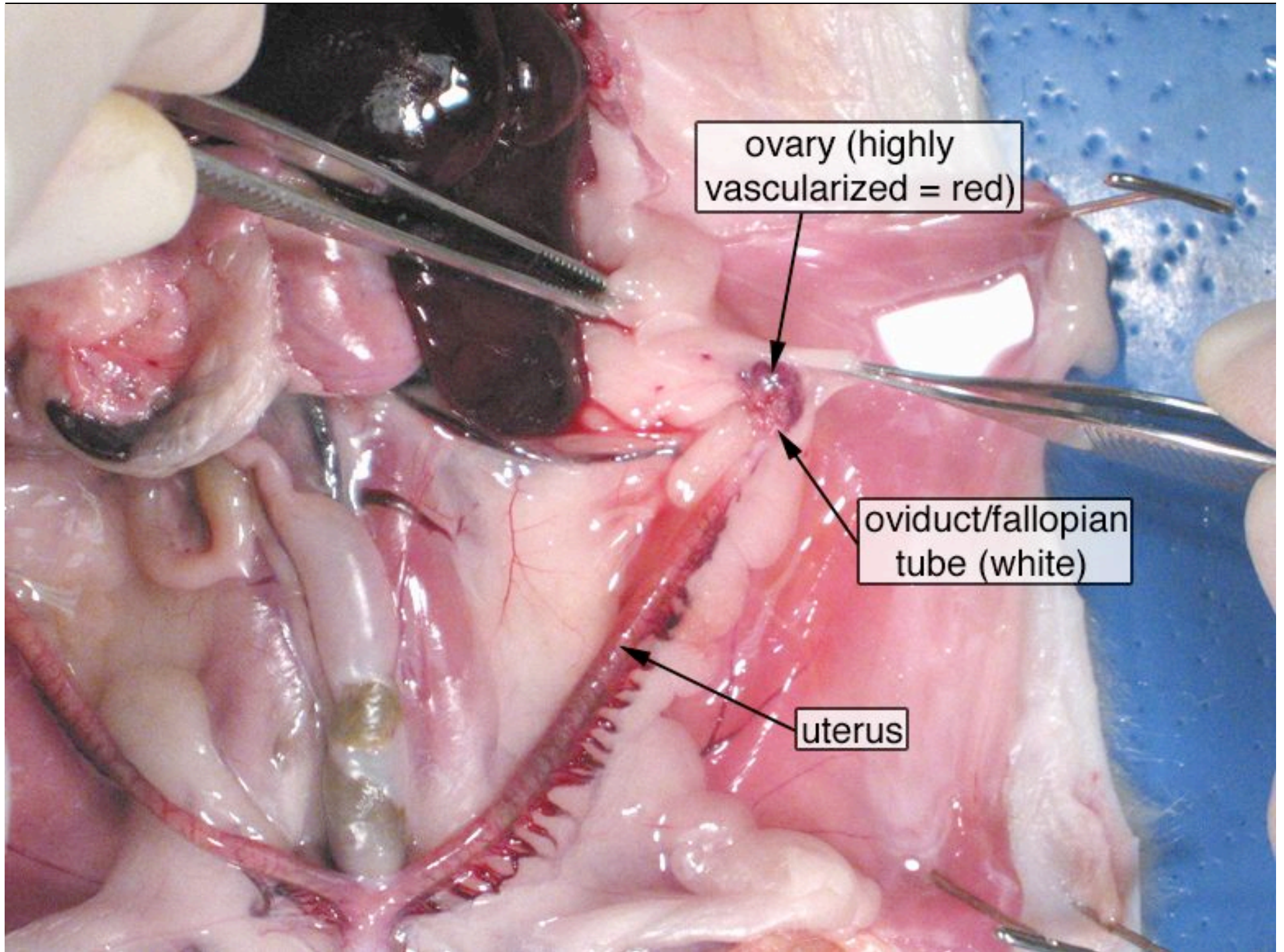




scrotum

penis (baculum within)

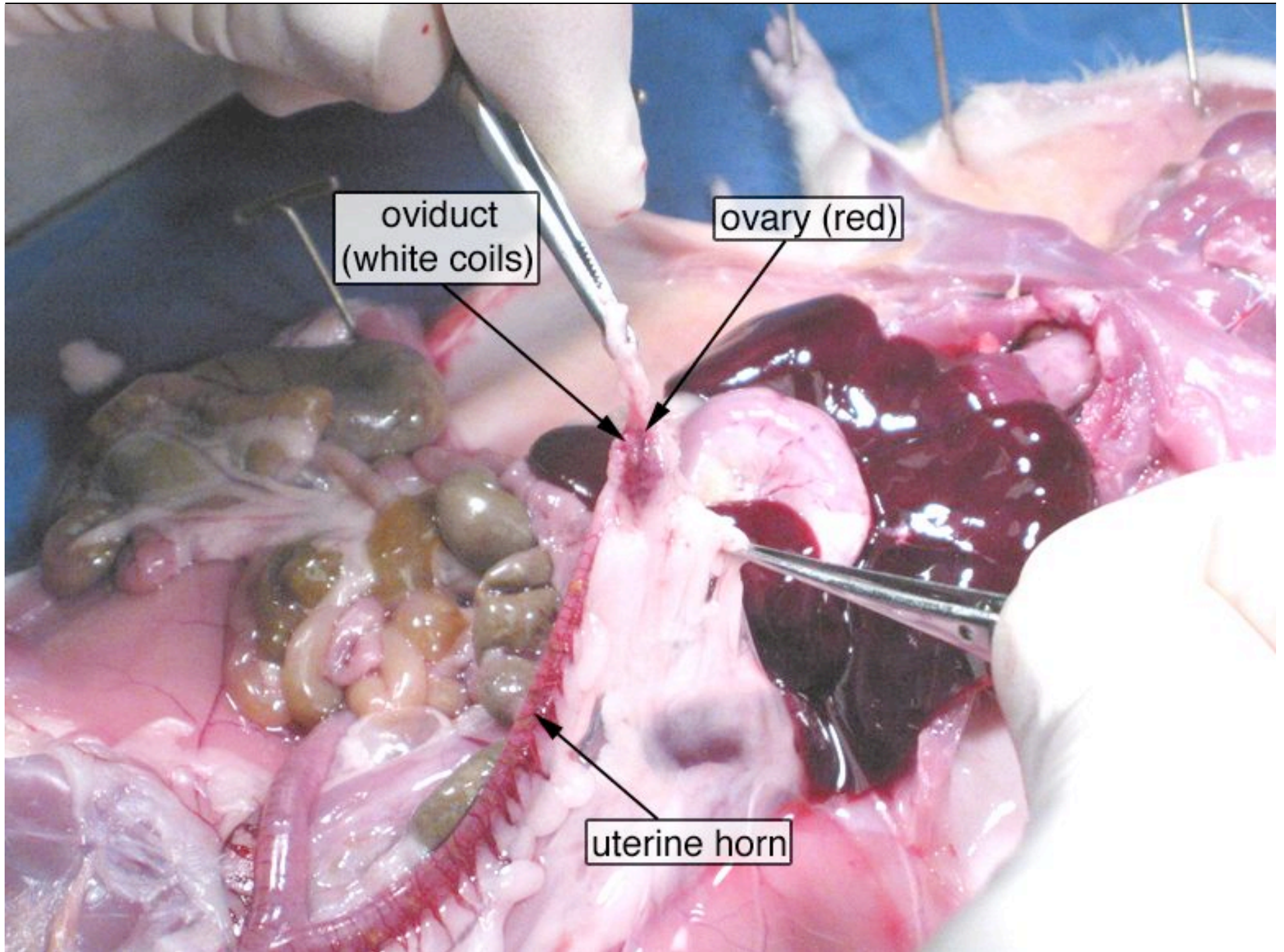




ovary (highly vascularized = red)

oviduct/fallopian tube (white)

uterus



oviduct
(white coils)

ovary (red)

uterine horn