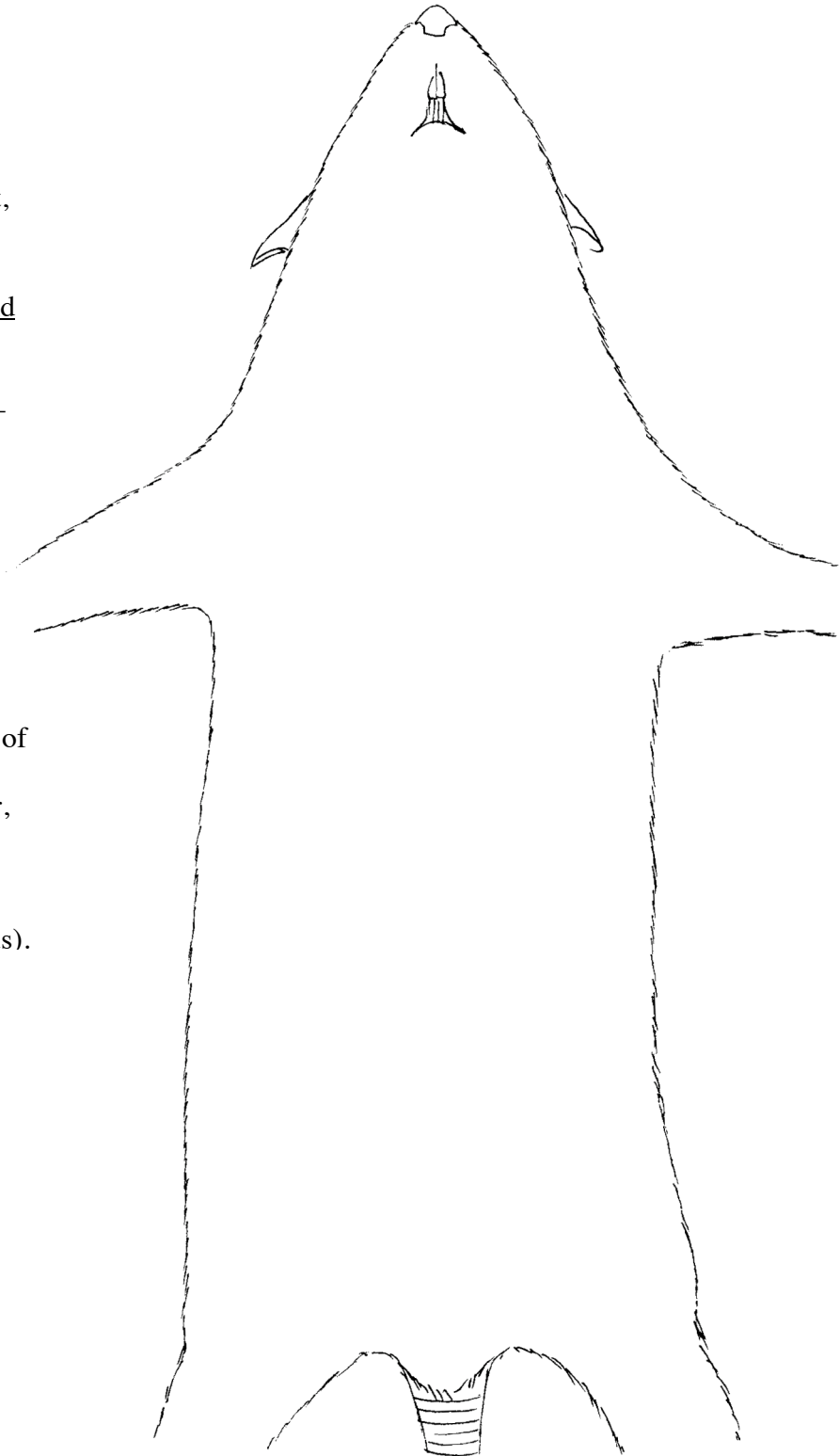


Neck region: Draw and label-- parotid, tear, and submaxillary glands, lymph nodes, parotid duct, facial nerve.

Combined Respiratory and Circulatory Systems:

Draw and label-- lungs, trachea, diaphragm, heart-- including flow of blood : right and left ventricles, aorta, vena cava (look at the heart model).

Abdominal cavity: Draw and label— spleen, mesentery, adrenal gland. Label the following parts of the digestive system: esophagus, stomach, liver, pancreas, small intestine (duodenum, jejunum, ileum), large intestine (caecum, rectum, and anus).



Urogenital system of a male rat. Draw and label: kidney, ureter, bladder, penis, scrotum, vas deferens, seminal vesicle, coagulating gland, prostate gland.

Urogenital system of a female rat. Draw and label: kidney, ureter, bladder, ovaries, oviduct, uterus.