

Name _____

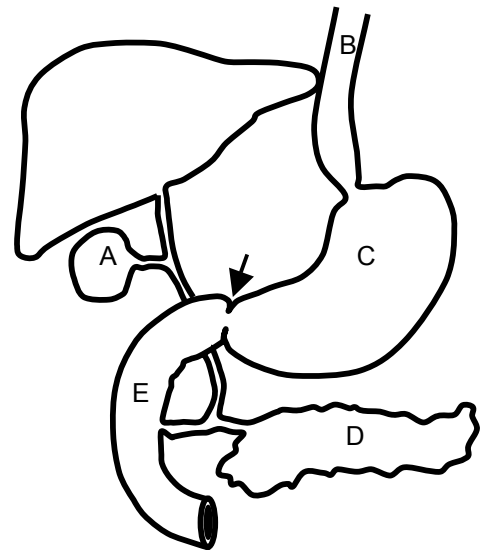
Section # _____

Quiz D. Each question is worth 2 pts unless indicated otherwise.

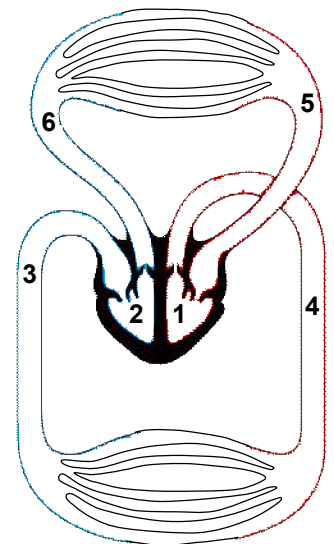
Key: 1D, 2E, 3A, 4B, 5D, 6B, 7C, 8C, 9E, 10 C, 11 A, 12 A, 13 B, 14 C.

The following questions refer to the diagram. Each question is worth 1 point. Bubble in the correct answer on your scantron. Answers may be used more than once, or not at all.

- 1) It secretes procarboxypeptidase _____
- 2) It secretes cholecystokinin (CCK) _____
- 3) After surgical removal of _____, one must be careful to avoid meals high in fats.
- 4) Specific Na-dependent intestinal uptake occurs for
 - A. fructose
 - B. glucose
 - C. dipeptides
 - D. fatty acids
 - E. all of the above
- 5) We can find epithelial cells in all of the following except
 - A. esophagus
 - B. trachea
 - C. alveolus
 - D. intestinal smooth muscle
 - E. liver



- 6) How many organ systems make up your body?
 - A. four
 - B. 11
 - C. 29
 - D. hundreds
 - E. It depends on the size of the person.



- 7) What is the *correct* sequence of blood flow, beginning at the pulmonary vein?
 - A. 2-1-4-systemic capillaries-3-5-6
 - B. 5-6-3-2-1-4
 - C. 5-1-4-systemic capillaries -3-2-6
 - D. 6-pulmonary capillaries -5-1-2-4-3
 - E. 5- pulmonary capillaries -6-2-3-1-4

- 8) Each heme group of hemoglobin contains a(n) _____ atom and can bind _____ oxygen molecule(s).
 - A. magnesium; four
 - B. iron; four
 - C. iron; one
 - D. magnesium; one

E. cobalt; one

Name _____

Section # _____

9) The contraction of which structure listed below creates the negative pressure needed for inhalation?

- A. Lungs
- B. Trachea
- C. Larynx
- D. Bronchus
- E. Diaphragm

10) All gas exchange between air and blood in mammals occurs across the walls of the

- A. trachea
- B. bronchi
- C. alveoli
- D. bronchioles
- E. epiglottis

11) Most oxygen is carried by the blood _____. Most carbon dioxide is carried by the blood _____.

- A. attached to hemoglobin . . . in the form of bicarbonate ions
- B. dissolved in the plasma . . . dissolved in the plasma
- C. attached to hemoglobin . . . attached to hemoglobin
- D. attached to hemoglobin . . . dissolved in plasma
- E. In the form of H⁺ ions in the form of bicarbonate ions

12) The inflammatory response includes all of the following except

- A. vessel constriction
- B. temperature increase
- C. increased blood flow
- D. attraction of phagocytes
- E. local release of histamine

13) Which of the following cells would contain both MHC I and MHC II?

- A. basophils
- B. macrophages
- C. T helper cells
- D. red blood cells
- E. platelets

14) The primary site of lymphocyte production is _____.

- A. interstitial space
- B. thymus
- C. bone marrow
- D. thyroid gland
- E. blind ended capillaries