

Name _____

Section # _____

Quiz C. Each question is worth 2 pts unless indicated otherwise.

KEY 1E, 2A, 3C, 4 B, 5 E, 6 A, 7 D, 8 B, 9 D, 10 A, 11 E, 12 B, 13 A, 14 E.

The following questions refer to the diagram. Each question is worth 1 point. Bubble in the correct answer on your scantron. Answers may be used more than once, or not at all.

1) It secretes secretin. _____

2) It stores bile. _____

3 Contains chief cells _____

4) Most absorption of nutrients in the digestive tract is in the:

- A. stomach.
- B. small intestine.
- C. large intestine.
- D. liver.
- E. colon.

5) Epithelia serve a role in:

- A. exchange
- B. transport
- C. protection
- D. secretion
- E. all of the above

6) Which of the following is not a part of the lymphatic/immune system?

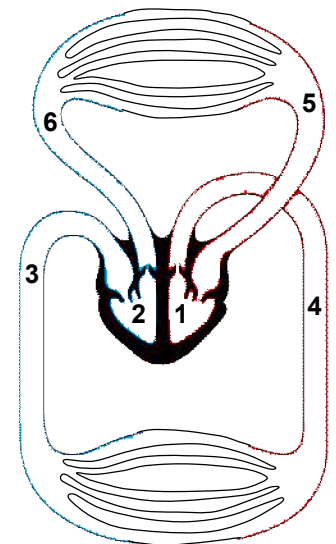
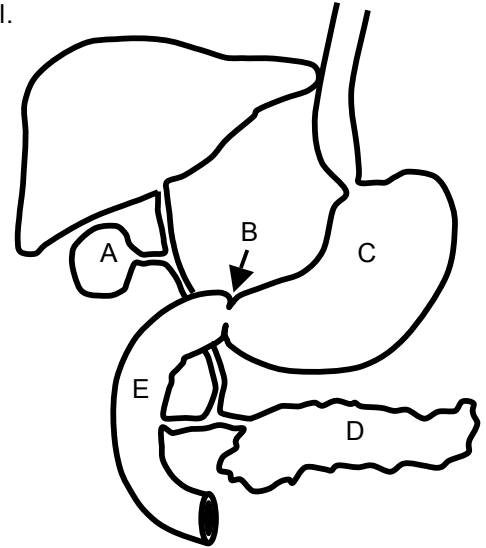
- A. thalamus
- B. spleen
- C. thymus
- D. tonsil
- E. bone marrow

7) Chambers or vessels that carry oxygenated blood include which of the following?

- A. 1 and 2 only
- B. 3 and 4 only
- C. 5 and 6 only
- D. 1, 4, and 5
- E. 2, 3, and 6

8) During systole in the heart

- A. the atrio-ventricular valves are open
- B. the aortic semi-lunar valve is open
- C. the pressure is highest in the vena cava
- D. the pressure is highest in the aorta
- E. all of the above are correct



Name _____

Section # _____

9. In quiet thoracic breathing, exhalation is the result of
- A. contracting bronchi
 - B. contracting external intercostal muscles
 - C. contracting of abdominal muscles
 - D. relaxation of the diaphragm
 - E. swallowing
10. Which of the following in a human is most similar in function to the gill lamellae of a fish?
- A. alveoli
 - B. trachea
 - C. bronchioles
 - D. vocal cords
 - E. diaphragm
11. In the blood, bicarbonate ions
- A. are transported by hemoglobin.
 - B. attach to numerous carbon dioxide molecules, keeping them in solution.
 - C. are poisonous and must constantly be removed.
 - D. help transport oxygen.
 - E. act as buffers to guard against pH changes.
- 12) Virally infected cells are lysed by the
- A. suppressor cells
 - B. cytotoxic cells
 - C. mediator cells
 - D. inducer cells
 - E. helper cells
- 13) Which of the following cells might be responsible for the increased blood flow associated with an inflammatory response?
- A. basophils
 - B. eosinophils
 - C. platelets
 - D. neutrophils
 - E. monocytes
- 14) A biology 1A student sprained her ankle on the way to class. She went to the Tang Center and the doctor is concerned about the potential for excessive swelling. Which treatment(s) would the doctor recommend?
- A. Apply warm towels to increase blood flow to the site.
 - B. Apply cold towels to decrease blood flow to the site.
 - C. Injections of elastin to allow increased ankle flexibility.
 - D. Take aspirin to counteract the effect of prostaglandin.
 - E. Both B and D.