

Name _____

Section # _____

Quiz B. Each question is worth 2 pts unless indicated otherwise.

1 A, 2 E, 3 B, 4 C, 5 D, 6 C, 7 E, 8 B, 9 E, 10 C, 11 B, 12 A or B, 13 E, 14 B.

The following questions refer to the diagram. Each question is worth 1 point. Bubble in the correct answer on your scantron. Answers may be used more than once, or not at all.

1) It synthesizes bile. _____

2) It secretes enterokinase (enteropeptidase). _____

3) Where is the pyloric sphincter? _____

4) Pepsinogen is converted into the active form pepsin by

- A. prothrombin
- B. ATP
- C. low pH
- D. trypsin
- E. the presence of water

5) We can find epithelial cells in all of the following except

- A. esophagus
- B. trachea
- C. alveolus
- D. intestinal smooth muscle
- E. liver

6) Which of the following fibers are responsible for the resistant property of tendons?

- A. elastin fibers
- B. fibrin fibers
- C. collagenous fibers
- D. reticular fibers
- E. spindle fibers

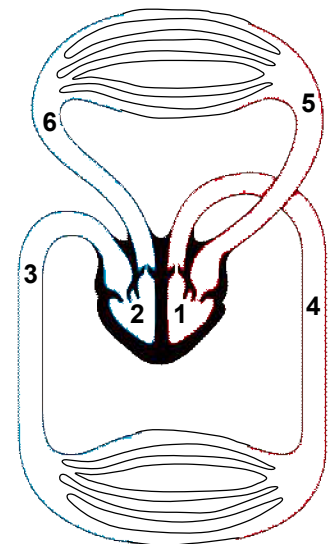
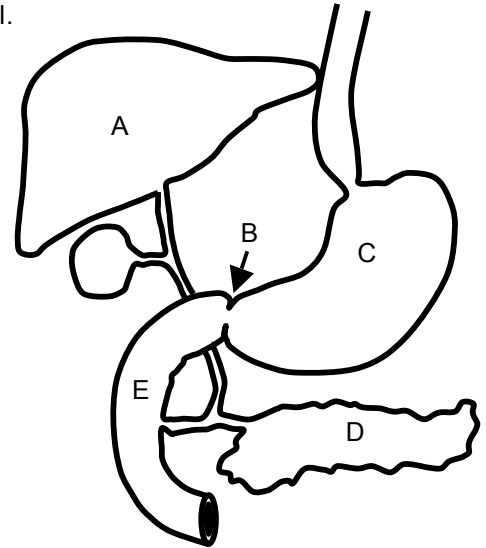
7) Use the diagram at the right to answer the following question.

Blood is carried directly to the lungs from which of the following?

- A. 2
- B. 3
- C. 4
- D. 5
- E. 6

8) The cardiac pacemaker is called the:

- A. vestibular node
- B. sino-atrial node
- C. atrio-ventricular node
- D. pulmonary node
- E. sino-ventricular node



Name _____

Section # _____

- 9) Which of the following is(are) true about Fick's first law of diffusion?
- A. the rate of diffusion increases with greater area
 - B. diffusion occurs in milliseconds within cells less than 10 micrometers in diameter
 - C. the rate of diffusion increases with a larger diffusion coefficient
 - D. A and B are correct
 - E. A, B and C are correct
- 10) Identify a correct statement about breathing:
- A. During exhalation In humans, a negative pressure is generated.
 - B. In mammals, the rib cage expands as rib muscles and diaphragm relax.
 - C. In birds, gas flows one way through parabronchi in the lungs.
 - D. In mammals, a pacemaker in the heart sets up breathing rhythm in response to concentration of CO₂ in the blood.
 - E. The gills of fish are equivalent to the trachea of mammals
- 11) In mammals, low-Oxygen blood is carried directly from the systemic capillaries to the:
- A. left atrium
 - B. right atrium
 - C. left ventricle
 - D. right ventricle
 - E. aorta
- 12) The cells of the specific immune system are generally grouped into
- A. T cells, B cells, Lymphocytes
 - B. T cells, B cells, macrophages
 - C. phagocytes and hematopoietic stem cells
 - D. leukocytes and erythrocytes
 - E. T cells, B cells and reticulocytes
- 13) Which of the following phagocytic cells can phagocytose bacteria repeatedly
- A. basophils
 - B. eosinophils
 - C. platelets
 - D. neutrophils
 - E. macrophages
- 14) Smoking partially inactivates cilia, in particular those lining the trachea. Which of the following immune responses would be most affected?
- A. macrophages could not move
 - B. mucus secretions would not be as readily cleared
 - C. ciliated parasites would embed in the epithelial lining
 - D. chemotaxis of monocytes and neutrophils would be affected
 - E. excessive dryness of the trachea would lead to irritations